

Health & Care Information Model:

nl.zorg.Payer-v4.1

Status: Final

Release: 2024

Release status: Published

Managed by:



Content

1. nl.zorg.Payer-v4.1	3
1.1 Revision History.....	3
1.2 Concept	4
1.3 Mindmap	4
1.4 Purpose.....	4
1.5 Patient Population	4
1.6 Evidence Base	4
1.7 Information Model	4
1.8 Example Instances.....	8
1.9 Instructions.....	9
1.10 Interpretation	9
1.11 Care Process	9
1.12 Example of the Instrument	9
1.13 Constraints.....	9
1.14 Issues	9
1.15 References	9
1.16 Functional Model	9
1.17 Traceability to other Standards.....	10
1.18 Disclaimer	10
1.19 Terms of Use	10
1.20 Copyrights.....	10

1. nl.zorg.Payer-v4.1

DCM::CoderList	Kerngroep Registratie aan de Bron
DCM::ContactInformation.Address	*
DCM::ContactInformation.Name	*
DCM::ContactInformation.Telecom	*
DCM::ContentAuthorList	Projectgroep Generieke Overdrachtsgegevens & Kerngroep Registratie aan de Bron
DCM::CreationDate	23-11-2012
DCM::DeprecatedDate	
DCM::DescriptionLanguage	nl
DCM::EndorsingAuthority.Address	
DCM::EndorsingAuthority.Name	PM
DCM::EndorsingAuthority.Telecom	
DCM::Id	2.16.840.1.113883.2.4.3.11.60.40.3.1.1
DCM::KeywordList	Verzekeringsgegevens
DCM::LifecycleStatus	Final
DCM::ModelerList	Kerngroep Registratie aan de Bron
DCM::Name	nl.zorg.Betaler
DCM::PublicationDate	24-04-2024
DCM::PublicationStatus	Published
DCM::ReviewerList	Projectgroep Generieke Overdrachtsgegevens & Kerngroep Registratie aan de Bron
DCM::RevisionDate	24-04-2024
DCM::Supersedes	nl.zorg.Betaler-v4.0
DCM::Version	4.1
HCIM::PublicationLanguage	EN

1.1 Revision History

Publicatieversie 1.0 (15-02-2013)

-

Publicatieversie 1.1 (01-07-2013)

Bevat: ZIB-59.

Publicatieversie 1.2 (01-04-2015)

Bevat: ZIB-72, ZIB-216, ZIB-217, ZIB-306, ZIB-308, ZIB-314, ZIB-357.

Incl. algemene wijzigingsverzoeken:

ZIB-94, ZIB-154, ZIB-200, ZIB-201, ZIB-309, ZIB-324, ZIB-326.

Publicatieversie 3.0 (01-05-2016)

Bevat: ZIB-453.

Publicatieversie 3.1 (04-09-2017)

Bevat: ZIB-429, ZIB-564, ZIB-575, ZIB-582, ZIB-583.

Publicatieversie 3.1.1 (01-09-2020)

Bevat: ZIB-1008.

Publicatieversie 3.2 (01-12-2021)

Bevat: ZIB-1196.

Publicatieversie 4.0 (15-10-2023)

Bevat: ZIB-1739, ZIB-1834.

1.2 Concept

Payers are organizations or individuals that pay for the healthcare supplied to the patient. These organizations or individuals can be: facilities or people who financially guarantee or who are responsible for the patient (such as parents or guardians of minors), organizations with direct financial responsibility, combinations of these or the patient themselves.

1.3 Mindmap

1.4 Purpose

Recording the information of the paying authorities and people serves to simplify payment of the fees for the supplied care and to provide insight in advance on how these fees are to be paid, especially when it comes to non-insured healthcare.

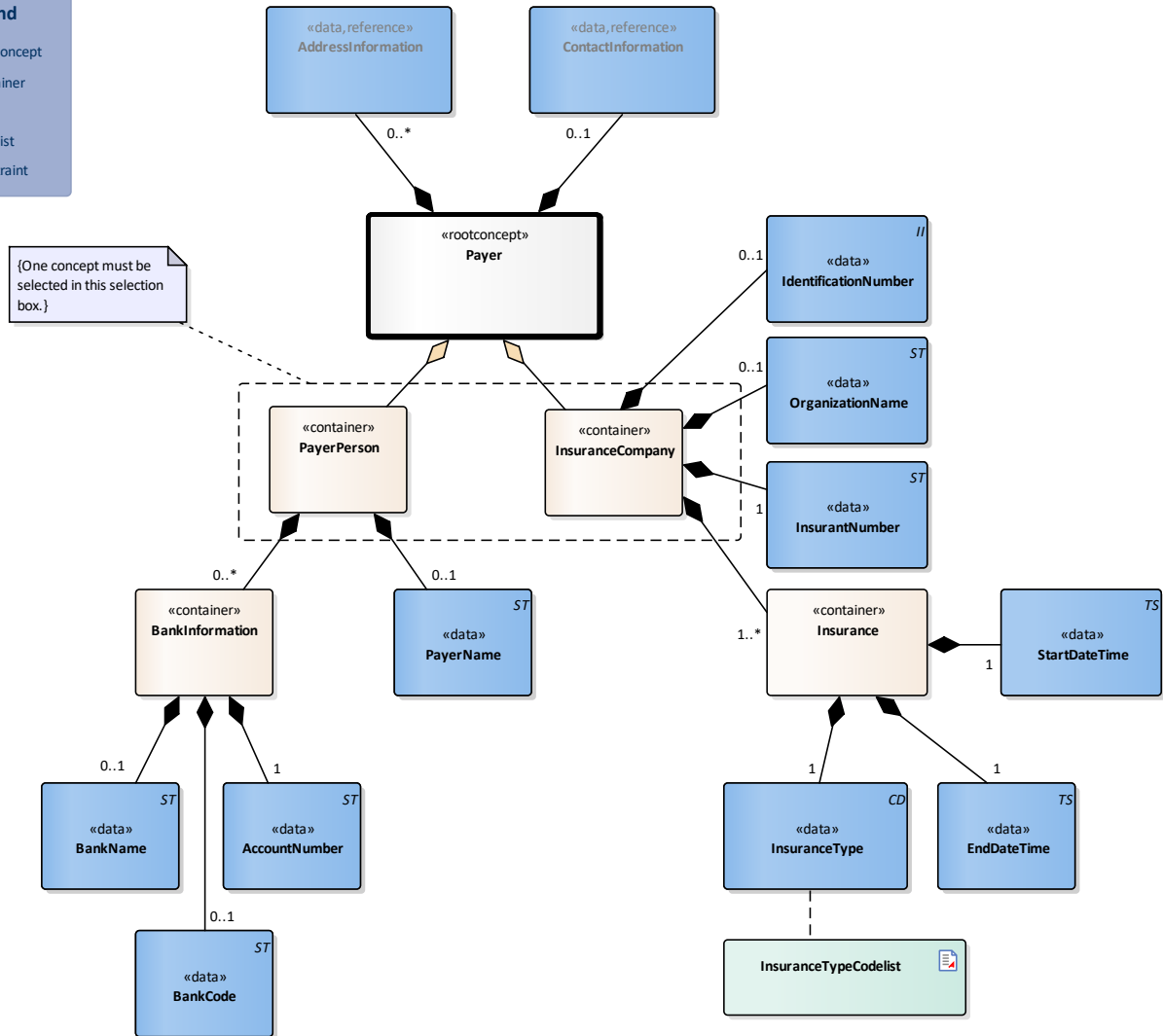
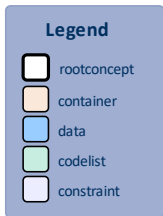
1.5 Patient Population

1.6 Evidence Base

Those that developed the model took into account the information exchanged in the 'Check for Right to Insurance (COV)'. To do so, the COV VZ801/802 message definitions were used, v4 (02-nov-2012).

The structure of the 'European Health Insurance Card (EHIC)' information was taken into account as well.

1.7 Information Model



«rootconcept»	Payer
Definitie	Root concept of the Payer information model. This root concept contains all data elements of the Payer information model.
Datatype	
DCM::ConceptId	NL-CM:1.1.1
Opties	

«container»	PayerPerson
Definitie	Container of the PayerPerson concept. This container contains all data elements of the PayerPerson concept. In this a person is a natural person or a juridical person, such as an organization, municipality, etc.
Datatype	
DCM::ConceptId	NL-CM:1.1.2
Opties	

«data»	PayerName
Definitie	Full name of the paying person or organization (legal entity).
Datatype	ST
DCM::ConceptId	NL-CM:1.1.5
Opties	

«container»	BankInformation
Definitie	Container of the BankInformation concept. This container contains all data

	elements of the BankInformation concept.	
Datatype		
DCM::ConceptId	NL-CM:1.1.4	
Opties		

«data»	BankName	
Definitie	Name of the financial organization.	
Datatype	ST	
DCM::ConceptId	NL-CM:1.1.9	
DCM::ExampleValue	ING	
Opties		

«data»	BankCode	
Definitie	Code indicating the bank and branch. For European countries, this is the organization's BIC or SWIFT code.	
Datatype	ST	
DCM::ConceptId	NL-CM:1.1.10	
DCM::ExampleValue	INGBNL2A	
Opties		

«data»	AccountNumber	
Definitie	The payer's bank account number at the listed organization. For European countries, this is the IBAN.	
Datatype	ST	
DCM::ConceptId	NL-CM:1.1.11	
DCM::ExampleValue	NL85INGB0001234567	
Opties		

«container»	InsuranceCompany	
Definitie	Container of the InsuranceCompany concept. This container contains all data elements of the InsuranceCompany concept.	
Datatype		
DCM::ConceptId	NL-CM:1.1.3	
Opties		

«container»	Insurance	
Definitie	Container of the Insurance concept. This container contains all data elements of the Insurance concept.	
Datatype		
DCM::ConceptId	NL-CM:1.1.8	
Opties		

«data»	StartDateTime	
Definitie	Date from which the insurance policy coverage applies.	
Datatype	TS	
DCM::ConceptId	NL-CM:1.1.13	
DCM::ExampleValue	01-01-2012	
Opties		

«data»	EndDateTime	
Definitie	Date until which the insurance policy coverage applies. This item maps the 'Expiry date' on EHC field 9.	
Datatype	TS	
DCM::ConceptId	NL-CM:1.1.14	

DCM::ExampleValue	31-01-2013	
Opties		

«data»	InsuranceType	
Definitie	Type of insurance policy. Codes as returned in the Check for Right to Insurance	
Datatype	CD	
DCM::ConceptId	NL-CM:1.1.15	
DCM::ExampleValue	Basis verzekerd	
DCM::ValueSet	InsuranceTypeCodelist	OID: 2.16.840.1.113883.2.4.3.11.60.40.2.1.1.1
Opties		

«data»	IdentificationNumber	
Definitie	Unique healthcare insurance company identification (the UZOVI number).	
Datatype	II	
DCM::AssigningAuthority	UZOVI	OID: 2.16.840.1.113883.2.4.6.4
DCM::ConceptId	NL-CM:1.1.7	
DCM::ExampleValue	3312	
Opties		

«data»	OrganizationName	
Definitie	Full, official name of the healthcare insurance company. If the UZOVI number is entered as an identification number, this will be the name as listed in the UZOVI register and the name which is returned in the Check for Right to Insurance (COV).	
Datatype	ST	
DCM::ConceptId	NL-CM:1.1.16	
DCM::ExampleValue	MijnZorgverzekering N.V.	
Opties		

«data»	InsurantNumber	
Definitie	Number under which the insured person is registered at the insurance company This item maps the <i>'identification number of the card'</i> on EHC field 8	
Datatype	ST	
DCM::ConceptId	NL-CM:1.1.6	
DCM::ExampleValue	992298765	
Opties		

«data»	AddressInformation	
Definitie	The payer's address information.	
Datatype		
DCM::ConceptId	NL-CM:1.1.17	
DCM::ReferencedConceptId	NL-CM:20.5.1	This is a reference to the rootconcept of the partial information model AdresInformation.
Opties		

«data»	ContactInformation	
Definitie	The payer's telephone number and/or e-mail address.	
Datatype		
DCM::ConceptId	NL-CM:1.1.12	

DCM::ReferencedConceptId	NL-CM:20.6.1	This is a reference to the rootconcept of the partial information model ContactInformation
Opties		

«document»		InsuranceTypeCodelist	
Definitie			
Datatype			
DCM::ValueSetBinding	Required		
DCM::ValueSetId	2.16.840.1.113883.2.4.3.11.6 0.40.2.1.1.1		
DCM::ValueSetIncludeOTH	True		
DCM::ValueSetStatus	Active		
HCIM::ValueSetLanguage	NL		
Opties			

VerzekeringsoortCodelijst			OID: 2.16.840.1.113883.2.4.3.11.60.40.2.1.1.1	
Concept Name	Concept Code	Coding Syst. Name	Coding System OID	Description
Basis	B	Verzekeringsoort	2.16.840.1.113883.2.4.3.11.60.101.5.1	Basis verzekerd
Aanvullend verzekerd	A	Verzekeringsoort	2.16.840.1.113883.2.4.3.11.60.101.5.1	Aanvullend verzekerd
Basisverzekering vanuit AWBZ	BZ	Verzekeringsoort	2.16.840.1.113883.2.4.3.11.60.101.5.1	Basisverzekering vanuit AWBZ (tegenwoordig uit Wet Langdurige Zorg)
Hoofdverzekering	H	Verzekeringsoort	2.16.840.1.113883.2.4.3.11.60.101.5.1	Een basisverzekering die geen onderdeel uitmaakt van de ZVW of AWBZ (bijvoorbeeld voor expats in het buitenland).
Tandverzekering (los)	T	Verzekeringsoort	2.16.840.1.113883.2.4.3.11.60.101.5.1	Tandverzekering
Aanvullend + tand	AT	Verzekeringsoort	2.16.840.1.113883.2.4.3.11.60.101.5.1	Aanvullend + tand

Legend	
Definitie	
Datatype	
Opties	

Constraint	
Definitie	One concept must be selected in this selection box.
Datatype	
Opties	

1.8 Example Instances

Verzekeraar	
IdentificatieNummer	3332
OrganisatieNaam	Menzis Zorgverzekeraar N.V.
VerzekerdeNummer	12345678
Verzekering	
BeginDatumTijd	01-01-2012
EindDatumTijd	31-01-2013
VerzekeringsSoort	Basis verzekerd
Adres	
Straat	Postbus
Huisnummer	34000
Postcode	7500 KC
Woonplaats	Enschede
Land	Nederland
TelefoonEmail	
Telefoonnummer	+31505233333
NummerSoort	Zakelijk telefoonnummer

BetalersPersoon	
BetalersNaam	J.P.M. van Putten
Bankgegevens	
BankNaam	ING
Bankcode	INGBNL2A
Rekeningnummer	NL98INGB0003856625
Adres	
Straat	1e Jacob van Campenstr
Huisnummer	15
Postcode	1012 NX
Woonplaats	Hoogmade
Gemeente	Kaag en Braassem
Land	Nederland
AdresSoort	Woon-/verblijfadres
TelefoonEmail	
Telefoonnummer	+311725233111
NummerSoort	Privé telefoonnummer

1.9 Instructions

1.10 Interpretation

1.11 Care Process

1.12 Example of the Instrument

1.13 Constraints

1.14 Issues

1.15 References

1.16 Functional Model

1.17 Traceability to other Standards

1.18 Disclaimer

The Health and Care Information Models (a.k.a Clinical Building Block) has been made in collaboration with several different parties in healthcare. These parties asked Nictiz to manage good maintenance and development of the information models. Hereafter, these parties and Nictiz are referred to as the collaborating parties. The collaborating parties paid utmost attention to the reliability and topicality of the data in these Health and Care Information Models. Omissions and inaccuracies may however occur. The collaborating parties are not liable for any damages resulting from omissions or inaccuracies in the information provided, nor are they liable for damages resulting from problems caused by or inherent to distributing information on the internet, such as malfunctions, interruptions, errors or delays in information or services provide by the parties to you or by you to the parties via a website or via e-mail, or any other digital means. The collaborating parties will also not accept liability for any damages resulting from the use of data, advice or ideas provided by or on behalf of the parties by means of the Health and Care Information Models. The parties will not accept any liability for the content of information in this Health and Care Information Model to which or from which a hyperlink is referred. In the event of contradictions in mentioned Health and Care Information Model documents and files, the most recent and highest version of the listed order in the revisions will indicate the priority of the documents in question. If information included in the digital version of a Health and Care Information Model is also distributed in writing, the written version will be leading in case of textual differences. This will apply if both have the same version number and date. A definitive version has priority over a draft version. A revised version has priority over previous versions.

1.19 Terms of Use

The user may use the Health and Care Information Models without limitations. The copyright provisions in the paragraph concerned apply to copying, distributing and passing on the Health and Care Information Models.

1.20 Copyrights

A Health and Care Information Model qualifies as a work within the meaning of Section 10 of the Copyright Act (Auteurswet). Copyrights protect the Health and Care Information Models and these rights are owned by the cooperating parties.

The user may copy, distribute and pass on the information in this Health and Care Information Model under the conditions that apply for Creative Commons license Attribution-NonCommercial-ShareAlike 3.0 Netherlands (CC BY-NC-SA-3.0).

The content is available under Creative Commons Attribution-NonCommercial-ShareAlike 3.0 (see also <http://creativecommons.org/licenses/by-nc-sa/3.0/nl/>)

This does not apply to information from third parties that sometimes is used and / or referred to in a Health and Care Information Model, for example to an international medical terminology system. Any (copyright) rights that protect this information are not owned by the cooperating parties but by those third parties.

Nictiz is the independent national competence centre for electronic exchange of health and care information. The activities of Nictiz include the targeted development and management of information standards at the request of and in partnership with the stakeholders in healthcare. Nictiz advises these parties on all aspects of information exchange and identifies (future) national and international developments.

Nictiz

P.O. Box 19121
2500 CC Den Haag
Oude Middenweg 55
2491 AC Den Haag

070-3173450
info@nictiz.nl
www.nictiz.nl

