

# Health&Care Information Model: nl.zorg.SondeSysteem

Final

Managed by:

Better healthcare  
through better IT



# Content

<b>1. nl.zorg.SondeSysteem-v3.0</b> .....	<b>3</b>
1.1 Revision History.....	3
1.2 Concept .....	3
1.3 Mindmap .....	3
1.4 Purpose.....	4
1.5 Patient Population .....	4
1.6 Evidence Base .....	4
1.7 Information Model .....	4
1.8 Example Instances.....	7
1.9 Instructions.....	7
1.10 Interpretation .....	7
1.11 Care Process .....	7
1.12 Example of the Instrument .....	7
1.13 Constraints.....	8
1.14 Issues .....	8
1.15 References .....	8
1.16 Functional Model .....	8
1.17 Traceability to other Standards.....	8
1.18 Disclaimer .....	8
1.19 Terms of Use .....	8
1.20 Copyrights .....	9

# 1. nl.zorg.SondeSysteem-v3.0

DCM::CoderList	Werkgroep RadB Verpleegkundige Gegevens
DCM::ContactInformation.Address	*
DCM::ContactInformation.Name	*
DCM::ContactInformation.Telecom	*
DCM::ContentAuthorList	Werkgroep RadB Verpleegkundige Gegevens
DCM::CreationDate	3-4-2014
DCM::DeprecatedDate	
DCM::DescriptionLanguage	nl
DCM::EndorsingAuthority.Address	
DCM::EndorsingAuthority.Name	PM
DCM::EndorsingAuthority.Telecom	
DCM::Id	2.16.840.1.113883.2.4.3.11.60.40.3.10.3
DCM::KeywordList	Sonde, feeding tube, toedieningssysteem
DCM::LifecycleStatus	Final
DCM::ModelerList	Werkgroep RadB Verpleegkundige Gegevens
DCM::Name	nl.zorg.SondeSysteem
DCM::PublicationDate	1-5-2016
DCM::PublicationStatus	Published
DCM::ReviewerList	Projectgroep RadB Verpleegkundige Gegevens & Kerngroep Registratie aan de Bron
DCM::RevisionDate	8-9-2015
DCM::Superseeds	nl.nfu.SondeSysteem-v1.0
DCM::Version	3.0

## 1.1 Revision History

Publicatieversie 1.0 (01-07-2015)

Publicatieversie 3.0 (01-05-2016)

Bevat: ZIB-453

## 1.2 Concept

A feeding tube is a special catheter used to:

- administer liquid food to people who are incapable of oral intake of food or liquid,
- administer medication,
- drain (siphon) or pump out gastric juice.

There are different ways to place a feeding tube. A feeding tube can be inserted through the nose, in the stomach or in the intestines (duodenum, jejunum).

Percutaneous endoscopic gastrostomy (PEG) is a technique in which a feeding tube is placed into the stomach through the abdominal wall. This thin tube (PEG tube) is used to feed a patient who is incapable of oral food intake for a prolonged period of time.

## 1.3 Mindmap

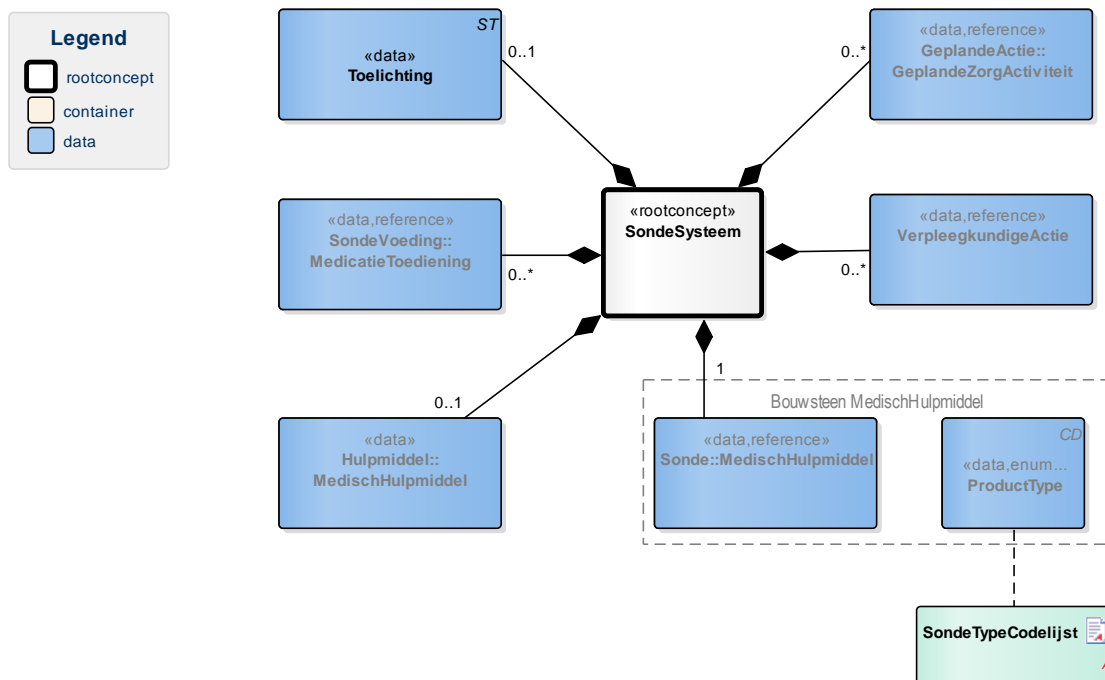
## 1.4 Purpose

The purpose of a feeding tube is usually to administer food and/or medication. Information on present feeding tubes is recorded to inform other healthcare providers. This information is of importance in determining the care required for the patient and in safely administering medication. In a transfer situation, the information offers the option to realize continuity of care by organizing specific expertise and materials in advance, for example.

## 1.5 Patient Population

## 1.6 Evidence Base

## 1.7 Information Model



«rootconcept»	SondeSystem	
Alias	EN: FeedingTubeSystem	
Definition	Root concept of the FeedingTubeSystem building block. This root concept contains all data elements of the FeedingTubeSystem building block.	
Datatype		
DCM::DefinitionCode	NL-CM:10.3.1	
Options		

«data»		Sonde::MedischHulpmiddel	
Alias	EN: FeedingTube::MedicalAid		
Definition	FeedingTube describes the presence of a feeding tube. If this is the case, the date of placement and insertion location can be described in addition to the type of feeding tube. Furthermore, it offers the option to record identification information of the feeding tube if desired.		
Datatype			
DCM::DefinitionCode	SNOMED CT: 25062003	Feeding tube	
DCM::DefinitionCode	NL-CM:10.3.2		
DCM::ReferencedDefinitionCode	NL-CM:10.1.1	This is a reference to concept MedischHulpmiddel in information model MedischHulpmiddel.	
Options			

«data»		ProductType	
Alias	EN: ProductType		
Definition	A description of the type of feeding tube based on the location where it was inserted and the position of the tip of the tube.		
Datatype	CD		
DCM::DefinitionCode	NL-CM:10.1.3		
DCM::ValueSet	SondeTypeCodelijst	OID: 2.16.840.1.113883.2.4.3.11.60.40.2.10.3.1	
Options			

«data»		SondeVoeding::MedicatieToediening	
Alias	EN: EnteralNutrition::MedicationAdministration		
Definition	The description of the fluid administered through the feeding tube and the dose administered, as given in the medication prescription. Though most cases involve food being administered through the feeding tube, medication is often administered through these tubes as well.		
Datatype			
DCM::DefinitionCode	NL-CM:10.3.3		
DCM::DefinitionCode	SNOMED CT: 225748000	Artificial feed	
DCM::ExampleValue	Nutrison		
DCM::ReferencedDefinitionCode	NL-CM:9.3.1	This is a reference to concept MedicatieToediening in information model MedicatieToediening.	
Options			

«data»		Hulpmiddel::MedischHulpmiddel	
Alias	EN: MedicalAid:MedicalAid		
Definition	A description of aids required to use the feeding tube, such as an enteral feeding pump or a vacuum pump in the event of draining fluid.		
Datatype			
DCM::DefinitionCode	NL-CM:10.3.7		
DCM::ReferencedDefinitionCode	NL-CM:10.1.1	This is a reference to concept MedischHulpmiddel in information model MedischHulpmiddel.	
Options			

«data» VerpleegkundigeActie	
Alias	EN: NursingProcedure
Definition	The required nursing procedures and/or points for attention involved in placement, use and removal of the feeding tube.
Datatype	
DCM::DefinitionCode	NL-CM:10.3.4
DCM::ReferencedDefinitionCode	NL-CM:14.2.9 This is a reference to concept VerpleegkundigeActie in information model VerpleegkundigeInterventie.
Options	

«data» GeplandeActie::GeplandeZorgActiviteit	
Alias	EN: PlannedProcedure::PlannedCareActivity
Definition	A planned (nursing) procedure or 'clinical reminder' relating to administering the feeding tube. This can be used to record information such as the date on which the feeding tube must be replaced.
Datatype	
DCM::DefinitionCode	NL-CM:10.3.5
DCM::ReferencedDefinitionCode	NL-CM:16.1.1 This is a reference to concept GeplandeZorgActiviteit in information model OverdrachtGeplandeZorgActiviteit.
Options	

«data» Toelichting	
Alias	EN: Explanation
Definition	An explanation of the feeding tube.
Datatype	ST
DCM::DefinitionCode	LOINC: 48767-8 Annotation comment
DCM::DefinitionCode	NL-CM:10.3.6
Options	

«document» SondeTypeCodelijst	
Alias	
Definition	
Datatype	
Options	

SondeTypeCodelijst			OID: 2.16.840.1.113883.2.4.3.11.60.40.2.10.3.1	
Concept Name	Concept Code	Coding Syst. Name	Coding System OID	Description
Jejunostomy tube	126065006	SNOMED CT	2.16.840.1.113883.6.96	Jejunostomie katheter
Gastrostomy tube	470571004	SNOMED CT	2.16.840.1.113883.6.96	Gastrostomie katheter
Percutaneous endoscopic gastrostomy catheter	281414004	SNOMED CT	2.16.840.1.113883.6.96	PEG sonde
Percutaneous radiological	8921000146109	SNOMED CT	2.16.840.1.113883.6.96	PRG sonde

gastrostomy catheter				
Percutaneous endoscopic gastrojejunostomy catheter	8851000146109	SNOMED CT	2.16.840.1.113883.6.96	PEG-J sonde
Percutaneous endoscopic jejunostomy catheter	8911000146104	SNOMED CT	2.16.840.1.113883.6.96	PEJ sonde
Nasogastric tube	17102003	SNOMED CT	2.16.840.1.113883.6.96	Neus-maagsonde
Nasojejunal tube	8581000146101	SNOMED CT	2.16.840.1.113883.6.96	Neus-jejunumsonde
Nasoduodenal tube	8591000146104	SNOMED CT	2.16.840.1.113883.6.96	Neus-duodenumsonde
Other	OTH	NullFlavor	2.16.840.1.113883.5.1008	Anders

## 1.8 Example Instances

<b>SondeSysteem</b>	
<b>Sonde</b>	
ProductType	PEG sonde
BeginDatum	30-11-2014
<b>SondeVoeding</b>	
ProductNaam	Nutrison
<b>VerpleegkundigeActie</b>	
Activiteit	Sonde naspoelen met water na sondevoeding.
<b>GeplandeActie</b>	
Activiteit	Sonde verwisselen op 5-12-2014.

## 1.9 Instructions

### 1.10 Interpretation

### 1.11 Care Process

### 1.12 Example of the Instrument

## 1.13 Constraints

## 1.14 Issues

## 1.15 References

1. V&VN. *Landelijke multidisciplinaire richtlijn Neusmaagsonde*. (2011) [Online] Beschikbaar op: <http://www.stuurgroepdervoeding.nl/wp-content/uploads/2015/02/Richtlijn-Neusmaagsonde-definitief.pdf> [Geraadpleegd: 13 februari 2015]

## 1.16 Functional Model

## 1.17 Traceability to other Standards

## 1.18 Disclaimer

This Clinical Building Block has been made in collaboration with several different parties in healthcare. These parties asked Nictiz to manage good maintenance and development of the information models. Hereafter, these parties and Nictiz are referred to as the collaborating parties. The collaborating parties paid utmost attention to the reliability and topicality of the data in these Health and Care Information Model (a.k.a Clinical Building Block)s. Omissions and inaccuracies may however occur. The collaborating parties are not liable for any damages resulting from omissions or inaccuracies in the information provided, nor are they liable for damages resulting from problems caused by or inherent to distributing information on the internet, such as malfunctions, interruptions, errors or delays in information or services provide by the parties to you or by you to the parties via a website or via e-mail, or any other digital means. The collaborating parties will also not accept liability for any damages resulting from the use of data, advice or ideas provided by or on behalf of the parties by means of this Clinical Building Block. The parties will not accept any liability for the content of information in this Clinical Building Block to which or from which a hyperlink is referred. In the event of contradictions in mentioned Clinical Building Block documents and files, the most recent and highest version of the listed order in the revisions will indicate the priority of the documents in question. If information included in the digital version of this Clinical Building Block is also distributed in writing, the written version will be leading in case of textual differences. This will apply if both have the same version number and date. A definitive version has priority over a draft version. A revised version has priority over previous versions.

## 1.19 Terms of Use

The user may use the information in this Clinical Building Block without limitations. The copyright provisions in the paragraph concerned apply to copying, distributing and passing on information from this Clinical



Building Block.

## **1.20 Copyrights**

The user may copy, distribute and pass on the information in this Clinical Building Block under the conditions that apply for Creative Commons license Attribution-NonCommercial-ShareAlike 3.0 Netherlands (CC BY-NC-SA-3.0). The content is available under Creative Commons Attribution-NonCommercial-ShareAlike 3.0 (see also <http://creativecommons.org/licenses/by-nc-sa/3.0/nl/>)