

# Health&Care Information Model: nl.zorg.Ondervoeding

Final

Managed by:

Better healthcare  
through better IT



# Content

<b>1. nl.zorg.Ondervoeding-v3.0</b> .....	<b>3</b>
1.1 Revision History.....	3
1.2 Concept .....	3
1.3 Mindmap .....	3
1.4 Purpose.....	4
1.5 Patient Population .....	4
1.6 Evidence Base .....	4
1.7 Information Model .....	4
1.8 Example Instances.....	6
1.9 Instructions.....	6
1.10 Interpretation .....	6
1.11 Care Process .....	6
1.12 Example of the Instrument .....	6
1.13 Constraints.....	7
1.14 Issues .....	7
1.15 References .....	7
1.16 Functional Model .....	7
1.17 Traceability to other Standards.....	7
1.18 Disclaimer .....	7
1.19 Terms of Use .....	7
1.20 Copyrights .....	8

# 1. nl.zorg.Ondervoeding-v3.0

DCM::CoderList	Werkgroep RadB Verpleegkundige Gegevens
DCM::ContactInformation.Address	*
DCM::ContactInformation.Name	*
DCM::ContactInformation.Telecom	*
DCM::ContentAuthorList	Werkgroep RadB Verpleegkundige Gegevens
DCM::CreationDate	12-2-2014
DCM::DeprecatedDate	
DCM::DescriptionLanguage	nl
DCM::EndorsingAuthority.Address	
DCM::EndorsingAuthority.Name	PM
DCM::EndorsingAuthority.Telecom	
DCM::Id	2.16.840.1.113883.2.4.3.11.60.40.3.4.4
DCM::KeywordList	Ondervoeding, MUST score, SNAQ score
DCM::LifecycleStatus	Final
DCM::ModelerList	Werkgroep RadB Verpleegkundige Gegevens
DCM::Name	nl.zorg.Ondervoeding
DCM::PublicationDate	1-5-2016
DCM::PublicationStatus	Published
DCM::ReviewerList	Projectgroep RadB Verpleegkundige Gegevens & Kerngroep Registratie aan de Bron
DCM::RevisionDate	8-9-2015
DCM::Superseeds	nl.nfu.Ondervoeding-v1.0
DCM::Version	3.0

## 1.1 Revision History

Publicatieversie 1.0 (01-07-2015)

Publicatieversie 3.0 (01-05-2016)

Bevat: ZIB-453

## 1.2 Concept

Malnutrition is a nutritional condition in which the patient has an imbalance of energy, protein and other nutrients leading to measurable negative effects on the body's composition and functioning. This is largely caused by a clinically relevant reduction in muscle mass. Ill and vulnerable elderly people are particularly prone to malnutrition. Aids in determining (the risk of) malnutrition are validated screening tools such as the MUST and SNAQ questionnaire.

(Source: NHG, National Primary Care Collaboration Agreement on Malnutrition)

## 1.3 Mindmap

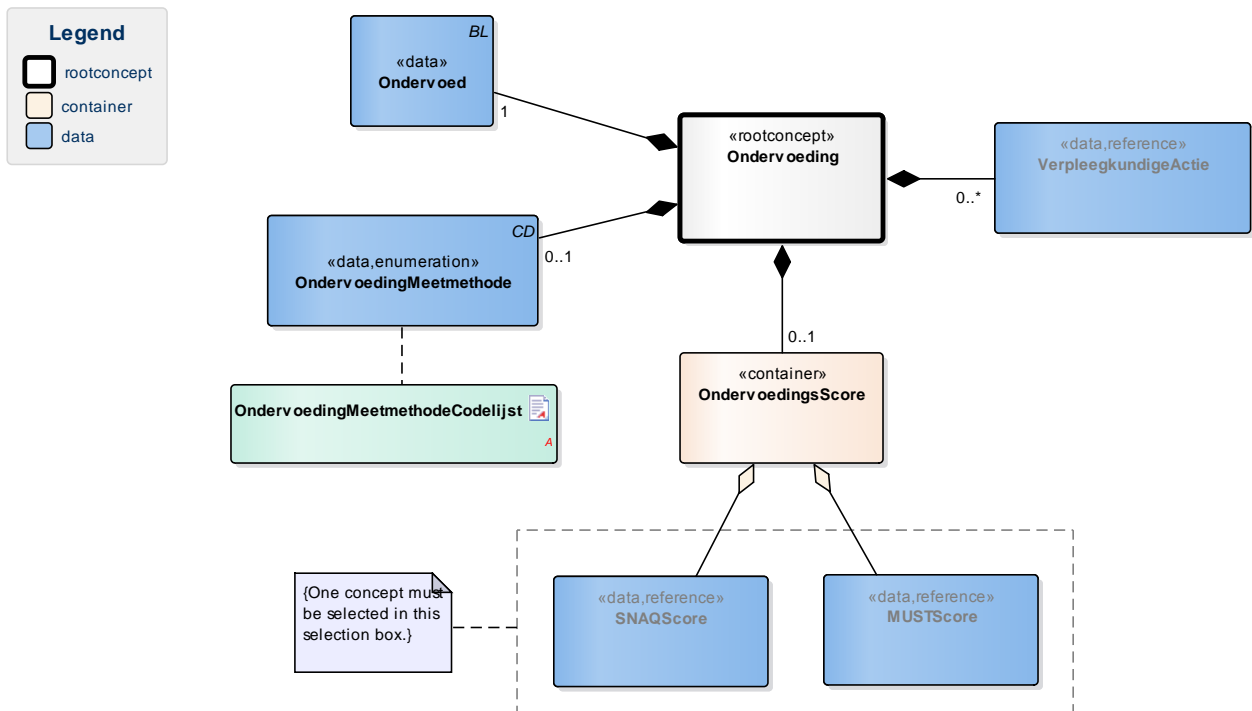
## 1.4 Purpose

Malnutrition can lead to a significantly slower recovery, complications in the event of illness and operations and above all, higher mortality. Insight into the extent of (or risk of) malnutrition can help prevent malnutrition or prevent the nutritional condition from getting worse.

## 1.5 Patient Population

## 1.6 Evidence Base

## 1.7 Information Model



«rootconcept»	Ondervoeding	
Alias	EN: Malnutrition	
Definition	Root concept of the Malnutrition building block. This root concept contains all data elements of the Malnutrition building block.	
Datatype		
DCM::DefinitionCode	NL-CM:4.4.1	
DCM::DefinitionCode	SNOMED CT: 2492009	
Options	Malnutrition	

«data»	Ondervoed	
Alias	EN: Malnourished	
Definition	An indication stating whether the patient is malnourished.	

<b>Datatype</b>	BL
<b>DCM::DefinitionCode</b>	NL-CM:4.4.2
<b>Options</b>	

<b>«data»</b>	<b>OndervoedingMeetmethode</b>	
<b>Alias</b>	EN: MalnutritionMeasuringMethod	
<b>Definition</b>	Description of which measuring method is used to determine the malnutrition score.	
<b>Datatype</b>	CD	
<b>DCM::DefinitionCode</b>	NL-CM:4.4.3	
<b>DCM::ExampleValue</b>	SNAQ	
<b>DCM::ValueSet</b>	OndervoedingMeetmethode Codelijst	OID: 2.16.840.1.113883.2.4.3.11.60.40.2.4.4.1
<b>Options</b>		

<b>«data»</b>	<b>VerpleegkundigeActie</b>	
<b>Alias</b>	EN: NursingProcedure	
<b>Definition</b>	The nursing procedures that are/are to be carried out to improve the nutritional condition.	
<b>Datatype</b>		
<b>DCM::DefinitionCode</b>	NL-CM:4.4.4	
<b>DCM::ExampleValue</b>	Stimuleren van eten	
<b>DCM::ReferencedDefinitionCode</b>	NL-CM:14.2.9	This is a reference to concept VerpleegkundigeActie in information model VerpleegkundigeInterventie.
<b>Options</b>		

<b>«container»</b>	<b>OndervoedingsScore</b>	
<b>Alias</b>	EN: MalnutritionScore	
<b>Definition</b>	Container of the MalnutritionScore concept. This container contains all data elements of the MalnutritionScore concept.	
<b>Datatype</b>		
<b>DCM::DefinitionCode</b>	NL-CM:4.4.5	
<b>Options</b>		

<b>«data»</b>	<b>SNAQScore</b>	
<b>Alias</b>	EN: SNAQScore	
<b>Definition</b>	The screening tool to determine the extent of malnutrition following the SNAQ method.	
<b>Datatype</b>		
<b>DCM::DefinitionCode</b>	NL-CM:4.4.6	
<b>DCM::ReferencedDefinitionCode</b>	NL-CM:4.6.1	This is a reference to concept SNAQScore in information model SNAQScore.
<b>Options</b>		

<b>«data»</b>	<b>MUSTScore</b>	
<b>Alias</b>	EN: MUSTScore	
<b>Definition</b>	The screening tool to determine the extent of malnutrition following the MUST method.	

<b>Datatype</b>		
<b>DCM::DefinitionCode</b>	NL-CM:4.4.7	
<b>DCM::ReferencedDefinitionCode</b>	NL-CM:4.5.1	This is a reference to concept MUSTScore in information model MUSTScore.
<b>Options</b>		

<b>«document»</b>	<b>OndervoedingMeetmethodeCodelijst</b>			
<b>Alias</b>				
<b>Definition</b>				
<b>Datatype</b>				
<b>Options</b>				
<b>OndervoedingMeetmethodeCodelijst</b>	<b>OID: 2.16.840.1.113883.2.4.3.11.60.40.2.4.4.1</b>			
<b>Concept Name</b>	<b>Concept Code</b>	<b>CodeSys. Name</b>	<b>CodeSystem OID</b>	<b>Description</b>
SNAQ	8881000146104	SNOMED CT	2.16.840.1.113883.6.96	SNAQ
MUST	414648004	SNOMED CT	2.16.840.1.113883.6.96	MUST

## 1.8 Example Instances

<b>Ondervoeding</b>	
Ondervoed	Ja
OndervoedingMeetmethode	SNAQ
<b>OndervoedingsScore</b>	
<b>SNAQScore</b>	
SnaqScoreDatumTijd	17-02-2014
TotaalScore	2
Toelichting	-
<b>VerpleegkundigeActie</b>	
Activiteit	Tussen de maaltijden extra drinkvoeding geven.

## 1.9 Instructions

### 1.10 Interpretation

### 1.11 Care Process

### 1.12 Example of the Instrument

## 1.13 Constraints

## 1.14 Issues

## 1.15 References

1. NHG *Landelijke Eerstelijns Samenwerkings Afspraak Ondervoeding* [Online] Beschikbaar op: [https://www.nhg.org/sites/default/files/content/nhg\\_org/uploads/ondervoeding.pdf](https://www.nhg.org/sites/default/files/content/nhg_org/uploads/ondervoeding.pdf) [Geraadpleegd: 13 februari 2015]

## 1.16 Functional Model

## 1.17 Traceability to other Standards

## 1.18 Disclaimer

This Clinical Building Block has been made in collaboration with several different parties in healthcare. These parties asked Nictiz to manage good maintenance and development of the information models. Hereafter, these parties and Nictiz are referred to as the collaborating parties. The collaborating parties paid utmost attention to the reliability and topicality of the data in these Health and Care Information Model (a.k.a Clinical Building Block)s. Omissions and inaccuracies may however occur. The collaborating parties are not liable for any damages resulting from omissions or inaccuracies in the information provided, nor are they liable for damages resulting from problems caused by or inherent to distributing information on the internet, such as malfunctions, interruptions, errors or delays in information or services provide by the parties to you or by you to the parties via a website or via e-mail, or any other digital means. The collaborating parties will also not accept liability for any damages resulting from the use of data, advice or ideas provided by or on behalf of the parties by means of this Clinical Building Block. The parties will not accept any liability for the content of information in this Clinical Building Block to which or from which a hyperlink is referred. In the event of contradictions in mentioned Clinical Building Block documents and files, the most recent and highest version of the listed order in the revisions will indicate the priority of the documents in question. If information included in the digital version of this Clinical Building Block is also distributed in writing, the written version will be leading in case of textual differences. This will apply if both have the same version number and date. A definitive version has priority over a draft version. A revised version has priority over previous versions.

## 1.19 Terms of Use

The user may use the information in this Clinical Building Block without limitations. The copyright provisions in the paragraph concerned apply to copying, distributing and passing on information from this Clinical Building Block.

## 1.20 Copyrights

The user may copy, distribute and pass on the information in this Clinical Building Block under the conditions that apply for Creative Commons license Attribution-NonCommercial-ShareAlike 3.0 Netherlands (CC BY-NC-SA-3.0). The content is available under Creative Commons Attribution-NonCommercial-ShareAlike 3.0 (see also <http://creativecommons.org/licenses/by-nc-sa/3.0/nl/>)