

# Health&Care Information Model: nl.zorg.BehandelAanwijzing

Final

Managed by:

Better healthcare  
through better IT



# Content

<b>1. nl.zorg.BehandelAanwijzing-v3.0</b> .....	<b>3</b>
1.1 Revision History.....	3
1.2 Concept .....	3
1.3 Mindmap .....	3
1.4 Purpose.....	3
1.5 Patient Population .....	4
1.6 Evidence Base .....	4
1.7 Information Model .....	4
1.8 Example Instances.....	8
1.9 Instructions.....	8
1.10 Interpretation .....	8
1.11 Care Process .....	9
1.12 Example of the Instrument .....	9
1.13 Constraints.....	9
1.14 Issues .....	9
1.15 References .....	9
1.16 Functional Model .....	9
1.17 Traceability to other Standards.....	9
1.18 Disclaimer .....	9
1.19 Terms of Use .....	9
1.20 Copyrights .....	10

# 1. nl.zorg.BehandelAanwijzing-v3.0

DCM::CoderList	Kerngroep Registratie aan de Bron
DCM::ContactInformation.Address	*
DCM::ContactInformation.Name	*
DCM::ContactInformation.Telecom	*
DCM::ContentAuthorList	Projectgroep Generieke Overdrachtsgegevens & Kerngroep Registratie aan de Bron
DCM::CreationDate	25-10-2012
DCM::DeprecatedDate	
DCM::DescriptionLanguage	nl
DCM::EndorsingAuthority.Address	
DCM::EndorsingAuthority.Name	PM
DCM::EndorsingAuthority.Telecom	
DCM::Id	2.16.840.1.113883.2.4.3.11.60.40.3.2.1
DCM::KeywordList	advance directives, behandel aanwijzing, wilsverklaring, behandelbeperking
DCM::LifecycleStatus	Final
DCM::ModelerList	Kerngroep Registratie aan de Bron
DCM::Name	nl.zorg.BehandelAanwijzing
DCM::PublicationDate	1-5-2016
DCM::PublicationStatus	Published
DCM::ReviewerList	Projectgroep Generieke Overdrachtsgegevens & Kerngroep Registratie aan de Bron
DCM::RevisionDate	22-5-2015
DCM::Superseeds	nl.nfu.BehandelAanwijzing-v1.0.1
DCM::Version	3.0

## 1.1 Revision History

### Publicatieversie 1.0 (01-04-2015)

Bevat: ZIB-82, ZIB-91, ZIB-133, ZIB-134, ZIB-213, ZIB-215, ZIB-308.

Incl. algemene wijzigingsverzoeken:

ZIB-94, ZIB-154, ZIB-200, ZIB-201, ZIB-309, ZIB-324, ZIB-326.

### Publicatieversie 1.0.1 (22-05-2015)

Bevat: ZIB-386.

### Publicatieversie 3.0 (01-05-2016)

Bevat: ZIB-453

## 1.2 Concept

A treatment instruction includes an agreed constraint in the treatment based on the oral or written living will of the patient.

## 1.3 Mindmap

## 1.4 Purpose

A good overview of treatment instructions based on the wishes of the patient or their authorized

representative on (un)desired treatments is important in a patient's care. A concise, orderly list is of particular importance in acute care situations. Due to the large variety of symptoms, the situation concerns not only a CPR setting, but also cases in which the patient's condition rapidly worsens as a result of existing symptoms.

A healthcare provider consulting this information can discuss these existing treatment instructions with the patient, the patient's family or the patient's authorized representative and possibly include the instructions in their policy.

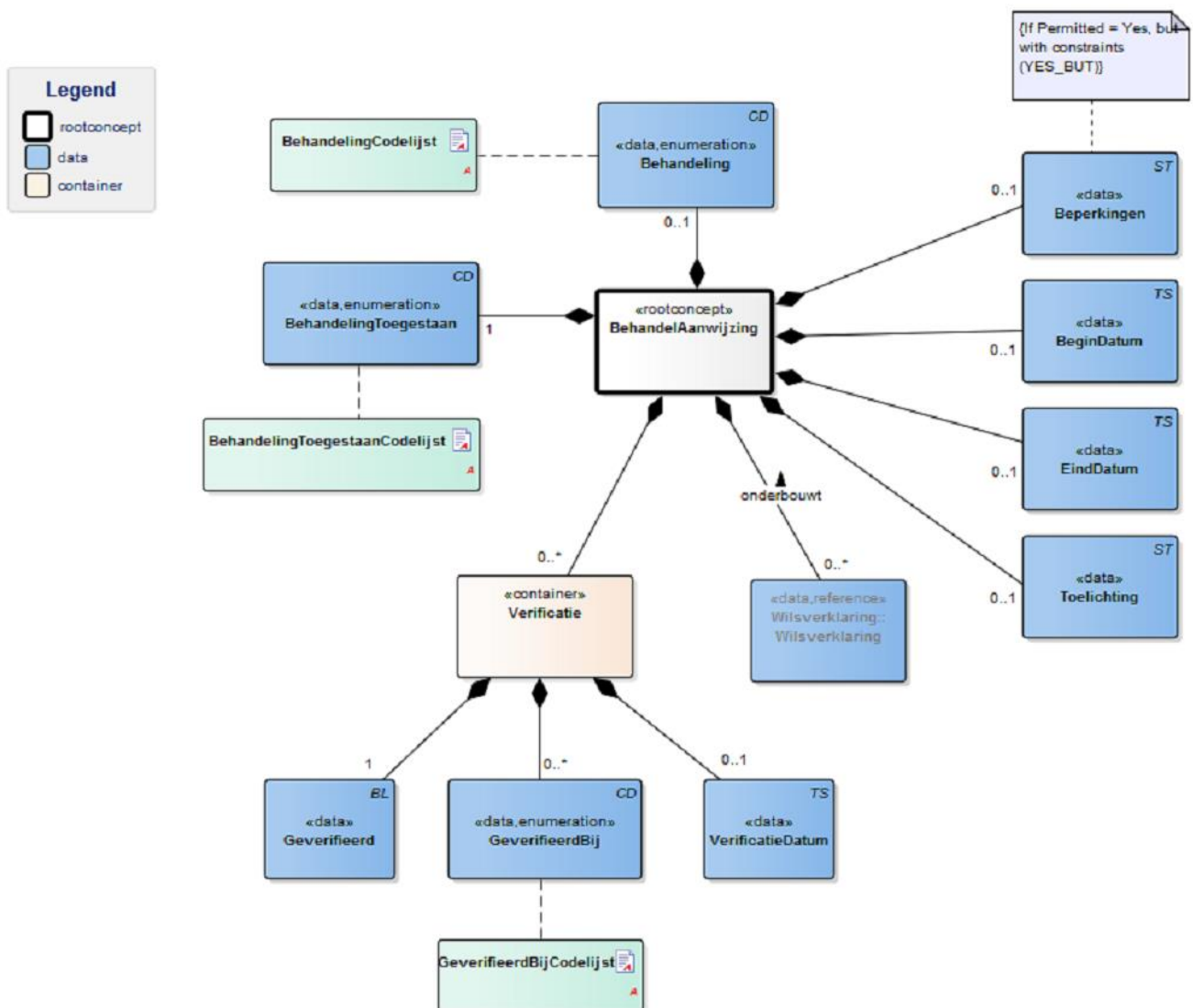
## 1.5 Patient Population

## 1.6 Evidence Base

Explanation for TreatmentCodeList:

In discussions on constraints in the therapeutic treatment of patients with a chronic neurological or respiratory condition, respiration is sometimes included as a separate restriction. The 'Respiration' item is to be seen separately from the decisions on CPR.

## 1.7 Information Model



«rootconcept»	BehandelAanwijzing	
Alias	EN: TreatmentInstruction	
Definition	Root concept of the TreatmentInstruction information model. This concept contains all data elements of the TreatmentInstruction information model.	
Datatype		
DCM::DefinitionCode	NL-CM:2.1.1	
Options		

«container»	Verificatie	
Alias	EN: Verification	
Definition	Container of the Verification concept. This container contains all data elements of the Verification concept.	
Datatype		
DCM::DefinitionCode	NL-CM:2.1.8	
Options		

«data»	Geverifieerd	
Alias	EN: Verified	
Definition	Indication of the fact that the treatment instruction has been verified with the patient, the patient's family and/or the patient's authorized representative.	
Datatype	BL	
DCM::DefinitionCode	NL-CM:2.1.9	
DCM::ExampleValue	Ja	
Options		

«data»	GeverifieerdBij	
Alias	EN: VerifiedWith	
Definition	The person with whom the treatment instruction was discussed and verified.	
Datatype	CD	
DCM::DefinitionCode	NL-CM:2.1.11	
DCM::ExampleValue	Patient	
DCM::ValueSet	GeverifieerdBijCodelijst	OID: 2.16.840.1.113883.2.4.3.11.60.40.2.2.4
Options		

«data»	VerificatieDatum	
Alias	EN: VerificationDate	
Definition	Date on which the verification with the patient, the patient's family and/or the patient's authorized representative took place.	
Datatype	TS	
DCM::DefinitionCode	NL-CM:2.1.10	
DCM::ExampleValue	11-09-2012	
Options		

«data»	Behandeling	
Alias	EN: Treatment	
Definition	The medical treatment to which the treatment instruction applies.	

<b>Datatype</b>	CD	
<b>DCM::DefinitionCode</b>	NL-CM:2.1.3	
<b>DCM::DefinitionCode</b>	SNOMED CT: 50731006 Medical procedure (procedure)	
<b>DCM::ExampleValue</b>	Opname op intensive care	
<b>DCM::ValueSet</b>	BehandelingCodelijst	OID: 2.16.840.1.113883.2.4.3.11.60.40.2.2.1
<b>Options</b>		

<b>«data»</b>	<b>BehandelingToegestaan</b>	
<b>Alias</b>	EN: TreatmentPermitted	
<b>Definition</b>	Indication of permission for the treatment, no permission for the treatment, or permission for the treatment with constraints.	
<b>Datatype</b>	CD	
<b>DCM::DefinitionCode</b>	NL-CM:2.1.4	
<b>DCM::ExampleValue</b>	Ja, maar met beperkingen	
<b>DCM::ValueSet</b>	BehandelingToegestaanCode lijst	OID: 2.16.840.1.113883.2.4.3.11.60.40.2.2.2
<b>Options</b>		

<b>«data»</b>	<b>Beperkingen</b>	
<b>Alias</b>	EN: Constraints	
<b>Definition</b>	The constraints or specific circumstances that apply to a certain treatment.	
<b>Datatype</b>	ST	
<b>DCM::DefinitionCode</b>	NL-CM:2.1.5	
<b>DCM::ExampleValue</b>	Voor intubatie eerst overleg met echtgenote	
<b>Options</b>		

<b>«data»</b>	<b>BeginDatum</b>	
<b>Alias</b>	EN: StartDate	
<b>Definition</b>	Date on which the treatment instruction went into effect. A 'vague' date, such as only the year, is permitted.	
<b>Datatype</b>	TS	
<b>DCM::DefinitionCode</b>	NL-CM:2.1.6	
<b>DCM::ExampleValue</b>	30-08-2012	
<b>Options</b>		

<b>«data»</b>	<b>EindDatum</b>	
<b>Alias</b>	EN: EndDate	
<b>Definition</b>	Date on which the treatment instruction ends. A 'vague' date, such as only the year, is permitted. If the validity duration of the treatment instruction cannot be expressed as a date, such as "until discharge from hospital", it can be included in the Explanation concept.	
<b>Datatype</b>	TS	
<b>DCM::DefinitionCode</b>	NL-CM:2.1.7	
<b>DCM::ExampleValue</b>	31-06-2013	
<b>Options</b>		

<b>«data»</b>	<b>Toelichting</b>	
---------------	--------------------	--

<b>Alias</b>	EN: Explanation	
<b>Definition</b>	Comments on the treatment instruction such as a written description of an end date which can be indicated as a date (“until discharge from hospital”).	
<b>Datatype</b>	ST	
<b>DCM::DefinitionCode</b>	NL-CM:2.1.15	
<b>Options</b>		

<b>«data»</b>	<b>Wilsverklaring::Wilsverklaring</b>	
<b>Alias</b>	EN: LivingWill::LivingWill	
<b>Definition</b>	A (written) statement in which a person indicates wishes concerning future medical action, in the event that this person is at that point no longer (deemed) capable of taking decisions on the matter.	
<b>Datatype</b>		
<b>DCM::DefinitionCode</b>	NL-CM:2.1.14	
<b>DCM::ReferencedDefinitionCode</b>	NL-CM:7.15.1	This is a reference to concept Wilsverklaring in information model Wilsverklaring.
<b>Options</b>		

<b>«document»</b>	<b>BehandelingCodelijst</b>	
<b>Alias</b>		
<b>Definition</b>		
<b>Datatype</b>		
<b>Options</b>		

<b>BehandelingCodelijst</b>			<b>OID: 2.16.840.1.113883.2.4.3.11.60.40.2.2.1</b>	
Concept Name	Concept Code	Coding Syst. Name	Coding System OID	Description
Admission to intensive care unit (procedure)	305351004	SNOMED CT	2.16.840.1.113883.6.96	Opname op intensive care
Cardiopulmonary resuscitation (procedure)	89666000	SNOMED CT	2.16.840.1.113883.6.96	Cardiopulmonaire resuscitatie
Artificial respiration (procedure)	40617009	SNOMED CT	2.16.840.1.113883.6.96	Kunstmatige beademing
Administration of blood product (procedure)	116762002	SNOMED CT	2.16.840.1.113883.6.96	Toediening van een bloedproduct
Other	OTH	NullFlavor	2.16.840.1.113883.5.1008	Overige behandelingen, namelijk (in vrije tekst meegeven)

<b>«document»</b>	<b>BehandelingToegestaanCodelijst</b>	
<b>Alias</b>		
<b>Definition</b>		
<b>Datatype</b>		
<b>Options</b>		
<b>BehandelingToegestaanCodelijst</b>		<b>OID: 2.16.840.1.113883.2.4.3.11.60.40.2.2.2</b>

Concept Name	Concept Code	Coding Syst. Name	Coding System OID	Description
Ja	JA	NL-CM-CS	2.16.840.1.113883.2.4.3.11.60.40.4	Behandeling is toegestaan en/of wenselijk.
Ja, maar met beperkingen	JA_MAR	NL-CM-CS	2.16.840.1.113883.2.4.3.11.60.40.4	Behandeling toegestaan en/of wenselijk maar met beperkingen die dan ook vermeld moeten worden
Nee	NEE	NL-CM-CS	2.16.840.1.113883.2.4.3.11.60.40.4	Behandeling niet toegestaan en/of wenselijk

«document»		GeverifieerdBijCodelijst		
Alias				
Definition				
Datatype				
Options				
GeverifieerdBijCodelijst		OID: 2.16.840.1.113883.2.4.3.11.60.40.2.2.4		
Concept Name	Concept Code	Coding Syst. Name	Coding System OID	Description
Patient	116154003	SNOMED CT	2.16.840.1.113883.6.96	Patiënt
Parent	40683002	SNOMED CT	2.16.840.1.113883.6.96	Ouder
Guardian	394619001	SNOMED CT	2.16.840.1.113883.6.96	Voogd
Holder of enduring power of attorney	8601000146109	SNOMED CT	2.16.840.1.113883.6.96	Gevolmachtigde
Other	OTH	NullFlavor	2.16.840.1.113883.5.1008	Anders, namelijk (in vrije tekst meegeven)

## 1.8 Example Instances

Behandeling	Behandeling Toegestaan	Beperkingen	GeverifieerdBij	Verificatie Datum
Opname op Intensive Care	Ja		gevolmachtigde	11-9-2012

Behandeling	Behandeling Toegestaan	Beperkingen	GeverifieerdBij	Verificatie Datum
Cardiopulmonaire resuscitatie	Ja, maar met beperkingen	eerst overleg met echtgenote	patiënt	11-9-2012

## 1.9 Instructions



## **1.10 Interpretation**

## **1.11 Care Process**

## **1.12 Example of the Instrument**

## **1.13 Constraints**

## **1.14 Issues**

## **1.15 References**

## **1.16 Functional Model**

## **1.17 Traceability to other Standards**

## **1.18 Disclaimer**

This Health and Care Information Model (a.k.a Clinical Building Block) has been made in collaboration with several different parties in healthcare. These parties asked Nictiz to manage good maintenance and development of the information models. Hereafter, these parties and Nictiz are referred to as the collaborating parties. The collaborating parties paid utmost attention to the reliability and topicality of the data in these Health and Care Information Models. Omissions and inaccuracies may however occur. The collaborating parties are not liable for any damages resulting from omissions or inaccuracies in the information provided, nor are they liable for damages resulting from problems caused by or inherent to distributing information on the internet, such as malfunctions, interruptions, errors or delays in information or services provide by the parties to you or by you to the parties via a website or via e-mail, or any other digital means. The collaborating parties will also not accept liability for any damages resulting from the use of data, advice or ideas provided by or on behalf of the parties by means of this Health and Care Information Model. The parties will not accept any liability for the content of information in this Health and Care Information Model to which or from which a hyperlink is referred. In the event of contradictions in mentioned Health and Care Information Model documents and files, the most recent and highest version of the listed order in the revisions will indicate the priority of the documents in question. If information included in the digital version of this Health and Care Information Model is also distributed in writing, the written version will be leading in case of textual differences. This will apply if both have the same version number and date. A definitive version has priority over a draft version. A revised version has priority over previous versions.

## **1.19 Terms of Use**

The user may use the information in this Health and Care Information Model without limitations. The

copyright provisions in the paragraph concerned apply to copying, distributing and passing on information from this Health and Care Information Model.

## **1.20 Copyrights**

The user may copy, distribute and pass on the information in this Health and Care Information Model under the conditions that apply for Creative Commons license Attribution-NonCommercial-ShareAlike 3.0 Netherlands (CC BY-NC-SA-3.0). The content is available under Creative Commons Attribution-NonCommercial-ShareAlike 3.0 (see also <http://creativecommons.org/licenses/by-nc-sa/3.0/nl/>)