

Health & Care Information Mod nl.zorg.TNMTumorClassification-v1

Status: Final

Release: 2020

Release status: Published

Managed by:



Content

1. nl.zorg.TNMTumorClassification-v1.0	3
1.1 Revision History	3
1.2 Concept	3
1.3 Mindmap	3
1.4 Purpose	3
1.5 Patient Population	4
1.6 Evidence Base	4
1.7 Information Model	4
1.7.1 PrimaryTumor	11
1.7.2 RegionalLymphnodes	24
1.7.3 DistantMetastasis	40
1.8 Example Instances	45
1.9 Instructions	46
1.10 Interpretation	48
1.11 Care Process	48
1.12 Example of the Instrument	48
1.13 Constraints	48
1.14 Issues	48
1.15 References	48
1.16 Functional Model	48
1.17 Traceability to other Standards	48
1.18 Disclaimer	48
1.19 Terms of Use	49
1.20 Copyrights	49

1. nl.zorg.TNMTumorClassification-v1.0

DCM::CoderList	*
DCM::ContactInformation.Address	*
DCM::ContactInformation.Name	*
DCM::ContactInformation.Telecom	*
DCM::ContentAuthorList	*
DCM::CreationDate	15/05/2020
DCM::DeprecatedDate	
DCM::DescriptionLanguage	nl
DCM::EndorsingAuthority.Address	
DCM::EndorsingAuthority.Name	*
DCM::EndorsingAuthority.Telecom	
DCM::Id	2.16.840.1.113883.2.4.3.11.60.40.3.4.27
DCM::KeywordList	
DCM::LifecycleStatus	Final
DCM::ModelerList	*
DCM::Name	nl.zorg.TNMTumorClassificatie
DCM::PublicationDate	01-09-2020
DCM::PublicationStatus	Published
DCM::ReviewerList	
DCM::RevisionDate	
DCM::Supersedes	*
DCM::Version	1.0
HCIM::PublicationLanguage	EN

1.1 Revision History

Publicatieversie 1.0 (01-09-2020)

1.2 Concept

TNM Classification of Malignant Tumors (TNM) is the cancer staging system developed and is used by the Union for International Cancer Control (UICC). It is also used by the American Joint Committee on Cancer (AJCC) and the International Federation of Gynecology and Obstetrics (FIGO). In 1987, the UICC and AJCC staging systems were unified into the single TNM staging system. Nevertheless, there are still some differences between the two systems.

The TNM-classification is developed for solid tumors. TNM is a notation system that describes the extent of cancer, which originates from a solid tumor, using alphanumeric codes; T describes the size of the (primary) tumor and whether it has invaded nearby tissue, N describes nearby (regional) lymph nodes that are involved, and M describes distant metastasis (spread of cancer from one part of the body to another). In addition to T, N and M, the classification also contains other parameters that may be relevant.

1.3 Mindmap

The objectives of the TNM classification are the following:

- Aid treatment planning,
- Provide an indication of prognosis based on historical outcome data,
- Assist in the evaluation of treatment results,
- Facilitate the exchange of information between treatment centers,
- Contribute to continuing investigations of human malignancies,
- Support cancer control activities, including through cancer registries.

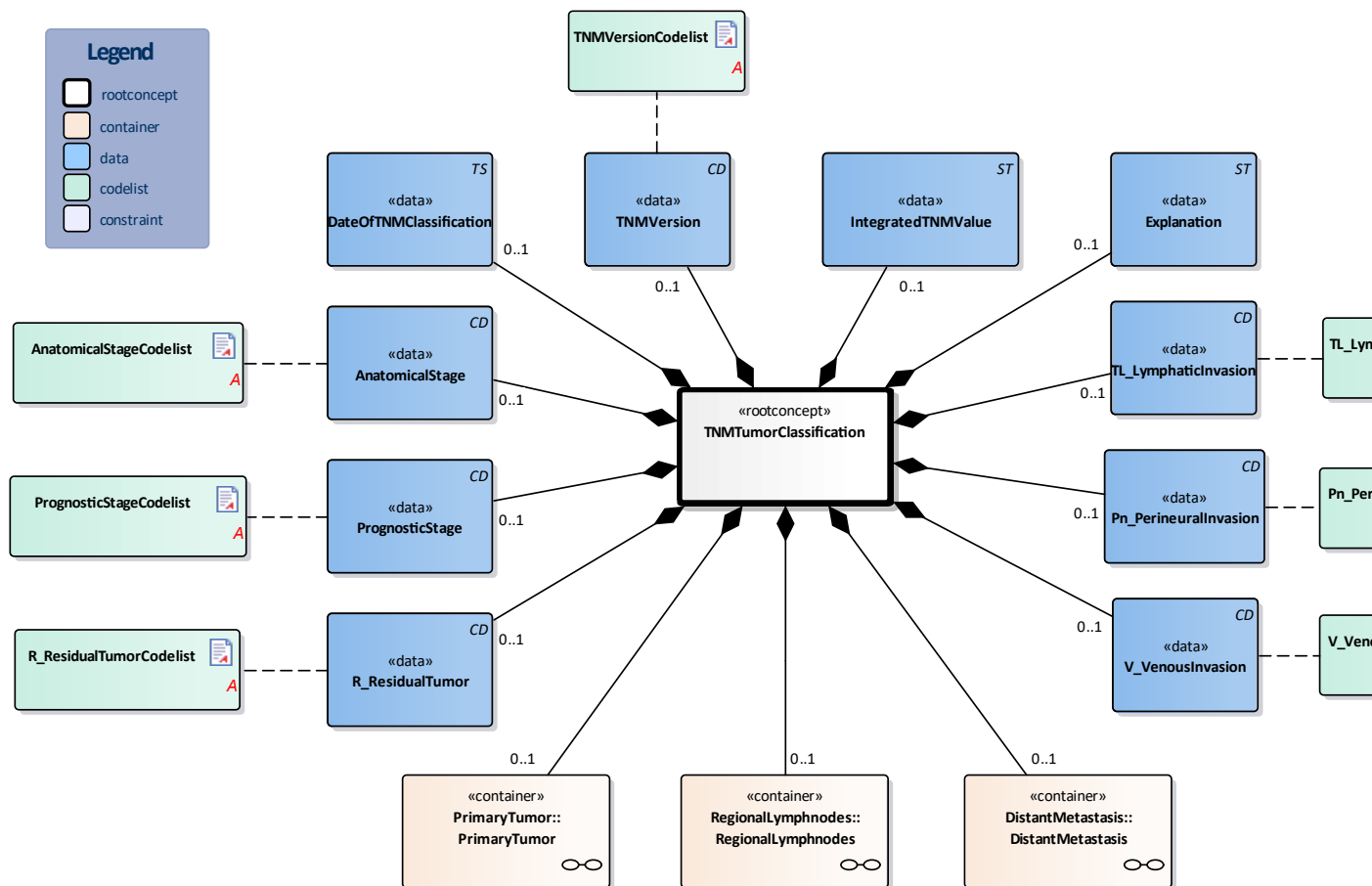
The TNM classification is a unified standard. It goes beyond clinician practice and constitutes vital information for policy-makers developing or implementing cancer control and prevention plans.

1.5 Patient Population

Adult patients with a solid tumor on which the TNM-classifications can be applied.

1.6 Evidence Base

1.7 Information Model



«rootconcept»	TNMTumorClassification
Definitie	Root concept of the TNMTumorClassification information model. This root concept contains all data elements of the TNMTumorClassification information model.

Datatype	TS	
DCM::ConceptId	NL-CM:4.27.2	
DCM::DefinitionCode	SNOMED CT: 399651003 Date of report	
DCM::ExampleValue	07-06-2020	
Opties		

«data»	TNMVersion	
Definitie	TNM classification version (AJCC or UICC) and edition used (7th, 8th et	
Datatype	CD	
DCM::ConceptId	NL-CM:4.27.3	
DCM::DefinitionCode	SNOMED CT: 273249006 Assessment scales	
DCM::ExampleValue	AJCC 8th	
DCM::ValueSet	TNMVersionCodelist	OID: 2.16.840.1.113883.2.4.3.11.60.40.2.4.27
Opties		

«data»	IntegratedTNMValue	
Definitie	The assigned TNM classification (the value), based on each T, N and M category (optional incl. multiple primary tumors (m) and/or the localization of M).	
Datatype	ST	
DCM::ConceptId	NL-CM:4.27.4	
DCM::DefinitionCode	SNOMED CT: 399703000 Integrated TNM category	
DCM::ExampleValue	pT1N0M0	
Opties		

«data»	Explanation	
Definitie	Remark regarding interpretation of the integrated TNM value as is classified.	
Datatype	ST	
DCM::ConceptId	NL-CM:4.27.5	
DCM::DefinitionCode	SNOMED CT: 243814003 Interpretation of findings	
DCM::ExampleValue	hoger stadium vanwege positieve lymfeklieren pelvis	
Opties		

«data»	TL_LymphaticInvasion	
Definitie	Presence or absence of tissue invasion absence of lymphatic invasion, t L-category. It concerns an additional description within the TNM classification that is determined by a pathologist.	
Datatype	CD	
DCM::ConceptId	NL-CM:4.27.6	

Definitie	Presence or absence of perineural invasion, the Pn-category. It concerns an additional description within the TNM classification that is determined by the pathologist.	
Datatype	CD	
DCM::ConceptId	NL-CM:4.27.7	
DCM::DefinitionCode	SNOMED CT: 371513001 Status of perineural invasion by tumor	
DCM::ValueSet	Pn_PerineuralInvasionCodeList	OID: 2.16.840.1.113883.2.4.3.11.60.40.2.4.27
Opties		

«data»	V_VenousInvasion	
Definitie	Presence or absence of venous invasion, the V-category. It concerns an additional description within the TNM classification that is determined by the pathologist.	
Datatype	CD	
DCM::ConceptId	NL-CM:4.27.8	
DCM::DefinitionCode	SNOMED CT: 371493002 Status of venous (large vessel) invasion by tumor	
DCM::ValueSet	V_VenousInvasionCodeList	OID: 2.16.840.1.113883.2.4.3.11.60.40.2.4.27
Opties		

«data»	AnatomicalStage	
Definitie	The stage of the disease is the grouping based on the anatomical extent of the disease.	
Datatype	CD	
DCM::ConceptId	NL-CM:4.27.9	
DCM::DefinitionCode	SNOMED CT: 399390009 TNM stage grouping	
DCM::ValueSet	AnatomicalStageCodeList	OID: 2.16.840.1.113883.2.4.3.11.60.40.2.4.27
Opties		

«data»	PrognosticStage	
Definitie	The Prognostic Stage group of the disease. Next to the anatomic extent of the disease additional prognostic factors are included in the grouping.	
Datatype	CD	
DCM::ConceptId	NL-CM:4.27.10	
DCM::DefinitionCode	SNOMED CT: 399390009 TNM stage grouping	
DCM::ValueSet	PrognosticStageCodeList	OID: 2.16.840.1.113883.2.4.3.11.60.40.2.4.27
Opties		

Opties	
---------------	--

«document»	AnatomicalStageCodelist	
Definitie		
Datatype		
DCM::ValueSetBinding	Extensible	
DCM::ValueSetId	2.16.840.1.113883.2.4.3.11.60.40.2.4.27.1	
Opties		

AnatomischStadiumCodelijst	OID: 2.16.840.1.113883.2.4.3.11.60.40.2.4.27.1
-----------------------------------	---

Concept Name	Concept Code	Coding System Name	Coding System OID	Description
Stadium 0	Stage0	AnatomischStadium	2.16.840.1.113883.2.4.3.11.60.40.4.10.6	Stadium 0
Stadium I	Stagel	AnatomischStadium	2.16.840.1.113883.2.4.3.11.60.40.4.10.6	Stadium I
Stadium IA	StagelA	AnatomischStadium	2.16.840.1.113883.2.4.3.11.60.40.4.10.6	Stadium IA
Stadium IA1	StagelA1	AnatomischStadium	2.16.840.1.113883.2.4.3.11.60.40.4.10.6	Stadium IA1
Stadium IA2	StagelA2	AnatomischStadium	2.16.840.1.113883.2.4.3.11.60.40.4.10.6	Stadium IA2
Stadium IA3	StagelA3	AnatomischStadium	2.16.840.1.113883.2.4.3.11.60.40.4.10.6	Stadium IA3
Stadium IC	StagelC	AnatomischStadium	2.16.840.1.113883.2.4.3.11.60.40.4.10.6	Stadium IC
Stadium IB	StagelB	AnatomischStadium	2.16.840.1.113883.2.4.3.11.60.40.4.10.6	Stadium IB
Stadium IB1	StagelB1	AnatomischStadium	2.16.840.1.113883.2.4.3.11.60.40.4.10.6	Stadium IB1
Stadium IB2	StagelB2	AnatomischStadium	2.16.840.1.113883.2.4.3.11.60.40.4.10.6	Stadium IB2
Stadium IS	Stagels	AnatomischStadium	2.16.840.1.113883.2.4.3.11.60.40.4.10.6	Stadium IS
Stadium II	Stagell	AnatomischStadium	2.16.840.1.113883.2.4.3.11.60.40.4.10.6	Stadium II
Stadium IIA	StagellA	AnatomischStadium	2.16.840.1.113883.2.4.3.11.60.40.4.10.6	Stadium IIA
Stadium IIA1	StagellA1	AnatomischStadium	2.16.840.1.113883.2.4.3.11.60.40.4.10.6	Stadium IIA1
Stadium IIA2	StagellA2	AnatomischStadium	2.16.840.1.113883.2.4.3.11.60.40.4.10.6	Stadium IIA2
Stadium IIB	StagellB	AnatomischStadium	2.16.840.1.113883.2.4.3.11.60.40.4.10.6	Stadium IIB
Stadium IIC	StagellC	AnatomischStadium	2.16.840.1.113883.2.4.3.11.60.40.4.10.6	Stadium IIC
Stadium III	Stagelll	AnatomischStadium	2.16.840.1.113883.2.4.3.11.60.40.4.10.6	Stadium III
Stadium IIIA	StagelllA	AnatomischStadium	2.16.840.1.113883.2.4.3.11.60.40.4.10.6	Stadium IIIA
Stadium IIIA1	StagelllA1	AnatomischStadium	2.16.840.1.113883.2.4.3.11.60.40.4.10.6	Stadium IIIA1

Stadium IIID	StageIIID	AnatomischStadium	2.16.840.1.113883.2.4.3.11.60.40.4.10.6	Stadium IIID
Stadium IV	StageIV	AnatomischStadium	2.16.840.1.113883.2.4.3.11.60.40.4.10.6	Stadium IV
Stadium IVA	StageIVA	AnatomischStadium	2.16.840.1.113883.2.4.3.11.60.40.4.10.6	Stadium IVA
Stadium IVB	StageIVB	AnatomischStadium	2.16.840.1.113883.2.4.3.11.60.40.4.10.6	Stadium IVB
Stadium IVC	StageIVC	AnatomischStadium	2.16.840.1.113883.2.4.3.11.60.40.4.10.6	Stadium IVC

«document»		Pn_PerineuralInvasionCodelist		
Definitie				
Datatype				
DCM::ValueSetBinding		Extensible		
DCM::ValueSetId		2.16.840.1.113883.2.4.3.11.60.40.2.4.27.3		
Opties				

Pn_PerineuraleInvasieCodelijst			OID: 2.16.840.1.113883.2.4.3.11.60.40.2.4.27.3	
Concept Name	Concept Code	Coding System Name	Coding System OID	Description
PnX	PnX	Pn_PerineuraleInvasie	2.16.840.1.113883.2.4.3.11.60.40.5.1.3	Aanwezigheid van Perineurale invasie k niet beoordeeld wor
Pn0	Pn0	Pn_PerineuraleInvasie	2.16.840.1.113883.2.4.3.11.60.40.5.1.3	Geen Perineurale invasie
Pn1	Pn1	Pn_PerineuraleInvasie	2.16.840.1.113883.2.4.3.11.60.40.5.1.3	Perineurale invasie

«document»		PrognosticStageCodelist		
Definitie				
Datatype				
DCM::ValueSetBinding		Extensible		
DCM::ValueSetId		2.16.840.1.113883.2.4.3.11.60.40.2.4.27.4		
Opties				

PrognostischStadiumCodelijst			OID: 2.16.840.1.113883.2.4.3.11.60.40.2.4.27.4	
Concept Name	Concept Code	Coding System Name	Coding System OID	Description
Stadium 0	Stage0	PrognostischStadium	2.16.840.1.113883.2.4.3.11.60.40.4.10.7	Stadium

Stadium IC	StageIC	PrognostischStadium	2.16.840.1.113883.2.4.3.11.60.40.4.10.7	Stadium IC
Stadium IB	StageIB	PrognostischStadium	2.16.840.1.113883.2.4.3.11.60.40.4.10.7	Stadium IB
Stadium IB1	StageIB1	PrognostischStadium	2.16.840.1.113883.2.4.3.11.60.40.4.10.7	Stadium IB1
Stadium IB2	StageIB2	PrognostischStadium	2.16.840.1.113883.2.4.3.11.60.40.4.10.7	Stadium IB2
Stadium IS	StageIS	PrognostischStadium	2.16.840.1.113883.2.4.3.11.60.40.4.10.7	Stadium IS
Stadium II	StageII	PrognostischStadium	2.16.840.1.113883.2.4.3.11.60.40.4.10.7	Stadium II
Stadium IIA	StageIIA	PrognostischStadium	2.16.840.1.113883.2.4.3.11.60.40.4.10.7	Stadium IIA
Stadium IIA1	StageIIA1	PrognostischStadium	2.16.840.1.113883.2.4.3.11.60.40.4.10.7	Stadium IIA1
Stadium IIA2	StageIIA2	PrognostischStadium	2.16.840.1.113883.2.4.3.11.60.40.4.10.7	Stadium IIA2
Stadium IIB	StageIIB	PrognostischStadium	2.16.840.1.113883.2.4.3.11.60.40.4.10.7	Stadium IIB
Stadium IIC	StageIIC	PrognostischStadium	2.16.840.1.113883.2.4.3.11.60.40.4.10.7	Stadium IIC
Stadium III	StageIII	PrognostischStadium	2.16.840.1.113883.2.4.3.11.60.40.4.10.7	Stadium III
Stadium IIIA	StageIIIA	PrognostischStadium	2.16.840.1.113883.2.4.3.11.60.40.4.10.7	Stadium IIIA
Stadium IIIA1	StageIIIA1	PrognostischStadium	2.16.840.1.113883.2.4.3.11.60.40.4.10.7	Stadium IIIA1
Stadium IIIA2	StageIIIA2	PrognostischStadium	2.16.840.1.113883.2.4.3.11.60.40.4.10.7	Stadium IIIA2
Stadium IIIB	StageIIIB	PrognostischStadium	2.16.840.1.113883.2.4.3.11.60.40.4.10.7	Stadium IIIB
Stadium IIIC	StageIIIC	PrognostischStadium	2.16.840.1.113883.2.4.3.11.60.40.4.10.7	Stadium IIIC
Stadium IIIC1	StageIIIC1	PrognostischStadium	2.16.840.1.113883.2.4.3.11.60.40.4.10.7	Stadium IIIC1
Stadium IIIC2	StageIIIC2	PrognostischStadium	2.16.840.1.113883.2.4.3.11.60.40.4.10.7	Stadium IIIC2
Stadium IIID	StageIIID	PrognostischStadium	2.16.840.1.113883.2.4.3.11.60.40.4.10.7	Stadium IIID
Stadium IV	StageIV	PrognostischStadium	2.16.840.1.113883.2.4.3.11.60.40.4.10.7	Stadium IV
Stadium IVA	StageIVA	PrognostischStadium	2.16.840.1.113883.2.4.3.11.60.40.4.10.7	Stadium IVA
Stadium IVB	StageIVB	PrognostischStadium	2.16.840.1.113883.2.4.3.11.60.40.4.10.7	Stadium IVB
Stadium IVC	StageIVC	PrognostischStadium	2.16.840.1.113883.2.4.3.11.60.40.4.10.7	Stadium IVC

«document»	R_ResidualTumorCodelist		
Definitie			
Datatype			
DCM::ValueSetBinding	Extensible		

				niet beoordeeld wor
R0	R0	R_ResidueleTumor	2.16.840.1.113883.2.4.3.11.60.40.4.10.4	Geen residuele tumor
R1	R1	R_ResidueleTumor	2.16.840.1.113883.2.4.3.11.60.40.4.10.4	Microscopische residuele tumor
R2	R2	R_ResidueleTumor	2.16.840.1.113883.2.4.3.11.60.40.4.10.4	Macroscopische residuele tumor

«document»		TL_LymphaticInvasionCodelist		
Definitie				
Datatype				
DCM::ValueSetBinding		Extensible		
DCM::ValueSetId		2.16.840.1.113883.2.4.3.11.60.40.2.4.27.2		
Opties				

L_LymfatischeInvasieCodelijst				OID: 2.16.840.1.113883.2.4.3.11.60.40.2.4.27.2
Concept Name	Concept Code	Coding System Name	Coding System OID	Description
LX	LX	L_LymfatischeInvasie	2.16.840.1.113883.2.4.3.11.60.40.4.10.9	Aanwezigheid van Lymfatische invasie kan niet beoordeeld worden
L0	L0	L_LymfatischeInvasie	2.16.840.1.113883.2.4.3.11.60.40.4.10.9	Geen Lymfatische invasie
L1	L1	L_LymfatischeInvasie	2.16.840.1.113883.2.4.3.11.60.40.4.10.9	Lymfatische invasie

«document»		TNMVersionCodelist		
Definitie				
Datatype				
DCM::ValueSetBinding		Extensible		
DCM::ValueSetId		2.16.840.1.113883.2.4.3.11.60.40.2.4.27.6		
Opties				

TNMVersieCodelijst				OID: 2.16.840.1.113883.2.4.3.11.60.40.2.4.27.6
Concept Name	Concept Code	Coding System Name	Coding System OID	Description
AJCC 1ste editie	AJCCTNM1	TNMVersie	2.16.840.1.113883.2.4.3.11.60.40.4.10.8	AJCC TNM 1ste editie
AJCC 2e editie	AJCCTNM2	TNMVersie	2.16.840.1.113883.2.4.3.11.60.40.4.10.8	AJCC TNM 2e editie
AJCC 3e editie	AJCCTNM3	TNMVersie	2.16.840.1.113883.2.4.3.11.60.40.4.10.8	AJCC TNM 3e editie
AJCC 4e editie	AJCCTNM4	TNMVersie	2.16.840.1.113883.2.4.3.11.60.40.4.10.8	AJCC TNM 4e editie

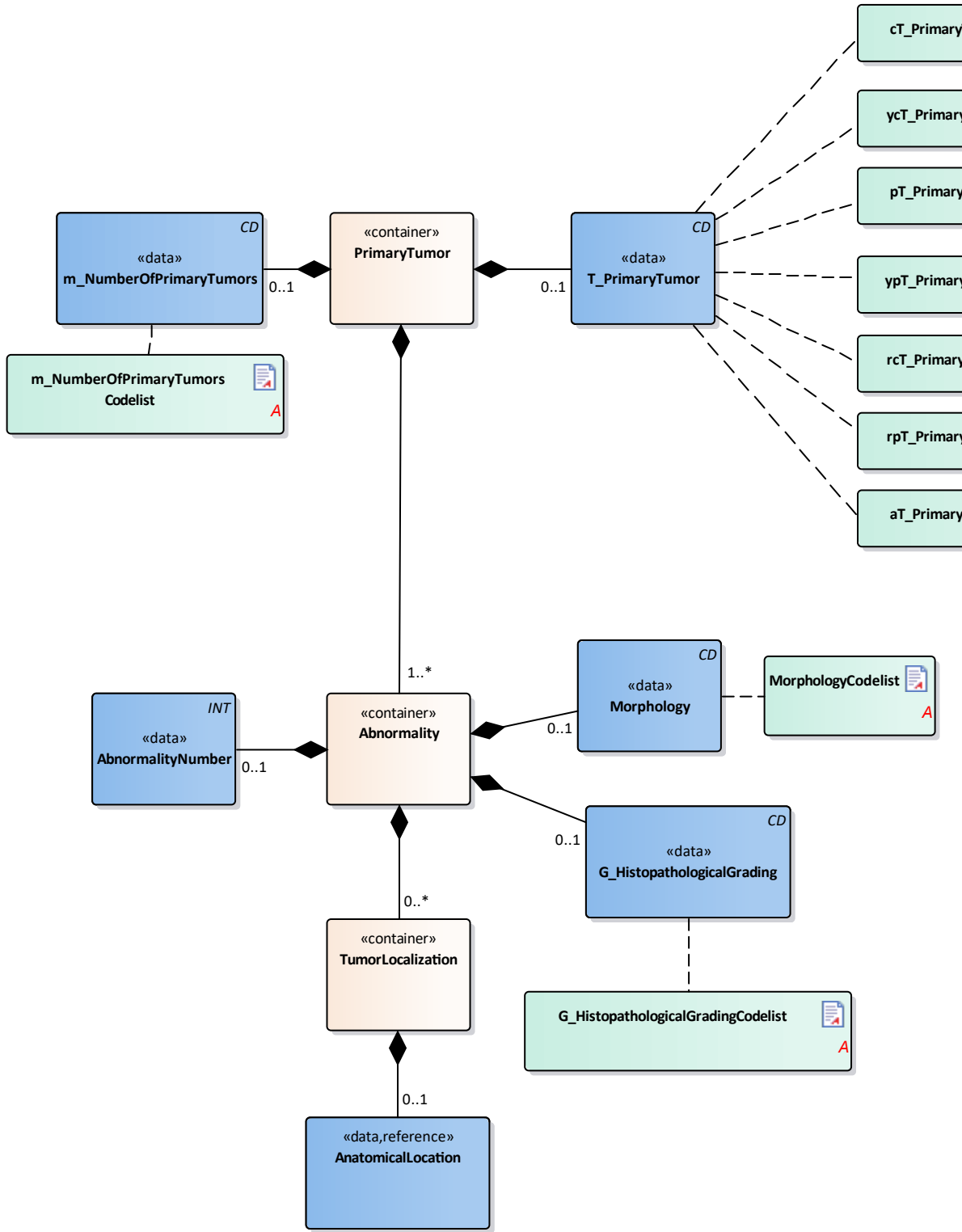
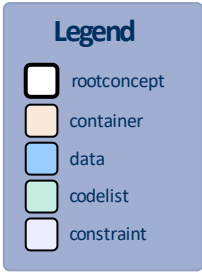
UICC 2e editie	UICCTNM2	TNMVersie	2.16.840.1.113883.2.4.3.11.60.40.4.10.8	UICC TNM 2e editie
UICC 3e editie	UICCTNM3	TNMVersie	2.16.840.1.113883.2.4.3.11.60.40.4.10.8	UICC TNM 3e editie
UICC 4e editie	UICCTNM4	TNMVersie	2.16.840.1.113883.2.4.3.11.60.40.4.10.8	UICC TNM 4e editie
UICC 5e editie	UICCTNM5	TNMVersie	2.16.840.1.113883.2.4.3.11.60.40.4.10.8	UICC TNM 5e editie
UICC 6e editie	UICCTNM6	TNMVersie	2.16.840.1.113883.2.4.3.11.60.40.4.10.8	UICC TNM 6e editie
UICC 7e editie	UICCTNM7	TNMVersie	2.16.840.1.113883.2.4.3.11.60.40.4.10.8	UICC TNM 7e editie
UICC 8e editie	UICCTNM8	TNMVersie	2.16.840.1.113883.2.4.3.11.60.40.4.10.8	UICC TNM 8e editie

«document»		V_VenousInvasionCodelist	
Definitie			
Datatype			
DCM::ValueSetBinding	Extensible		
DCM::ValueSetId	2.16.840.1.113883.2.4.3.11.60.40.2.4.27.7		
Opties			

V_VeneuzeInvasieCodelijst			OID: 2.16.840.1.113883.2.4.3.11.60.40.2.4.27.7	
Concept Name	Concept Code	Coding System Name	Coding System OID	Description
VX	VX	V_VeneuzeInvasie	2.16.840.1.113883.2.4.3.11.60.40.5.1.4	Aanwezigheid van veneuze invasie kan beoordeeld worden
V0	V0	V_VeneuzeInvasie	2.16.840.1.113883.2.4.3.11.60.40.5.1.4	Geen veneuze invasie
V1	V1	V_VeneuzeInvasie	2.16.840.1.113883.2.4.3.11.60.40.5.1.4	Microscopische veneuze invasie
V2	V2	V_VeneuzeInvasie	2.16.840.1.113883.2.4.3.11.60.40.5.1.4	Macroscopische veneuze invasie

Legend	
Definitie	
Datatype	
Opties	

1.7.1 PrimaryTumor



«container»	PrimaryTumor	
Definitie	Container of the PrimaryTumor concept. This container contains all data elements of the PrimaryTumor concept.	
Datatype		
DCM::ConceptId	NL-CM:4.27.12	
DCM::DefinitionCode	SNOMED CT: 86049000 Neoplasm, malignant (primary)	
Opties		

«data»	m_NumberOfPrimaryTumors
---------------	--------------------------------

DCM::DefinitionCode	SNOMED CT: 133641000146103 number of primary tumors	
DCM::ValueSet	m_NumberOfPrimaryTumors Codelist	OID: 2.16.840.1.113883.2.4.3.11.60.40.2.4.27
Opties		

«data»	T_PrimaryTumor	
Definitie	Staging result of the size extension of the primary tumor, the T-category the TNM classification including the prefix and suffix.	
Datatype	CD	
DCM::ConceptId	NL-CM:4.27.14	
DCM::DefinitionCode	SNOMED CT: 78873005 T category	
DCM::ExampleValue	T2	
DCM::ValueSet	rcT_PrimaryTumorCodelist	OID: 2.16.840.1.113883.2.4.3.11.60.40.2.4.27
DCM::ValueSet	aT_PrimaryTumorCodelist	OID: 2.16.840.1.113883.2.4.3.11.60.40.2.4.27
DCM::ValueSet	cT_PrimaryTumorCodelist	OID: 2.16.840.1.113883.2.4.3.11.60.40.2.4.27
DCM::ValueSet	ycT_PrimaryTumorCodelist	OID: 2.16.840.1.113883.2.4.3.11.60.40.2.4.27
DCM::ValueSet	ypT_PrimaryTumorCodelist	OID: 2.16.840.1.113883.2.4.3.11.60.40.2.4.27
DCM::ValueSet	rpT_PrimaryTumorCodelist	OID: 2.16.840.1.113883.2.4.3.11.60.40.2.4.27
DCM::ValueSet	pT_PrimaryTumorCodelist	OID: 2.16.840.1.113883.2.4.3.11.60.40.2.4.27
Opties		

«container»	Abnormality	
Definitie	Container of the Abnormality concept.This container contains all data elements of the Abnormality concept.	
Datatype		
DCM::ConceptId	NL-CM:4.27.15	
DCM::DefinitionCode	SNOMED CT: 108369006 Neoplasm	
Opties		

«data»	AbnormalityNumber	
Definitie	The number assigned to the abnormality, which is necessary in order to able to clearly indicate to which abnormality the information relates in various examinations. In the case of multiple primary tumors in one organ, the tumor with the highest T category should be classified.	

Datatype	CD	
DCM::ConceptId	NL-CM:4.27.17	
DCM::DefinitionCode	SNOMED CT: 396984004 Histologic feature of tumor	
DCM::ValueSet	MorphologyCodelist	OID: 2.16.840.1.113883.2.4.3.11.60.40.2.4.27
Opties		

«data»	G_HistopathologicalGrading	
Definitie	Staging result of the histopathological grading, the G-category of the TNM classification. The differentiation grade of a tumor is determined by a pathologist.	
Datatype	CD	
DCM::ConceptId	NL-CM:4.27.18	
DCM::DefinitionCode	SNOMED CT: 371469007 Histologic grade	
DCM::ExampleValue	Grade II (Moderately differentiated)	
DCM::ValueSet	G_HistopathologicalGrading Codelist	OID: 2.16.840.1.113883.2.4.3.11.60.40.2.4.27
Opties		

«container»	TumorLocalization	
Definitie	Container of the TumorLocalization concept. This container contains all elements of the TumorLocalization concept.	
Datatype		
DCM::ConceptId	NL-CM:4.27.19	
DCM::DefinitionCode	SNOMED CT: 399687005 Primary tumor site	
Opties		

«data»	AnatomicalLocation	
Definitie	Contains the localization(s) of the primary tumor, which (i.a.) determines the assignment of the TNM classification to the tumor.	
Datatype		
DCM::ConceptId	NL-CM:4.27.20	
DCM::DefinitionCode	SNOMED CT: 399687005 Primary tumor site	
DCM::ReferencedConceptId	NL-CM:20.7.1	This is a reference to the root concept of information model AnatomicalLocation.
Opties		

«document»	m_NumberOfPrimaryTumors Codelist	
Definitie		
Datatype		
DCM::ValueSetBinding	Extensible	

(1)	(1)	m_AantalPrimaire Tumoren	2.16.840.1.113883.2.4.3.11.60.40.4.10.12	1 primaire tumor
(2)	(2)	m_AantalPrimaire Tumoren	2.16.840.1.113883.2.4.3.11.60.40.4.10.12	2 primaire tumor
(3)	(3)	m_AantalPrimaire Tumoren	2.16.840.1.113883.2.4.3.11.60.40.4.10.12	3 primaire tumor
(4)	(4)	m_AantalPrimaire Tumoren	2.16.840.1.113883.2.4.3.11.60.40.4.10.12	4 primaire tumor
(5)	(5)	m_AantalPrimaire Tumoren	2.16.840.1.113883.2.4.3.11.60.40.4.10.12	5 primaire tumor
(6)	(6)	m_AantalPrimaire Tumoren	2.16.840.1.113883.2.4.3.11.60.40.4.10.12	6 primaire tumor
(7)	(7)	m_AantalPrimaire Tumoren	2.16.840.1.113883.2.4.3.11.60.40.4.10.12	7 primaire tumor
(8)	(8)	m_AantalPrimaire Tumoren	2.16.840.1.113883.2.4.3.11.60.40.4.10.12	8 primaire tumor
(9)	(9)	m_AantalPrimaire Tumoren	2.16.840.1.113883.2.4.3.11.60.40.4.10.12	9 primaire tumor
(10)	(10)	m_AantalPrimaire Tumoren	2.16.840.1.113883.2.4.3.11.60.40.4.10.12	10 primaire tumor
Other	OTH	NullFlavor	2.16.840.1.113883.5.1008	Anders, specifieke

«document»		G_HistopathologicalGradingCodelist		
Definitie				
Datatype				
DCM::ValueSetBinding		Extensible		
DCM::ValueSetId		2.16.840.1.113883.2.4.3.11.60.40.2.4.27.17		
Opties				
G_DifferentiatiegraadTumorCodelijst			OID: 2.16.840.1.113883.2.4.3.11.60.40.2.4.27.17	
Concept Name	Concept Code	Coding System Name	Coding System OID	Description
GX	GX	G_DifferentiatiegraadTumor	2.16.840.1.113883.2.4.3.11.60.40.4.10.5	Differentiatiegraad niet beoordeeld w
G1	G1	G_DifferentiatiegraadTumor	2.16.840.1.113883.2.4.3.11.60.40.4.10.5	Goed gedifferentie
G2	G2	G_Differentiatie	2.16.840.1.113883.2.4.3.11.60.40.4.10.5	Matig gedifferent

				9-10)
LowMitoticRate	LowMitoticRate	G_Differentiatie graadTumor	2.16.840.1.113883.2.4.3.11.60.4 0.4.10.5	Lage mitotische ra
HighMitoticRate	HighMitoticRate	G_Differentiatie graadTumor	2.16.840.1.113883.2.4.3.11.60.4 0.4.10.5	Hoge mitotische ra

«document»		MorphologyCodelist		
Definitie				
Datatype				
DCM::ValueSetBinding	Extensible			
DCM::ValueSetId	2.16.840.1.113883.2.4.3.11. 60.40.2.4.27.16			
Opties				
MorfologieCodelijst		OID: 2.16.840.1.113883.2.4.3.11.60.40.2.4.27.16		
Codes		Coding Syst. Name	Coding System OID	
International Classification of Diseases for Oncology, version 3 (Morphology codes)		ICD-O-3	2.16.840.1.113883.6.43.1	

«document»		cT_PrimaryTumorCodelist		
Definitie	De primaire tumor (T) voor een klinische classificatie, gebaseerd op gegevens vóór behandeling, zoals klinisch onderzoek, beeldvorming, endoscopie, bipten, chirurgische exploratie of onderzoek onder narcose en andere onderzoeken			
Datatype				
DCM::ValueSetBinding	Extensible			
DCM::ValueSetId	2.16.840.1.113883.2.4.3.11. 60.40.2.4.27.9			
Opties				

cT_PrimaireTumorCodelijst		OID: 2.16.840.1.113883.2.4.3.11.60.40.2.4.27.9		
Concept Name	Concept Code	Coding System Name	Coding System OID	Description
cTx	cTx	T_PrimaireTumor	2.16.840.1.113883.2.4.3.11.60.40.4.10.1	cTx
cT0	cT0	T_PrimaireTumor	2.16.840.1.113883.2.4.3.11.60.40.4.10.1	cT0
cTa	cTa	T_PrimaireTumor	2.16.840.1.113883.2.4.3.11.60.40.4.10.1	cTa
cTis	cTis	T_PrimaireTumor	2.16.840.1.113883.2.4.3.11.60.40.4.10.1	cTis
cTis (DCIS)	cTis (DCIS)	T_PrimaireTumor	2.16.840.1.113883.2.4.3.11.60.40.4.10.1	cTis (DCIS)
cTis (LAMN)	cTis (LAMN)	T_PrimaireTumor	2.16.840.1.113883.2.4.3.11.60.40.4.10.1	cTis (LAMN)
cTis (LCIS)	cTis (LCIS)	T_PrimaireTumor	2.16.840.1.113883.2.4.3.11.60.40.4.10.1	cTis (LCIS)
cTis (Paget)	cTis (Paget)	T_PrimaireTumor	2.16.840.1.113883.2.4.3.11.60.40.4.10.1	cTis (Paget)
cTis pu	cTis pu	T_PrimaireTumor	2.16.840.1.113883.2.4.3.11.60.40.4.10.1	cTis pu
cT1	cT1	T_PrimaireTumor	2.16.840.1.113883.2.4.3.11.60.40.4.10.1	cT1

cT1c	cT1c	T_PrimaireTumor	2.16.840.1.113883.2.4.3.11.60.40.4.10.1	cT1c
cT1c1	cT1c1	T_PrimaireTumor	2.16.840.1.113883.2.4.3.11.60.40.4.10.1	cT1c1
cT1c2	cT1c2	T_PrimaireTumor	2.16.840.1.113883.2.4.3.11.60.40.4.10.1	cT1c2
cT1c3	cT1c3	T_PrimaireTumor	2.16.840.1.113883.2.4.3.11.60.40.4.10.1	cT1c3
cT1d	cT1d	T_PrimaireTumor	2.16.840.1.113883.2.4.3.11.60.40.4.10.1	cT1d
cT2	cT2	T_PrimaireTumor	2.16.840.1.113883.2.4.3.11.60.40.4.10.1	cT2
cT2a	cT2a	T_PrimaireTumor	2.16.840.1.113883.2.4.3.11.60.40.4.10.1	cT2a
cT2a1	cT2a1	T_PrimaireTumor	2.16.840.1.113883.2.4.3.11.60.40.4.10.1	cT2a1
cT2a2	cT2a2	T_PrimaireTumor	2.16.840.1.113883.2.4.3.11.60.40.4.10.1	cT2a2
cT2b	cT2b	T_PrimaireTumor	2.16.840.1.113883.2.4.3.11.60.40.4.10.1	cT2b
cT2c	cT2c	T_PrimaireTumor	2.16.840.1.113883.2.4.3.11.60.40.4.10.1	cT2c
cT2d	cT2d	T_PrimaireTumor	2.16.840.1.113883.2.4.3.11.60.40.4.10.1	cT2d
cT3	cT3	T_PrimaireTumor	2.16.840.1.113883.2.4.3.11.60.40.4.10.1	cT3
cT3a	cT3a	T_PrimaireTumor	2.16.840.1.113883.2.4.3.11.60.40.4.10.1	cT3a
cT3b	cT3b	T_PrimaireTumor	2.16.840.1.113883.2.4.3.11.60.40.4.10.1	cT3b
cT3c	cT3c	T_PrimaireTumor	2.16.840.1.113883.2.4.3.11.60.40.4.10.1	cT3c
cT3d	cT3d	T_PrimaireTumor	2.16.840.1.113883.2.4.3.11.60.40.4.10.1	cT3d
cT3e	cT3e	T_PrimaireTumor	2.16.840.1.113883.2.4.3.11.60.40.4.10.1	cT3e
cT4	cT4	T_PrimaireTumor	2.16.840.1.113883.2.4.3.11.60.40.4.10.1	cT4
cT4a	cT4a	T_PrimaireTumor	2.16.840.1.113883.2.4.3.11.60.40.4.10.1	cT4a
cT4b	cT4b	T_PrimaireTumor	2.16.840.1.113883.2.4.3.11.60.40.4.10.1	cT4b
cT4c	cT4c	T_PrimaireTumor	2.16.840.1.113883.2.4.3.11.60.40.4.10.1	cT4c
cT4d	cT4d	T_PrimaireTumor	2.16.840.1.113883.2.4.3.11.60.40.4.10.1	cT4d
cT4e	cT4e	T_PrimaireTumor	2.16.840.1.113883.2.4.3.11.60.40.4.10.1	cT4e

«document»	ycT_PrimaryTumorCodelist		
Definitie	De primaire tumor (T) voor een klinische classificatie uitgevoerd tijdens na een initiële multimodaliteitsbehandeling (zijnde niet- chirurgisch).		
Datatype			
DCM::ValueSetBinding	Extensible		
DCM::ValueSetId	2.16.840.1.113883.2.4.3.11.60.40.2.4.27.10		
Opties			

ycT_PrimaireTumorCodelijst			OID: 2.16.840.1.113883.2.4.3.11.60.40.2.4.27.10	
Concept Name	Concept Code	Coding System Name	Coding System OID	Description
ycTx	ycTx	T_PrimaireTumor	2.16.840.1.113883.2.4.3.11.60.40.4.10.1	ycTx
ycT0	ycT0	T_PrimaireTumor	2.16.840.1.113883.2.4.3.11.60.40.4.10.1	ycT0
ycTa	ycTa	T_PrimaireTumor	2.16.840.1.113883.2.4.3.11.60.40.4.10.1	ycTa
ycTis	ycTis	T_PrimaireTumor	2.16.840.1.113883.2.4.3.11.60.40.4.10.1	ycTis

ycT1a1	ycT1a1	T_PrimaireTumor	2.16.840.1.113883.2.4.3.11.60.40.4.10.1	ycT1a1
ycT1a2	ycT1a2	T_PrimaireTumor	2.16.840.1.113883.2.4.3.11.60.40.4.10.1	ycT1a2
ycT1b	ycT1b	T_PrimaireTumor	2.16.840.1.113883.2.4.3.11.60.40.4.10.1	ycT1b
ycT1b1	ycT1b1	T_PrimaireTumor	2.16.840.1.113883.2.4.3.11.60.40.4.10.1	ycT1b1
ycT1b2	ycT1b2	T_PrimaireTumor	2.16.840.1.113883.2.4.3.11.60.40.4.10.1	ycT1b2
ycT1c	ycT1c	T_PrimaireTumor	2.16.840.1.113883.2.4.3.11.60.40.4.10.1	ycT1c
ycT1c1	ycT1c1	T_PrimaireTumor	2.16.840.1.113883.2.4.3.11.60.40.4.10.1	ycT1c1
ycT1c2	ycT1c2	T_PrimaireTumor	2.16.840.1.113883.2.4.3.11.60.40.4.10.1	ycT1c2
ycT1c3	ycT1c3	T_PrimaireTumor	2.16.840.1.113883.2.4.3.11.60.40.4.10.1	ycT1c3
ycT1d	ycT1d	T_PrimaireTumor	2.16.840.1.113883.2.4.3.11.60.40.4.10.1	ycT1d
ycT2	ycT2	T_PrimaireTumor	2.16.840.1.113883.2.4.3.11.60.40.4.10.1	ycT2
ycT2a	ycT2a	T_PrimaireTumor	2.16.840.1.113883.2.4.3.11.60.40.4.10.1	ycT2a
ycT2a1	ycT2a1	T_PrimaireTumor	2.16.840.1.113883.2.4.3.11.60.40.4.10.1	ycT2a1
ycT2a2	ycT2a2	T_PrimaireTumor	2.16.840.1.113883.2.4.3.11.60.40.4.10.1	ycT2a2
ycT2b	ycT2b	T_PrimaireTumor	2.16.840.1.113883.2.4.3.11.60.40.4.10.1	ycT2b
ycT2c	ycT2c	T_PrimaireTumor	2.16.840.1.113883.2.4.3.11.60.40.4.10.1	ycT2c
ycT2d	ycT2d	T_PrimaireTumor	2.16.840.1.113883.2.4.3.11.60.40.4.10.1	ycT2d
ycT3	ycT3	T_PrimaireTumor	2.16.840.1.113883.2.4.3.11.60.40.4.10.1	ycT3
ycT3a	ycT3a	T_PrimaireTumor	2.16.840.1.113883.2.4.3.11.60.40.4.10.1	ycT3a
ycT3b	ycT3b	T_PrimaireTumor	2.16.840.1.113883.2.4.3.11.60.40.4.10.1	ycT3b
ycT3c	ycT3c	T_PrimaireTumor	2.16.840.1.113883.2.4.3.11.60.40.4.10.1	ycT3c
ycT3d	ycT3d	T_PrimaireTumor	2.16.840.1.113883.2.4.3.11.60.40.4.10.1	ycT3d
ycT3e	ycT3e	T_PrimaireTumor	2.16.840.1.113883.2.4.3.11.60.40.4.10.1	ycT3e
ycT4	ycT4	T_PrimaireTumor	2.16.840.1.113883.2.4.3.11.60.40.4.10.1	ycT4
ycT4a	ycT4a	T_PrimaireTumor	2.16.840.1.113883.2.4.3.11.60.40.4.10.1	ycT4a
ycT4b	ycT4b	T_PrimaireTumor	2.16.840.1.113883.2.4.3.11.60.40.4.10.1	ycT4b
ycT4c	ycT4c	T_PrimaireTumor	2.16.840.1.113883.2.4.3.11.60.40.4.10.1	ycT4c
ycT4d	ycT4d	T_PrimaireTumor	2.16.840.1.113883.2.4.3.11.60.40.4.10.1	ycT4d
ycT4e	ycT4e	T_PrimaireTumor	2.16.840.1.113883.2.4.3.11.60.40.4.10.1	ycT4e

«document»		pT_PrimaryTumorCodelist	
Definitie	De primaire tumor (T) voor een post chirurgische histologische pathologische classificatie. Dit is gebaseerd op de gegevens van voor de behandeling, aangevuld met pathologisch onderzoek na een heelkundig behandeling.		
Datatype			
DCM::ValueSetBinding	Extensible		
DCM::ValueSetId	2.16.840.1.113883.2.4.3.11.60.40.2.4.27.11		
Opties			

pTis (DCIS)	pTis (DCIS)	T_PrimaireTumor	2.16.840.1.113883.2.4.3.11.60.40.4.10.1	pTis (DCIS)
pTis (LAMN)	pTis (LAMN)	T_PrimaireTumor	2.16.840.1.113883.2.4.3.11.60.40.4.10.1	pTis (LAMN)
pTis (LCIS)	pTis (LCIS)	T_PrimaireTumor	2.16.840.1.113883.2.4.3.11.60.40.4.10.1	pTis (LCIS)
pTis (Paget)	pTis (Paget)	T_PrimaireTumor	2.16.840.1.113883.2.4.3.11.60.40.4.10.1	pTis (Paget)
pTis pu	pTis pu	T_PrimaireTumor	2.16.840.1.113883.2.4.3.11.60.40.4.10.1	pTis pu
pT1	pT1	T_PrimaireTumor	2.16.840.1.113883.2.4.3.11.60.40.4.10.1	pT1
pT1mi	pT1mi	T_PrimaireTumor	2.16.840.1.113883.2.4.3.11.60.40.4.10.1	pT1mi
pT1a	pT1a	T_PrimaireTumor	2.16.840.1.113883.2.4.3.11.60.40.4.10.1	pT1a
pT1a1	pT1a1	T_PrimaireTumor	2.16.840.1.113883.2.4.3.11.60.40.4.10.1	pT1a1
pT1a2	pT1a2	T_PrimaireTumor	2.16.840.1.113883.2.4.3.11.60.40.4.10.1	pT1a2
pT1b	pT1b	T_PrimaireTumor	2.16.840.1.113883.2.4.3.11.60.40.4.10.1	pT1b
pT1b1	pT1b1	T_PrimaireTumor	2.16.840.1.113883.2.4.3.11.60.40.4.10.1	pT1b1
pT1b2	pT1b2	T_PrimaireTumor	2.16.840.1.113883.2.4.3.11.60.40.4.10.1	pT1b2
pT1c	pT1c	T_PrimaireTumor	2.16.840.1.113883.2.4.3.11.60.40.4.10.1	pT1c
pT1c1	pT1c1	T_PrimaireTumor	2.16.840.1.113883.2.4.3.11.60.40.4.10.1	pT1c1
pT1c2	pT1c2	T_PrimaireTumor	2.16.840.1.113883.2.4.3.11.60.40.4.10.1	pT1c2
pT1c3	pT1c3	T_PrimaireTumor	2.16.840.1.113883.2.4.3.11.60.40.4.10.1	pT1c3
pT1d	pT1d	T_PrimaireTumor	2.16.840.1.113883.2.4.3.11.60.40.4.10.1	pT1d
pT2	pT2	T_PrimaireTumor	2.16.840.1.113883.2.4.3.11.60.40.4.10.1	pT2
pT2a	pT2a	T_PrimaireTumor	2.16.840.1.113883.2.4.3.11.60.40.4.10.1	pT2a
pT2a1	pT2a1	T_PrimaireTumor	2.16.840.1.113883.2.4.3.11.60.40.4.10.1	pT2a1
pT2a2	pT2a2	T_PrimaireTumor	2.16.840.1.113883.2.4.3.11.60.40.4.10.1	pT2a2
pT2b	pT2b	T_PrimaireTumor	2.16.840.1.113883.2.4.3.11.60.40.4.10.1	pT2b
pT2c	pT2c	T_PrimaireTumor	2.16.840.1.113883.2.4.3.11.60.40.4.10.1	pT2c
pT2d	pT2d	T_PrimaireTumor	2.16.840.1.113883.2.4.3.11.60.40.4.10.1	pT2d
pT3	pT3	T_PrimaireTumor	2.16.840.1.113883.2.4.3.11.60.40.4.10.1	pT3
pT3a	pT3a	T_PrimaireTumor	2.16.840.1.113883.2.4.3.11.60.40.4.10.1	pT3a
pT3b	pT3b	T_PrimaireTumor	2.16.840.1.113883.2.4.3.11.60.40.4.10.1	pT3b
pT3c	pT3c	T_PrimaireTumor	2.16.840.1.113883.2.4.3.11.60.40.4.10.1	pT3c
pT3d	pT3d	T_PrimaireTumor	2.16.840.1.113883.2.4.3.11.60.40.4.10.1	pT3d
pT4	pT4	T_PrimaireTumor	2.16.840.1.113883.2.4.3.11.60.40.4.10.1	pT4
pT4a	pT4a	T_PrimaireTumor	2.16.840.1.113883.2.4.3.11.60.40.4.10.1	pT4a
pT4b	pT4b	T_PrimaireTumor	2.16.840.1.113883.2.4.3.11.60.40.4.10.1	pT4b
pT4c	pT4c	T_PrimaireTumor	2.16.840.1.113883.2.4.3.11.60.40.4.10.1	pT4c
pT4d	pT4d	T_PrimaireTumor	2.16.840.1.113883.2.4.3.11.60.40.4.10.1	pT4d
pT4e	pT4e	T_PrimaireTumor	2.16.840.1.113883.2.4.3.11.60.40.4.10.1	pT4e

Concept Name	Concept Code	Coding System Name	Coding System OID	Description
ypTx	ypTx	T_PrimaireTumor	2.16.840.1.113883.2.4.3.11.60.40.4.10.1	ypTx
ypT0	ypT0	T_PrimaireTumor	2.16.840.1.113883.2.4.3.11.60.40.4.10.1	ypT0
ypTa	ypTa	T_PrimaireTumor	2.16.840.1.113883.2.4.3.11.60.40.4.10.1	ypTa
ypTis	ypTis	T_PrimaireTumor	2.16.840.1.113883.2.4.3.11.60.40.4.10.1	ypTis
ypTis (DCIS)	ypTis (DCIS)	T_PrimaireTumor	2.16.840.1.113883.2.4.3.11.60.40.4.10.1	ypTis (DCIS)
ypTis (LAMN)	ypTis (LAMN)	T_PrimaireTumor	2.16.840.1.113883.2.4.3.11.60.40.4.10.1	ypTis (LAMN)
ypTis (LCIS)	ypTis (LCIS)	T_PrimaireTumor	2.16.840.1.113883.2.4.3.11.60.40.4.10.1	ypTis (LCIS)
ypTis (Paget)	ypTis (Paget)	T_PrimaireTumor	2.16.840.1.113883.2.4.3.11.60.40.4.10.1	ypTis (Paget)
ypTis pu	ypTis pu	T_PrimaireTumor	2.16.840.1.113883.2.4.3.11.60.40.4.10.1	ypTis pu
ypT1	ypT1	T_PrimaireTumor	2.16.840.1.113883.2.4.3.11.60.40.4.10.1	ypT1
ypT1mi	ypT1mi	T_PrimaireTumor	2.16.840.1.113883.2.4.3.11.60.40.4.10.1	ypT1mi
ypT1a	ypT1a	T_PrimaireTumor	2.16.840.1.113883.2.4.3.11.60.40.4.10.1	ypT1a
ypT1a1	ypT1a1	T_PrimaireTumor	2.16.840.1.113883.2.4.3.11.60.40.4.10.1	ypT1a1
ypT1a2	ypT1a2	T_PrimaireTumor	2.16.840.1.113883.2.4.3.11.60.40.4.10.1	ypT1a2
ypT1b	ypT1b	T_PrimaireTumor	2.16.840.1.113883.2.4.3.11.60.40.4.10.1	ypT1b
ypT1b1	ypT1b1	T_PrimaireTumor	2.16.840.1.113883.2.4.3.11.60.40.4.10.1	ypT1b1
ypT1b2	ypT1b2	T_PrimaireTumor	2.16.840.1.113883.2.4.3.11.60.40.4.10.1	ypT1b2
ypT1c	ypT1c	T_PrimaireTumor	2.16.840.1.113883.2.4.3.11.60.40.4.10.1	ypT1c
ypT1c1	ypT1c1	T_PrimaireTumor	2.16.840.1.113883.2.4.3.11.60.40.4.10.1	ypT1c1
ypT1c2	ypT1c2	T_PrimaireTumor	2.16.840.1.113883.2.4.3.11.60.40.4.10.1	ypT1c2
ypT1c3	ypT1c3	T_PrimaireTumor	2.16.840.1.113883.2.4.3.11.60.40.4.10.1	ypT1c3
ypT1d	ypT1d	T_PrimaireTumor	2.16.840.1.113883.2.4.3.11.60.40.4.10.1	ypT1d
ypT2	ypT2	T_PrimaireTumor	2.16.840.1.113883.2.4.3.11.60.40.4.10.1	ypT2
ypT2a	ypT2a	T_PrimaireTumor	2.16.840.1.113883.2.4.3.11.60.40.4.10.1	ypT2a
ypT2a1	ypT2a1	T_PrimaireTumor	2.16.840.1.113883.2.4.3.11.60.40.4.10.1	ypT2a1
ypT2a2	ypT2a2	T_PrimaireTumor	2.16.840.1.113883.2.4.3.11.60.40.4.10.1	ypT2a2
ypT2b	ypT2b	T_PrimaireTumor	2.16.840.1.113883.2.4.3.11.60.40.4.10.1	ypT2b
ypT2c	ypT2c	T_PrimaireTumor	2.16.840.1.113883.2.4.3.11.60.40.4.10.1	ypT2c
ypT2d	ypT2d	T_PrimaireTumor	2.16.840.1.113883.2.4.3.11.60.40.4.10.1	ypT2d
ypT3	ypT3	T_PrimaireTumor	2.16.840.1.113883.2.4.3.11.60.40.4.10.1	ypT3
ypT3a	ypT3a	T_PrimaireTumor	2.16.840.1.113883.2.4.3.11.60.40.4.10.1	ypT3a
ypT3b	ypT3b	T_PrimaireTumor	2.16.840.1.113883.2.4.3.11.60.40.4.10.1	ypT3b
ypT3c	ypT3c	T_PrimaireTumor	2.16.840.1.113883.2.4.3.11.60.40.4.10.1	ypT3c
ypT3d	ypT3d	T_PrimaireTumor	2.16.840.1.113883.2.4.3.11.60.40.4.10.1	ypT3d
ypT4	ypT4	T_PrimaireTumor	2.16.840.1.113883.2.4.3.11.60.40.4.10.1	ypT4
ypT4a	ypT4a	T_PrimaireTumor	2.16.840.1.113883.2.4.3.11.60.40.4.10.1	ypT4a
ypT4b	ypT4b	T_PrimaireTumor	2.16.840.1.113883.2.4.3.11.60.40.4.10.1	ypT4b
ypT4c	ypT4c	T_PrimaireTumor	2.16.840.1.113883.2.4.3.11.60.40.4.10.1	ypT4c

	recidiverende tumor (na een ziektevrij interval).	
Datatype		
DCM::ValueSetBinding	Extensible	
DCM::ValueSetId	2.16.840.1.113883.2.4.3.11.60.40.2.4.27.13	
Opties		

rcT_PrimaireTumorCodelijst **OID: 2.16.840.1.113883.2.4.3.11.60.40.2.4.27.13**

Concept Name	Concept Code	Coding System Name	Coding System OID	Description
rcTx	rcTx	T_PrimaireTumor	2.16.840.1.113883.2.4.3.11.60.40.4.10.1	rcTx
rcT0	rcT0	T_PrimaireTumor	2.16.840.1.113883.2.4.3.11.60.40.4.10.1	rcT0
rcTa	rcTa	T_PrimaireTumor	2.16.840.1.113883.2.4.3.11.60.40.4.10.1	rcTa
rcTis	rcTis	T_PrimaireTumor	2.16.840.1.113883.2.4.3.11.60.40.4.10.1	rcTis
rcTis (DCIS)	rcTis (DCIS)	T_PrimaireTumor	2.16.840.1.113883.2.4.3.11.60.40.4.10.1	rcTis (DCIS)
rcTis (LAMN)	rcTis (LAMN)	T_PrimaireTumor	2.16.840.1.113883.2.4.3.11.60.40.4.10.1	rcTis (LAMN)
rcTis (LCIS)	rcTis (LCIS)	T_PrimaireTumor	2.16.840.1.113883.2.4.3.11.60.40.4.10.1	rcTis (LCIS)
rcTis (Paget)	rcTis (Paget)	T_PrimaireTumor	2.16.840.1.113883.2.4.3.11.60.40.4.10.1	rcTis (Paget)
rcTis pu	rcTis pu	T_PrimaireTumor	2.16.840.1.113883.2.4.3.11.60.40.4.10.1	rcTis pu
rcT1	rcT1	T_PrimaireTumor	2.16.840.1.113883.2.4.3.11.60.40.4.10.1	rcT1
rcT1mi	rcT1mi	T_PrimaireTumor	2.16.840.1.113883.2.4.3.11.60.40.4.10.1	rcT1mi
rcT1a	rcT1a	T_PrimaireTumor	2.16.840.1.113883.2.4.3.11.60.40.4.10.1	rcT1a
rcT1a1	rcT1a1	T_PrimaireTumor	2.16.840.1.113883.2.4.3.11.60.40.4.10.1	rcT1a1
rcT1a2	rcT1a2	T_PrimaireTumor	2.16.840.1.113883.2.4.3.11.60.40.4.10.1	rcT1a2
rcT1b	rcT1b	T_PrimaireTumor	2.16.840.1.113883.2.4.3.11.60.40.4.10.1	rcT1b
rcT1b1	rcT1b1	T_PrimaireTumor	2.16.840.1.113883.2.4.3.11.60.40.4.10.1	rcT1b1
rcT1b2	rcT1b2	T_PrimaireTumor	2.16.840.1.113883.2.4.3.11.60.40.4.10.1	rcT1b2
rcT1c	rcT1c	T_PrimaireTumor	2.16.840.1.113883.2.4.3.11.60.40.4.10.1	rcT1c
rcT1c1	rcT1c1	T_PrimaireTumor	2.16.840.1.113883.2.4.3.11.60.40.4.10.1	rcT1c1
rcT1c2	rcT1c2	T_PrimaireTumor	2.16.840.1.113883.2.4.3.11.60.40.4.10.1	rcT1c2
rcT1c3	rcT1c3	T_PrimaireTumor	2.16.840.1.113883.2.4.3.11.60.40.4.10.1	rcT1c3
rcT1d	rcT1d	T_PrimaireTumor	2.16.840.1.113883.2.4.3.11.60.40.4.10.1	rcT1d
rcT2	rcT2	T_PrimaireTumor	2.16.840.1.113883.2.4.3.11.60.40.4.10.1	rcT2
rcT2a	rcT2a	T_PrimaireTumor	2.16.840.1.113883.2.4.3.11.60.40.4.10.1	rcT2a
rcT2a1	rcT2a1	T_PrimaireTumor	2.16.840.1.113883.2.4.3.11.60.40.4.10.1	rcT2a1
rcT2a2	rcT2a2	T_PrimaireTumor	2.16.840.1.113883.2.4.3.11.60.40.4.10.1	rcT2a2
rcT2b	rcT2b	T_PrimaireTumor	2.16.840.1.113883.2.4.3.11.60.40.4.10.1	rcT2b
rcT2c	rcT2c	T_PrimaireTumor	2.16.840.1.113883.2.4.3.11.60.40.4.10.1	rcT2c
rcT2d	rcT2d	T_PrimaireTumor	2.16.840.1.113883.2.4.3.11.60.40.4.10.1	rcT2d
rcT3	rcT3	T_PrimaireTumor	2.16.840.1.113883.2.4.3.11.60.40.4.10.1	rcT3
rcT3a	rcT3a	T_PrimaireTumor	2.16.840.1.113883.2.4.3.11.60.40.4.10.1	rcT3a
rcT3b	rcT3b	T_PrimaireTumor	2.16.840.1.113883.2.4.3.11.60.40.4.10.1	rcT3b

rcT4d	rcT4d	T_PrimaireTumor	2.16.840.1.113883.2.4.3.11.60.40.4.10.1	rcT4d
rcT4e	rcT4e	T_PrimaireTumor	2.16.840.1.113883.2.4.3.11.60.40.4.10.1	rcT4e

«document»		rpT_PrimaryTumorCodelist		
Definitie	De primaire tumor (T) voor een post chirurgische pathologische classificatie in geval van een recidiverende tumor (na een ziektevrij interval).			
Datatype				
DCM::ValueSetBinding	Extensible			
DCM::ValueSetId	2.16.840.1.113883.2.4.3.11.60.40.2.4.27.14			
Opties				

rpT_PrimaireTumorCodelijst OID: 2.16.840.1.113883.2.4.3.11.60.40.2.4.27.14

Concept Name	Concept Code	Coding System Name	Coding System OID	Description
rpTx	rpTx	T_PrimaireTumor	2.16.840.1.113883.2.4.3.11.60.40.4.10.1	rpTx
rpT0	rpT0	T_PrimaireTumor	2.16.840.1.113883.2.4.3.11.60.40.4.10.1	rpT0
rpTa	rpTa	T_PrimaireTumor	2.16.840.1.113883.2.4.3.11.60.40.4.10.1	rpTa
rpTis	rpTis	T_PrimaireTumor	2.16.840.1.113883.2.4.3.11.60.40.4.10.1	rpTis
rpTis (DCIS)	rpTis (DCIS)	T_PrimaireTumor	2.16.840.1.113883.2.4.3.11.60.40.4.10.1	rpTis (DCIS)
rpTis (LAMN)	rpTis (LAMN)	T_PrimaireTumor	2.16.840.1.113883.2.4.3.11.60.40.4.10.1	rpTis (LAMN)
rpTis (LCIS)	rpTis (LCIS)	T_PrimaireTumor	2.16.840.1.113883.2.4.3.11.60.40.4.10.1	rpTis (LCIS)
rpTis (Paget)	rpTis (Paget)	T_PrimaireTumor	2.16.840.1.113883.2.4.3.11.60.40.4.10.1	rpTis (Paget)
rpTis pu	rpTis pu	T_PrimaireTumor	2.16.840.1.113883.2.4.3.11.60.40.4.10.1	rpTis pu
rpT1	rpT1	T_PrimaireTumor	2.16.840.1.113883.2.4.3.11.60.40.4.10.1	rpT1
rpT1mi	rpT1mi	T_PrimaireTumor	2.16.840.1.113883.2.4.3.11.60.40.4.10.1	rpT1mi
rpT1a	rpT1a	T_PrimaireTumor	2.16.840.1.113883.2.4.3.11.60.40.4.10.1	rpT1a
rpT1a1	rpT1a1	T_PrimaireTumor	2.16.840.1.113883.2.4.3.11.60.40.4.10.1	rpT1a1
rpT1a2	rpT1a2	T_PrimaireTumor	2.16.840.1.113883.2.4.3.11.60.40.4.10.1	rpT1a2
rpT1b	rpT1b	T_PrimaireTumor	2.16.840.1.113883.2.4.3.11.60.40.4.10.1	rpT1b
rpT1b1	rpT1b1	T_PrimaireTumor	2.16.840.1.113883.2.4.3.11.60.40.4.10.1	rpT1b1
rpT1b2	rpT1b2	T_PrimaireTumor	2.16.840.1.113883.2.4.3.11.60.40.4.10.1	rpT1b2
rpT1c	rpT1c	T_PrimaireTumor	2.16.840.1.113883.2.4.3.11.60.40.4.10.1	rpT1c
rpT1c1	rpT1c1	T_PrimaireTumor	2.16.840.1.113883.2.4.3.11.60.40.4.10.1	rpT1c1
rpT1c2	rpT1c2	T_PrimaireTumor	2.16.840.1.113883.2.4.3.11.60.40.4.10.1	rpT1c2
rpT1c3	rpT1c3	T_PrimaireTumor	2.16.840.1.113883.2.4.3.11.60.40.4.10.1	rpT1c3
rpT1d	rpT1d	T_PrimaireTumor	2.16.840.1.113883.2.4.3.11.60.40.4.10.1	rpT1d
rpT2	rpT2	T_PrimaireTumor	2.16.840.1.113883.2.4.3.11.60.40.4.10.1	rpT2
rpT2a	rpT2a	T_PrimaireTumor	2.16.840.1.113883.2.4.3.11.60.40.4.10.1	rpT2a
rpT2a1	rpT2a1	T_PrimaireTumor	2.16.840.1.113883.2.4.3.11.60.40.4.10.1	rpT2a1

rpT3d	rpT3d	T_PrimaireTumor	2.16.840.1.113883.2.4.3.11.60.40.4.10.1	rpT3d
rpT4	rpT4	T_PrimaireTumor	2.16.840.1.113883.2.4.3.11.60.40.4.10.1	rpT4
rpT4a	rpT4a	T_PrimaireTumor	2.16.840.1.113883.2.4.3.11.60.40.4.10.1	rpT4a
rpT4b	rpT4b	T_PrimaireTumor	2.16.840.1.113883.2.4.3.11.60.40.4.10.1	rpT4b
rpT4c	rpT4c	T_PrimaireTumor	2.16.840.1.113883.2.4.3.11.60.40.4.10.1	rpT4c
rpT4d	rpT4d	T_PrimaireTumor	2.16.840.1.113883.2.4.3.11.60.40.4.10.1	rpT4d
rpT4e	rpT4e	T_PrimaireTumor	2.16.840.1.113883.2.4.3.11.60.40.4.10.1	rpT4e

«document»		aT_PrimaryTumorCodelist	
Definitie	De primaire tumor (T) voor een classificatie vastgesteld tijdens autopsie		
Datatype			
DCM::ValueSetBinding	Extensible		
DCM::ValueSetId	2.16.840.1.113883.2.4.3.11.60.40.2.4.27.15		
Opties			

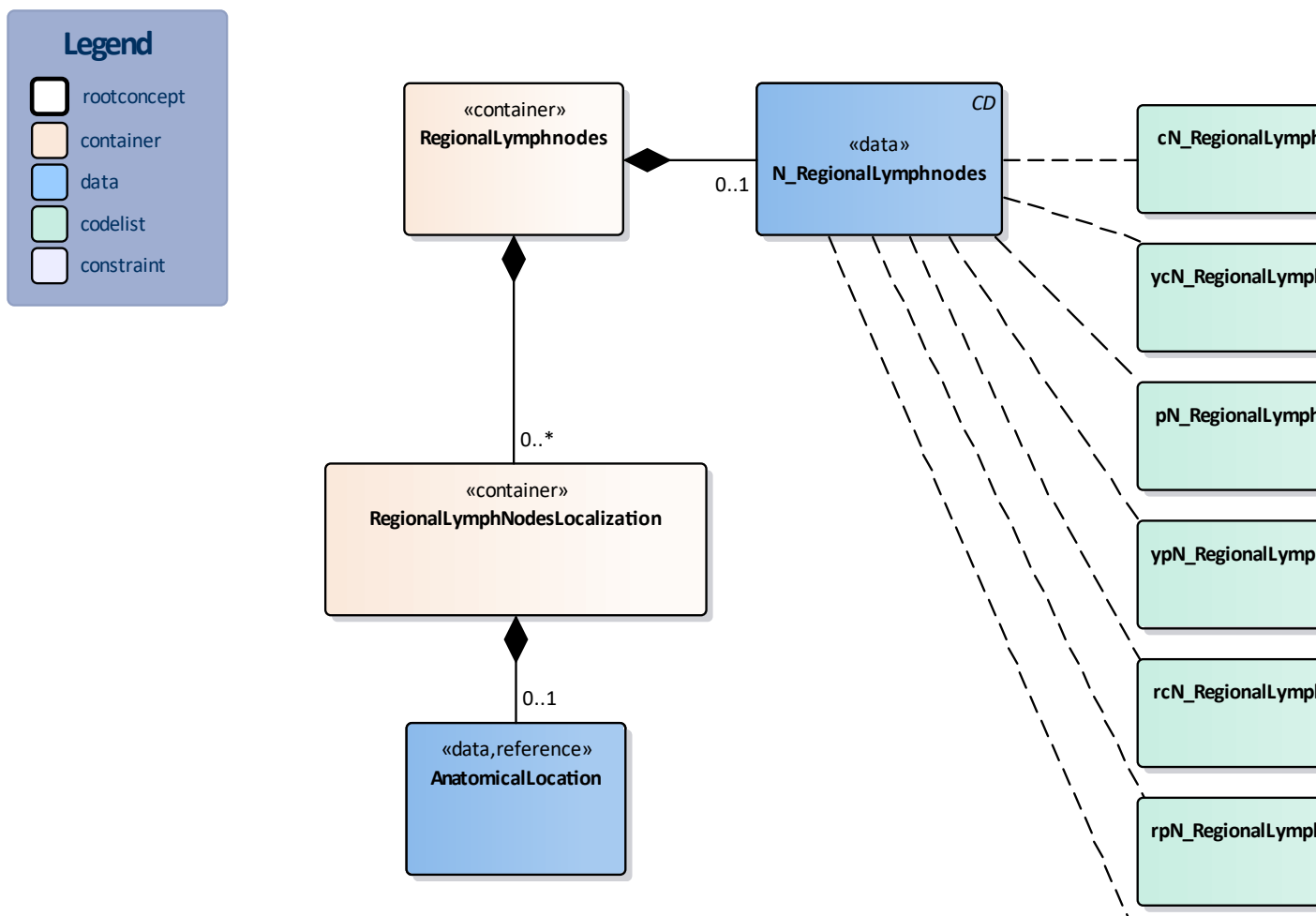
aT_PrimaireTumorCodelijst		OID: 2.16.840.1.113883.2.4.3.11.60.40.2.4.27.15	
---------------------------	--	---	--

Concept Name	Concept Code	Coding System Name	Coding System OID	Description
aTx	aTx	T_PrimaireTumor	2.16.840.1.113883.2.4.3.11.60.40.4.10.1	aTx
aT0	aT0	T_PrimaireTumor	2.16.840.1.113883.2.4.3.11.60.40.4.10.1	aT0
aTa	aTa	T_PrimaireTumor	2.16.840.1.113883.2.4.3.11.60.40.4.10.1	aTa
aTis	aTis	T_PrimaireTumor	2.16.840.1.113883.2.4.3.11.60.40.4.10.1	aTis
aTis (DCIS)	aTis (DCIS)	T_PrimaireTumor	2.16.840.1.113883.2.4.3.11.60.40.4.10.1	aTis (DCIS)
aTis (LAMN)	aTis (LAMN)	T_PrimaireTumor	2.16.840.1.113883.2.4.3.11.60.40.4.10.1	aTis (LAMN)
aTis (LCIS)	aTis (LCIS)	T_PrimaireTumor	2.16.840.1.113883.2.4.3.11.60.40.4.10.1	aTis (LCIS)
aTis (Paget)	aTis (Paget)	T_PrimaireTumor	2.16.840.1.113883.2.4.3.11.60.40.4.10.1	aTis (Paget)
aTis pu	aTis pu	T_PrimaireTumor	2.16.840.1.113883.2.4.3.11.60.40.4.10.1	aTis pu
aT1	aT1	T_PrimaireTumor	2.16.840.1.113883.2.4.3.11.60.40.4.10.1	aT1
aT1mi	aT1mi	T_PrimaireTumor	2.16.840.1.113883.2.4.3.11.60.40.4.10.1	aT1mi
aT1a	aT1a	T_PrimaireTumor	2.16.840.1.113883.2.4.3.11.60.40.4.10.1	aT1a
aT1a1	aT1a1	T_PrimaireTumor	2.16.840.1.113883.2.4.3.11.60.40.4.10.1	aT1a1
aT1a2	aT1a2	T_PrimaireTumor	2.16.840.1.113883.2.4.3.11.60.40.4.10.1	aT1a2
aT1b	aT1b	T_PrimaireTumor	2.16.840.1.113883.2.4.3.11.60.40.4.10.1	aT1b
aT1b1	aT1b1	T_PrimaireTumor	2.16.840.1.113883.2.4.3.11.60.40.4.10.1	aT1b1
aT1b2	aT1b2	T_PrimaireTumor	2.16.840.1.113883.2.4.3.11.60.40.4.10.1	aT1b2
aT1c	aT1c	T_PrimaireTumor	2.16.840.1.113883.2.4.3.11.60.40.4.10.1	aT1c
aT1c1	aT1c1	T_PrimaireTumor	2.16.840.1.113883.2.4.3.11.60.40.4.10.1	aT1c1
aT1c2	aT1c2	T_PrimaireTumor	2.16.840.1.113883.2.4.3.11.60.40.4.10.1	aT1c2
aT1c3	aT1c3	T_PrimaireTumor	2.16.840.1.113883.2.4.3.11.60.40.4.10.1	aT1c3
aT1d	aT1d	T_PrimaireTumor	2.16.840.1.113883.2.4.3.11.60.40.4.10.1	aT1d

aT3a	aT3a	T_PrimaireTumor	2.16.840.1.113883.2.4.3.11.60.40.4.10.1	aT3a
aT3b	aT3b	T_PrimaireTumor	2.16.840.1.113883.2.4.3.11.60.40.4.10.1	aT3b
aT3c	aT3c	T_PrimaireTumor	2.16.840.1.113883.2.4.3.11.60.40.4.10.1	aT3c
aT3d	aT3d	T_PrimaireTumor	2.16.840.1.113883.2.4.3.11.60.40.4.10.1	aT3d
aT3e	aT3e	T_PrimaireTumor	2.16.840.1.113883.2.4.3.11.60.40.4.10.1	aT3e
aT4	aT4	T_PrimaireTumor	2.16.840.1.113883.2.4.3.11.60.40.4.10.1	aT4
aT4a	aT4a	T_PrimaireTumor	2.16.840.1.113883.2.4.3.11.60.40.4.10.1	aT4a
aT4b	aT4b	T_PrimaireTumor	2.16.840.1.113883.2.4.3.11.60.40.4.10.1	aT4b
aT4c	aT4c	T_PrimaireTumor	2.16.840.1.113883.2.4.3.11.60.40.4.10.1	aT4c
aT4d	aT4d	T_PrimaireTumor	2.16.840.1.113883.2.4.3.11.60.40.4.10.1	aT4d
aT4e	aT4e	T_PrimaireTumor	2.16.840.1.113883.2.4.3.11.60.40.4.10.1	aT4e

Legend	
Definitie	
Datatype	
Opties	

1.7.2 Regionallymphnodes



DCM::DefinitionCode	SNOMED CT: 301855007 Finding of lymph node	
Opties		

«data»	N_RegionalLymphnodes	
Definitie	Staging result of the presence or absence of regional lymph nodes metastasis, the N-category of the TNM classification. 	
Datatype	CD	
DCM::ConceptId	NL-CM:4.27.22	
DCM::DefinitionCode	SNOMED CT: 277206009 N category	
DCM::ValueSet	ycN_RegionalLymphnodesCo delist	OID: 2.16.840.1.113883.2.4.3.11.60.40.2.4.27
DCM::ValueSet	pN_RegionalLymphnodesCo delist	OID: 2.16.840.1.113883.2.4.3.11.60.40.2.4.27
DCM::ValueSet	aN_RegionalLymphnodesCod elist	OID: 2.16.840.1.113883.2.4.3.11.60.40.2.4.27
DCM::ValueSet	cN_RegionalLymphnodesCod elist	OID: 2.16.840.1.113883.2.4.3.11.60.40.2.4.27
DCM::ValueSet	rcN_RegionalLymphnodesCo delist	OID: 2.16.840.1.113883.2.4.3.11.60.40.2.4.27
DCM::ValueSet	ypN_RegionalLymphnodesCo delist	OID: 2.16.840.1.113883.2.4.3.11.60.40.2.4.27
DCM::ValueSet	rpN_RegionalLymphnodesCo delist	OID: 2.16.840.1.113883.2.4.3.11.60.40.2.4.27
Opties		

«container»	RegionallymphNodesLocalization	
Definitie	Container of the RegionallymphNodesLocalization concept.This contain contains all data elements of the RegionallymphNodesLocalization concept.	
Datatype		
DCM::ConceptId	NL-CM:4.27.23	
DCM::DefinitionCode	SNOMED CT: 364108009 Lymph node observable	
Opties		

«data»	AnatomicalLocation	
Definitie	Contains the localization(s) of the positive regional lymph nodes, cause the primary tumor.	
Datatype		
DCM::ConceptId	NL-CM:4.27.24	
DCM::DefinitionCode	SNOMED CT: 397440000 Finding site	
DCM::ReferencedConceptId	NL-CM:20.7.1	This is a reference to the rootconcept of information model AnatomicalLocation.

DCM::ValueSetId	2.16.840.1.113883.2.4.3.11.60.40.2.4.27.18			
Opties				
cN_RegionaleLymfeklierenCodelijst			OID: 2.16.840.1.113883.2.4.3.11.60.40.2.4.27.18	
Concept Name	Concept Code	Coding System Name	Coding System OID	Description
cNX	cNX	N_RegionaleLymfeklieren	2.16.840.1.113883.2.4.3.11.60.40.4.10.2	cNX
cNX(f)	cNX(f)	N_RegionaleLymfeklieren	2.16.840.1.113883.2.4.3.11.60.40.4.10.2	cNX(f)
cNX(sn)	cNX(sn)	N_RegionaleLymfeklieren	2.16.840.1.113883.2.4.3.11.60.40.4.10.2	cNX(sn)
cNO	cNO	N_RegionaleLymfeklieren	2.16.840.1.113883.2.4.3.11.60.40.4.10.2	cNO
cNO(f)	cNO(f)	N_RegionaleLymfeklieren	2.16.840.1.113883.2.4.3.11.60.40.4.10.2	cNO(f)
cNO(sn)	cNO(sn)	N_RegionaleLymfeklieren	2.16.840.1.113883.2.4.3.11.60.40.4.10.2	cNO(sn)
cNO(i-)	cNO(i-)	N_RegionaleLymfeklieren	2.16.840.1.113883.2.4.3.11.60.40.4.10.2	cNO(i-)
cNO(i-)(sn)	cNO(i-)(sn)	N_RegionaleLymfeklieren	2.16.840.1.113883.2.4.3.11.60.40.4.10.2	cNO(i-)(sn)
cNO(i+)	cNO(i+)	N_RegionaleLymfeklieren	2.16.840.1.113883.2.4.3.11.60.40.4.10.2	cNO(i+)
cNO(i+)(sn)	cNO(i+)(sn)	N_RegionaleLymfeklieren	2.16.840.1.113883.2.4.3.11.60.40.4.10.2	cNO(i+)(sn)
cNO(mol-)	cNO(mol-)	N_RegionaleLymfeklieren	2.16.840.1.113883.2.4.3.11.60.40.4.10.2	cNO(mol-)
cNO(mol-)(sn)	cNO(mol-)(sn)	N_RegionaleLymfeklieren	2.16.840.1.113883.2.4.3.11.60.40.4.10.2	cNO(mol-)(sn)
cNO(mol+)	cNO(mol+)	N_RegionaleLymfeklieren	2.16.840.1.113883.2.4.3.11.60.40.4.10.2	cNO(mol+)
cNO(mol+)(sn)	cNO(mol+)(sn)	N_RegionaleLymfeklieren	2.16.840.1.113883.2.4.3.11.60.40.4.10.2	cNO(mol+)(sn)
cN1	cN1	N_RegionaleLymfeklieren	2.16.840.1.113883.2.4.3.11.60.40.4.10.2	cN1
cN1(f)	cN1(f)	N_RegionaleLymfeklieren	2.16.840.1.113883.2.4.3.11.60.40.4.10.2	cN1(f)
cN1(sn)	cN1(sn)	N_RegionaleLymfeklieren	2.16.840.1.113883.2.4.3.11.60.40.4.10.2	cN1(sn)
cN1mi	cN1mi	N_RegionaleLymfeklieren	2.16.840.1.113883.2.4.3.11.60.40.4.10.2	cN1mi
cN1mi(f)	cN1mi(f)	N_RegionaleLymfeklieren	2.16.840.1.113883.2.4.3.11.60.40.4.10.2	cN1mi(f)
cN1mi(sn)	cN1mi(sn)	N_RegionaleLymfeklieren	2.16.840.1.113883.2.4.3.11.60.40.4.10.2	cN1mi(sn)
cN1a	cN1a	N_RegionaleLymfeklieren	2.16.840.1.113883.2.4.3.11.60.40.4.10.2	cN1a

cN1b(sn)	cN1b(sn)	N_RegionaleLymfeklieren	2.16.840.1.113883.2.4.3.11.60.40.4.10.2	cN1b(sn)
cN1c	cN1c	N_RegionaleLymfeklieren	2.16.840.1.113883.2.4.3.11.60.40.4.10.2	cN1c
cN1c(f)	cN1c(f)	N_RegionaleLymfeklieren	2.16.840.1.113883.2.4.3.11.60.40.4.10.2	cN1c(f)
cN1c(sn)	cN1c(sn)	N_RegionaleLymfeklieren	2.16.840.1.113883.2.4.3.11.60.40.4.10.2	cN1c(sn)
cN2	cN2	N_RegionaleLymfeklieren	2.16.840.1.113883.2.4.3.11.60.40.4.10.2	cN2
cN2(f)	cN2(f)	N_RegionaleLymfeklieren	2.16.840.1.113883.2.4.3.11.60.40.4.10.2	cN2(f)
cN2(sn)	cN2(sn)	N_RegionaleLymfeklieren	2.16.840.1.113883.2.4.3.11.60.40.4.10.2	cN2(sn)
cN2a	cN2a	N_RegionaleLymfeklieren	2.16.840.1.113883.2.4.3.11.60.40.4.10.2	cN2a
cN2a(f)	cN2a(f)	N_RegionaleLymfeklieren	2.16.840.1.113883.2.4.3.11.60.40.4.10.2	cN2a(f)
cN2a(sn)	cN2a(sn)	N_RegionaleLymfeklieren	2.16.840.1.113883.2.4.3.11.60.40.4.10.2	cN2a(sn)
cN2b	cN2b	N_RegionaleLymfeklieren	2.16.840.1.113883.2.4.3.11.60.40.4.10.2	cN2b
cN2b(f)	cN2b(f)	N_RegionaleLymfeklieren	2.16.840.1.113883.2.4.3.11.60.40.4.10.2	cN2b(f)
cN2b(sn)	cN2b(sn)	N_RegionaleLymfeklieren	2.16.840.1.113883.2.4.3.11.60.40.4.10.2	cN2b(sn)
cN2c	cN2c	N_RegionaleLymfeklieren	2.16.840.1.113883.2.4.3.11.60.40.4.10.2	cN2c
cN2c(f)	cN2c(f)	N_RegionaleLymfeklieren	2.16.840.1.113883.2.4.3.11.60.40.4.10.2	cN2c(f)
cN2c(sn)	cN2c(sn)	N_RegionaleLymfeklieren	2.16.840.1.113883.2.4.3.11.60.40.4.10.2	cN2c(sn)
cN3	cN3	N_RegionaleLymfeklieren	2.16.840.1.113883.2.4.3.11.60.40.4.10.2	cN3
cN3(f)	cN3(f)	N_RegionaleLymfeklieren	2.16.840.1.113883.2.4.3.11.60.40.4.10.2	cN3(f)
cN3(sn)	cN3(sn)	N_RegionaleLymfeklieren	2.16.840.1.113883.2.4.3.11.60.40.4.10.2	cN3(sn)
cN3a	cN3a	N_RegionaleLymfeklieren	2.16.840.1.113883.2.4.3.11.60.40.4.10.2	cN3a
cN3a(f)	cN3a(f)	N_RegionaleLymfeklieren	2.16.840.1.113883.2.4.3.11.60.40.4.10.2	cN3a(f)
cN3a(sn)	cN3a(sn)	N_RegionaleLymfeklieren	2.16.840.1.113883.2.4.3.11.60.40.4.10.2	cN3a(sn)
cN3b	cN3b	N_RegionaleLymfeklieren	2.16.840.1.113883.2.4.3.11.60.40.4.10.2	cN3b
cN3b(f)	cN3b(f)	N_RegionaleLymfeklieren	2.16.840.1.113883.2.4.3.11.60.40.4.10.2	cN3b(f)
cN3b(sn)	cN3b(sn)	N_RegionaleLymfeklieren	2.16.840.1.113883.2.4.3.11.60.40.4.10.2	cN3b(sn)

«document»	ycN_RegionalLymphnodesCodelist	
Definitie	De uitbreiding naar regionale lymfeklieren (N) voor een klinische classificatie uitgevoerd tijdens of na een initiële multimodaliteitsbehandeling (zijnde niet- chirurgisch).	
Datatype		
DCM::ValueSetBinding	Extensible	
DCM::ValueSetId	2.16.840.1.113883.2.4.3.11.60.40.2.4.27.19	
Opties		

ycN_RegionaleLymfeklierenCodelijst	OID: 2.16.840.1.113883.2.4.3.11.60.40.2.4.27.19
---	--

Concept Name	Concept Code	Coding System Name	Coding System OID	Description
ycNX	ycNX	N_Regionale Lymfeklieren	2.16.840.1.113883.2.4.3.11.60.40.4.10.2	ycNX
ycNX(f)	ycNX(f)	N_Regionale Lymfeklieren	2.16.840.1.113883.2.4.3.11.60.40.4.10.2	ycNX(f)
ycNX(sn)	ycNX(sn)	N_Regionale Lymfeklieren	2.16.840.1.113883.2.4.3.11.60.40.4.10.2	ycNX(sn)
ycN0	ycN0	N_Regionale Lymfeklieren	2.16.840.1.113883.2.4.3.11.60.40.4.10.2	ycN0
ycN0(f)	ycN0(f)	N_Regionale Lymfeklieren	2.16.840.1.113883.2.4.3.11.60.40.4.10.2	ycN0(f)
ycN0(sn)	ycN0(sn)	N_Regionale Lymfeklieren	2.16.840.1.113883.2.4.3.11.60.40.4.10.2	ycN0(sn)
ycN0(i-)	ycN0(i-)	N_Regionale Lymfeklieren	2.16.840.1.113883.2.4.3.11.60.40.4.10.2	ycN0(i-)
ycN0(i-)(sn)	ycN0(i-)(sn)	N_Regionale Lymfeklieren	2.16.840.1.113883.2.4.3.11.60.40.4.10.2	ycN0(i-)(sn)
ycN0(i+)	ycN0(i+)	N_Regionale Lymfeklieren	2.16.840.1.113883.2.4.3.11.60.40.4.10.2	ycN0(i+)
ycN0(i+)(sn)	ycN0(i+)(sn)	N_Regionale Lymfeklieren	2.16.840.1.113883.2.4.3.11.60.40.4.10.2	ycN0(i+)(sn)
ycN0(mol-)	ycN0(mol-)	N_Regionale Lymfeklieren	2.16.840.1.113883.2.4.3.11.60.40.4.10.2	ycN0(mol-)
ycN0(mol-)(sn)	ycN0(mol-)(sn)	N_Regionale Lymfeklieren	2.16.840.1.113883.2.4.3.11.60.40.4.10.2	ycN0(mol-)(sn)
ycN0(mol+)	ycN0(mol+)	N_Regionale Lymfeklieren	2.16.840.1.113883.2.4.3.11.60.40.4.10.2	ycN0(mol+)
ycN0(mol+)(sn)	ycN0(mol+)(sn)	N_Regionale Lymfeklieren	2.16.840.1.113883.2.4.3.11.60.40.4.10.2	ycN0(mol+)(sn)
ycN1	ycN1	N_Regionale Lymfeklieren	2.16.840.1.113883.2.4.3.11.60.40.4.10.2	ycN1
ycN1(f)	ycN1(f)	N_Regionale Lymfeklieren	2.16.840.1.113883.2.4.3.11.60.40.4.10.2	ycN1(f)
ycN1(sn)	ycN1(sn)	N_Regionale Lymfeklieren	2.16.840.1.113883.2.4.3.11.60.40.4.10.2	ycN1(sn)

ycN1a(sn)	ycN1a(sn)	N_Regionale Lymfeklieren	2.16.840.1.113883.2.4.3.11.60.40.4.10.2	ycN1a(sn)
ycN1b	ycN1b	N_Regionale Lymfeklieren	2.16.840.1.113883.2.4.3.11.60.40.4.10.2	ycN1b
ycN1b(f)	ycN1b(f)	N_Regionale Lymfeklieren	2.16.840.1.113883.2.4.3.11.60.40.4.10.2	ycN1b(f)
ycN1b(sn)	ycN1b(sn)	N_Regionale Lymfeklieren	2.16.840.1.113883.2.4.3.11.60.40.4.10.2	ycN1b(sn)
ycN1c	ycN1c	N_Regionale Lymfeklieren	2.16.840.1.113883.2.4.3.11.60.40.4.10.2	ycN1c
ycN1c(f)	ycN1c(f)	N_Regionale Lymfeklieren	2.16.840.1.113883.2.4.3.11.60.40.4.10.2	ycN1c(f)
ycN1c(sn)	ycN1c(sn)	N_Regionale Lymfeklieren	2.16.840.1.113883.2.4.3.11.60.40.4.10.2	ycN1c(sn)
ycN2	ycN2	N_Regionale Lymfeklieren	2.16.840.1.113883.2.4.3.11.60.40.4.10.2	ycN2
ycN2(f)	ycN2(f)	N_Regionale Lymfeklieren	2.16.840.1.113883.2.4.3.11.60.40.4.10.2	ycN2(f)
ycN2(sn)	ycN2(sn)	N_Regionale Lymfeklieren	2.16.840.1.113883.2.4.3.11.60.40.4.10.2	ycN2(sn)
ycN2a	ycN2a	N_Regionale Lymfeklieren	2.16.840.1.113883.2.4.3.11.60.40.4.10.2	ycN2a
ycN2a(f)	ycN2a(f)	N_Regionale Lymfeklieren	2.16.840.1.113883.2.4.3.11.60.40.4.10.2	ycN2a(f)
ycN2a(sn)	ycN2a(sn)	N_Regionale Lymfeklieren	2.16.840.1.113883.2.4.3.11.60.40.4.10.2	ycN2a(sn)
ycN2b	ycN2b	N_Regionale Lymfeklieren	2.16.840.1.113883.2.4.3.11.60.40.4.10.2	ycN2b
ycN2b(f)	ycN2b(f)	N_Regionale Lymfeklieren	2.16.840.1.113883.2.4.3.11.60.40.4.10.2	ycN2b(f)
ycN2b(sn)	ycN2b(sn)	N_Regionale Lymfeklieren	2.16.840.1.113883.2.4.3.11.60.40.4.10.2	ycN2b(sn)
ycN2c	ycN2c	N_Regionale Lymfeklieren	2.16.840.1.113883.2.4.3.11.60.40.4.10.2	ycN2c
ycN2c(f)	ycN2c(f)	N_Regionale Lymfeklieren	2.16.840.1.113883.2.4.3.11.60.40.4.10.2	ycN2c(f)
ycN2c(sn)	ycN2c(sn)	N_Regionale Lymfeklieren	2.16.840.1.113883.2.4.3.11.60.40.4.10.2	ycN2c(sn)
ycN3	ycN3	N_Regionale Lymfeklieren	2.16.840.1.113883.2.4.3.11.60.40.4.10.2	ycN3
ycN3(f)	ycN3(f)	N_Regionale Lymfeklieren	2.16.840.1.113883.2.4.3.11.60.40.4.10.2	ycN3(f)
ycN3(sn)	ycN3(sn)	N_Regionale Lymfeklieren	2.16.840.1.113883.2.4.3.11.60.40.4.10.2	ycN3(sn)
ycN3a	ycN3a	N_Regionale Lymfeklieren	2.16.840.1.113883.2.4.3.11.60.40.4.10.2	ycN3a
ycN3a(f)	ycN3a(f)	N_Regionale Lymfeklieren	2.16.840.1.113883.2.4.3.11.60.40.4.10.2	ycN3a(f)
ycN3a(sn)	ycN3a(sn)	N_Regionale Lymfeklieren	2.16.840.1.113883.2.4.3.11.60.40.4.10.2	ycN3a(sn)

ycN3c(f)	ycN3c(f)	N_Regionale Lymfeklieren	2.16.840.1.113883.2.4.3.11.60.40.4.10.2	ycN3c(f)
ycN3c(sn)	ycN3c(sn)	N_Regionale Lymfeklieren	2.16.840.1.113883.2.4.3.11.60.40.4.10.2	ycN3c(sn)

«document»		pN_RegionalLymphnodesCodelist		
Definitie	De uitbreiding naar regionale lymfeklieren (N) voor een postchirurgisch histologische pathologische classificatie. Dit is gebaseerd op de gegevens van voor de behandeling, aangevuld met pathologisch onderzoek na een heelkundige behandeling.			
Datatype				
DCM::ValueSetBinding	Extensible			
DCM::ValueSetId	2.16.840.1.113883.2.4.3.11.60.40.2.4.27.20			
Opties				

pN_RegionaleLymfeklierenCodelijst **OID: 2.16.840.1.113883.2.4.3.11.60.40.2.4.27.20**

Concept Name	Concept Code	Coding System Name	Coding System OID	Description
pNX	pNX	N_Regionale Lymfeklieren	2.16.840.1.113883.2.4.3.11.60.40.4.10.2	pNX
pNX(f)	pNX(f)	N_Regionale Lymfeklieren	2.16.840.1.113883.2.4.3.11.60.40.4.10.2	pNX(f)
pNX(sn)	pNX(sn)	N_Regionale Lymfeklieren	2.16.840.1.113883.2.4.3.11.60.40.4.10.2	pNX(sn)
pNO	pNO	N_Regionale Lymfeklieren	2.16.840.1.113883.2.4.3.11.60.40.4.10.2	pNO
pNO(f)	pNO(f)	N_Regionale Lymfeklieren	2.16.840.1.113883.2.4.3.11.60.40.4.10.2	pNO(f)
pNO(sn)	pNO(sn)	N_Regionale Lymfeklieren	2.16.840.1.113883.2.4.3.11.60.40.4.10.2	pNO(sn)
pNO(i-)	pNO(i-)	N_Regionale Lymfeklieren	2.16.840.1.113883.2.4.3.11.60.40.4.10.2	pNO(i-)
pNO(i-)(sn)	pNO(i-)(sn)	N_Regionale Lymfeklieren	2.16.840.1.113883.2.4.3.11.60.40.4.10.2	pNO(i-)(sn)
pNO(i+)	pNO(i+)	N_Regionale Lymfeklieren	2.16.840.1.113883.2.4.3.11.60.40.4.10.2	pNO(i+)
pNO(i+)(sn)	pNO(i+)(sn)	N_Regionale Lymfeklieren	2.16.840.1.113883.2.4.3.11.60.40.4.10.2	pNO(i+)(sn)
pNO(mol-)	pNO(mol-)	N_Regionale Lymfeklieren	2.16.840.1.113883.2.4.3.11.60.40.4.10.2	pNO(mol-)
pNO(mol-)(sn)	pNO(mol-)(sn)	N_Regionale Lymfeklieren	2.16.840.1.113883.2.4.3.11.60.40.4.10.2	pNO(mol-)(sn)
pNO(mol+)	pNO(mol+)	N_Regionale Lymfeklieren	2.16.840.1.113883.2.4.3.11.60.40.4.10.2	pNO(mol+)
pNO(mol+)(sn)	pNO(mol+)(sn)	N_Regionale Lymfeklieren	2.16.840.1.113883.2.4.3.11.60.40.4.10.2	pNO(mol+)(sn)

pN1mi(f)	pN1mi(f)	N_Regionale Lymfeklieren	2.16.840.1.113883.2.4.3.11.60.40.4.10.2	pN1mi(f)
pN1mi(sn)	pN1mi(sn)	N_Regionale Lymfeklieren	2.16.840.1.113883.2.4.3.11.60.40.4.10.2	pN1mi(sn)
pN1a	pN1a	N_Regionale Lymfeklieren	2.16.840.1.113883.2.4.3.11.60.40.4.10.2	pN1a
pN1a(f)	pN1a(f)	N_Regionale Lymfeklieren	2.16.840.1.113883.2.4.3.11.60.40.4.10.2	pN1a(f)
pN1a(sn)	pN1a(sn)	N_Regionale Lymfeklieren	2.16.840.1.113883.2.4.3.11.60.40.4.10.2	pN1a(sn)
pN1b	pN1b	N_Regionale Lymfeklieren	2.16.840.1.113883.2.4.3.11.60.40.4.10.2	pN1b
pN1b(f)	pN1b(f)	N_Regionale Lymfeklieren	2.16.840.1.113883.2.4.3.11.60.40.4.10.2	pN1b(f)
pN1b(sn)	pN1b(sn)	N_Regionale Lymfeklieren	2.16.840.1.113883.2.4.3.11.60.40.4.10.2	pN1b(sn)
pN1c	pN1c	N_Regionale Lymfeklieren	2.16.840.1.113883.2.4.3.11.60.40.4.10.2	pN1c
pN1c(f)	pN1c(f)	N_Regionale Lymfeklieren	2.16.840.1.113883.2.4.3.11.60.40.4.10.2	pN1c(f)
pN1c(sn)	pN1c(sn)	N_Regionale Lymfeklieren	2.16.840.1.113883.2.4.3.11.60.40.4.10.2	pN1c(sn)
pN2	pN2	N_Regionale Lymfeklieren	2.16.840.1.113883.2.4.3.11.60.40.4.10.2	pN2
pN2(f)	pN2(f)	N_Regionale Lymfeklieren	2.16.840.1.113883.2.4.3.11.60.40.4.10.2	pN2(f)
pN2(sn)	pN2(sn)	N_Regionale Lymfeklieren	2.16.840.1.113883.2.4.3.11.60.40.4.10.2	pN2(sn)
pN2a	pN2a	N_Regionale Lymfeklieren	2.16.840.1.113883.2.4.3.11.60.40.4.10.2	pN2a
pN2a(f)	pN2a(f)	N_Regionale Lymfeklieren	2.16.840.1.113883.2.4.3.11.60.40.4.10.2	pN2a(f)
pN2a(sn)	pN2a(sn)	N_Regionale Lymfeklieren	2.16.840.1.113883.2.4.3.11.60.40.4.10.2	pN2a(sn)
pN2b	pN2b	N_Regionale Lymfeklieren	2.16.840.1.113883.2.4.3.11.60.40.4.10.2	pN2b
pN2b(f)	pN2b(f)	N_Regionale Lymfeklieren	2.16.840.1.113883.2.4.3.11.60.40.4.10.2	pN2b(f)
pN2b(sn)	pN2b(sn)	N_Regionale Lymfeklieren	2.16.840.1.113883.2.4.3.11.60.40.4.10.2	pN2b(sn)
pN2c	pN2c	N_Regionale Lymfeklieren	2.16.840.1.113883.2.4.3.11.60.40.4.10.2	pN2c
pN2c(f)	pN2c(f)	N_Regionale Lymfeklieren	2.16.840.1.113883.2.4.3.11.60.40.4.10.2	pN2c(f)
pN2c(sn)	pN2c(sn)	N_Regionale Lymfeklieren	2.16.840.1.113883.2.4.3.11.60.40.4.10.2	pN2c(sn)
pN3	pN3	N_Regionale Lymfeklieren	2.16.840.1.113883.2.4.3.11.60.40.4.10.2	pN3
		N_Regionale Lymfeklieren	2.16.840.1.113883.2.4.3.11.60.40.4.10.2	

pN3b	pN3b	N_Regionale Lymfeklieren	2.16.840.1.113883.2.4.3.11.60.40.4.10.2	pN3b
pN3b(f)	pN3b(f)	N_Regionale Lymfeklieren	2.16.840.1.113883.2.4.3.11.60.40.4.10.2	pN3b(f)
pN3b(sn)	pN3b(sn)	N_Regionale Lymfeklieren	2.16.840.1.113883.2.4.3.11.60.40.4.10.2	pN3b(sn)
pN3c	pN3c	N_Regionale Lymfeklieren	2.16.840.1.113883.2.4.3.11.60.40.4.10.2	pN3c
pN3c(f)	pN3c(f)	N_Regionale Lymfeklieren	2.16.840.1.113883.2.4.3.11.60.40.4.10.2	pN3c(f)
pN3c(sn)	pN3c(sn)	N_Regionale Lymfeklieren	2.16.840.1.113883.2.4.3.11.60.40.4.10.2	pN3c(sn)

«document»	ypN_RegionalLymphnodesCodelist		
Definitie	De uitbreiding naar regionale lymfeklieren (N) voor een classificatie uitgevoerd tijdens of na een initiële multimodaliteitsbehandeling (waaronder ook chirurgische behandeling).		
Datatype			
DCM::ValueSetBinding	Extensible		
DCM::ValueSetId	2.16.840.1.113883.2.4.3.11.60.40.2.4.27.21		
Opties			

ypN_RegionaleLymfeklierenCodelijst	OID: 2.16.840.1.113883.2.4.3.11.60.40.2.4.27.
---	--

Concept Name	Concept Code	Coding System Name	Coding System OID	Description
ypNX	ypNX	N_Regionale Lymfeklieren	2.16.840.1.113883.2.4.3.11.60.40.4.10.2	ypNX
ypNX(f)	ypNX(f)	N_Regionale Lymfeklieren	2.16.840.1.113883.2.4.3.11.60.40.4.10.2	ypNX(f)
ypNX(sn)	ypNX(sn)	N_Regionale Lymfeklieren	2.16.840.1.113883.2.4.3.11.60.40.4.10.2	ypNX(sn)
ypN0	ypN0	N_Regionale Lymfeklieren	2.16.840.1.113883.2.4.3.11.60.40.4.10.2	ypN0
ypN0(f)	ypN0(f)	N_Regionale Lymfeklieren	2.16.840.1.113883.2.4.3.11.60.40.4.10.2	ypN0(f)
ypN0(sn)	ypN0(sn)	N_Regionale Lymfeklieren	2.16.840.1.113883.2.4.3.11.60.40.4.10.2	ypN0(sn)
ypN0(i-)	ypN0(i-)	N_Regionale Lymfeklieren	2.16.840.1.113883.2.4.3.11.60.40.4.10.2	ypN0(i-)
ypN0(i-)(sn)	ypN0(i-)(sn)	N_Regionale Lymfeklieren	2.16.840.1.113883.2.4.3.11.60.40.4.10.2	ypN0(i-)(sn)
ypN0(i+)	ypN0(i+)	N_Regionale Lymfeklieren	2.16.840.1.113883.2.4.3.11.60.40.4.10.2	ypN0(i+)

sn)	sn)	Lymfeklieren		
ypN1	ypN1	N_Regionale Lymfeklieren	2.16.840.1.113883.2.4.3.11.60.40.4.10.2	ypN1
ypN1(f)	ypN1(f)	N_Regionale Lymfeklieren	2.16.840.1.113883.2.4.3.11.60.40.4.10.2	ypN1(f)
ypN1(sn)	ypN1(sn)	N_Regionale Lymfeklieren	2.16.840.1.113883.2.4.3.11.60.40.4.10.2	ypN1(sn)
ypN1mi	ypN1mi	N_Regionale Lymfeklieren	2.16.840.1.113883.2.4.3.11.60.40.4.10.2	ypN1mi
ypN1mi(f)	ypN1mi(f)	N_Regionale Lymfeklieren	2.16.840.1.113883.2.4.3.11.60.40.4.10.2	ypN1mi(f)
ypN1mi(sn)	ypN1mi(sn)	N_Regionale Lymfeklieren	2.16.840.1.113883.2.4.3.11.60.40.4.10.2	ypN1mi(sn)
ypN1a	ypN1a	N_Regionale Lymfeklieren	2.16.840.1.113883.2.4.3.11.60.40.4.10.2	ypN1a
ypN1a(f)	ypN1a(f)	N_Regionale Lymfeklieren	2.16.840.1.113883.2.4.3.11.60.40.4.10.2	ypN1a(f)
ypN1a(sn)	ypN1a(sn)	N_Regionale Lymfeklieren	2.16.840.1.113883.2.4.3.11.60.40.4.10.2	ypN1a(sn)
ypN1b	ypN1b	N_Regionale Lymfeklieren	2.16.840.1.113883.2.4.3.11.60.40.4.10.2	ypN1b
ypN1b(f)	ypN1b(f)	N_Regionale Lymfeklieren	2.16.840.1.113883.2.4.3.11.60.40.4.10.2	ypN1b(f)
ypN1b(sn)	ypN1b(sn)	N_Regionale Lymfeklieren	2.16.840.1.113883.2.4.3.11.60.40.4.10.2	ypN1b(sn)
ypN1c	ypN1c	N_Regionale Lymfeklieren	2.16.840.1.113883.2.4.3.11.60.40.4.10.2	ypN1c
ypN1c(f)	ypN1c(f)	N_Regionale Lymfeklieren	2.16.840.1.113883.2.4.3.11.60.40.4.10.2	ypN1c(f)
ypN1c(sn)	ypN1c(sn)	N_Regionale Lymfeklieren	2.16.840.1.113883.2.4.3.11.60.40.4.10.2	ypN1c(sn)
ypN2	ypN2	N_Regionale Lymfeklieren	2.16.840.1.113883.2.4.3.11.60.40.4.10.2	ypN2
ypN2(f)	ypN2(f)	N_Regionale Lymfeklieren	2.16.840.1.113883.2.4.3.11.60.40.4.10.2	ypN2(f)
ypN2(sn)	ypN2(sn)	N_Regionale Lymfeklieren	2.16.840.1.113883.2.4.3.11.60.40.4.10.2	ypN2(sn)
ypN2a	ypN2a	N_Regionale Lymfeklieren	2.16.840.1.113883.2.4.3.11.60.40.4.10.2	ypN2a
ypN2a(f)	ypN2a(f)	N_Regionale Lymfeklieren	2.16.840.1.113883.2.4.3.11.60.40.4.10.2	ypN2a(f)
ypN2a(sn)	ypN2a(sn)	N_Regionale Lymfeklieren	2.16.840.1.113883.2.4.3.11.60.40.4.10.2	ypN2a(sn)
ypN2b	ypN2b	N_Regionale Lymfeklieren	2.16.840.1.113883.2.4.3.11.60.40.4.10.2	ypN2b
ypN2b(f)	ypN2b(f)	N_Regionale Lymfeklieren	2.16.840.1.113883.2.4.3.11.60.40.4.10.2	ypN2b(f)
ypN2b(sn)	ypN2b(sn)	N_Regionale Lymfeklieren	2.16.840.1.113883.2.4.3.11.60.40.4.10.2	ypN2b(sn)

		Lymfeklieren		
ypN3(sn)	ypN3(sn)	N_Regionale Lymfeklieren	2.16.840.1.113883.2.4.3.11.60.40.4.10.2	ypN3(sn)
ypN3a	ypN3a	N_Regionale Lymfeklieren	2.16.840.1.113883.2.4.3.11.60.40.4.10.2	ypN3a
ypN3a(f)	ypN3a(f)	N_Regionale Lymfeklieren	2.16.840.1.113883.2.4.3.11.60.40.4.10.2	ypN3a(f)
ypN3a(sn)	ypN3a(sn)	N_Regionale Lymfeklieren	2.16.840.1.113883.2.4.3.11.60.40.4.10.2	ypN3a(sn)
ypN3b	ypN3b	N_Regionale Lymfeklieren	2.16.840.1.113883.2.4.3.11.60.40.4.10.2	ypN3b
ypN3b(f)	ypN3b(f)	N_Regionale Lymfeklieren	2.16.840.1.113883.2.4.3.11.60.40.4.10.2	ypN3b(f)
ypN3b(sn)	ypN3b(sn)	N_Regionale Lymfeklieren	2.16.840.1.113883.2.4.3.11.60.40.4.10.2	ypN3b(sn)
ypN3c	ypN3c	N_Regionale Lymfeklieren	2.16.840.1.113883.2.4.3.11.60.40.4.10.2	ypN3c
ypN3c(f)	ypN3c(f)	N_Regionale Lymfeklieren	2.16.840.1.113883.2.4.3.11.60.40.4.10.2	ypN3c(f)
ypN3c(sn)	ypN3c(sn)	N_Regionale Lymfeklieren	2.16.840.1.113883.2.4.3.11.60.40.4.10.2	ypN3c(sn)

«document»	rcN_RegionalLymphnodesCodelist		
Definitie	De uitbreiding naar regionale lymfeklieren (N) voor een klinische classificatie in geval van een recidiverende tumor (na een ziektevrij interval).		
Datatype			
DCM::ValueSetBinding	Extensible		
DCM::ValueSetId	2.16.840.1.113883.2.4.3.11.60.40.2.4.27.22		
Opties			

rcN_RegionaleLymfeklierenCodelijst	OID: 2.16.840.1.113883.2.4.3.11.60.40.2.4.27.
---	--

Concept Name	Concept Code	Coding System Name	Coding System OID	Description
rcNX	rcNX	N_Regionale Lymfeklieren	2.16.840.1.113883.2.4.3.11.60.40.4.10.2	rcNX
rcNX(f)	rcNX(f)	N_Regionale Lymfeklieren	2.16.840.1.113883.2.4.3.11.60.40.4.10.2	rcNX(f)
rcNX(sn)	rcNX(sn)	N_Regionale Lymfeklieren	2.16.840.1.113883.2.4.3.11.60.40.4.10.2	rcNX(sn)
rcNO	rcNO	N_Regionale Lymfeklieren	2.16.840.1.113883.2.4.3.11.60.40.4.10.2	rcNO
rcNO(f)	rcNO(f)	N_Regionale Lymfeklieren	2.16.840.1.113883.2.4.3.11.60.40.4.10.2	rcNO(f)

rcNO(i+)(sn)	rcNO(i+)(sn)	N_Regionale Lymfeklieren	2.16.840.1.113883.2.4.3.11.60.40.4.10.2	rcNO(i+)(sn)
rcNO(mol-)	rcNO(mol-)	N_Regionale Lymfeklieren	2.16.840.1.113883.2.4.3.11.60.40.4.10.2	rcNO(mol-)
rcNO(mol-)(sn)	rcNO(mol-)(sn)	N_Regionale Lymfeklieren	2.16.840.1.113883.2.4.3.11.60.40.4.10.2	rcNO(mol-)(sn)
rcNO(mol+)	rcNO(mol+)	N_Regionale Lymfeklieren	2.16.840.1.113883.2.4.3.11.60.40.4.10.2	rcNO(mol+)
rcNO(mol+)(sn)	rcNO(mol+)(sn)	N_Regionale Lymfeklieren	2.16.840.1.113883.2.4.3.11.60.40.4.10.2	rcNO(mol+)(sn)
rcN1	rcN1	N_Regionale Lymfeklieren	2.16.840.1.113883.2.4.3.11.60.40.4.10.2	rcN1
rcN1(f)	rcN1(f)	N_Regionale Lymfeklieren	2.16.840.1.113883.2.4.3.11.60.40.4.10.2	rcN1(f)
rcN1(sn)	rcN1(sn)	N_Regionale Lymfeklieren	2.16.840.1.113883.2.4.3.11.60.40.4.10.2	rcN1(sn)
rcN1mi	rcN1mi	N_Regionale Lymfeklieren	2.16.840.1.113883.2.4.3.11.60.40.4.10.2	rcN1mi
rcN1mi(f)	rcN1mi(f)	N_Regionale Lymfeklieren	2.16.840.1.113883.2.4.3.11.60.40.4.10.2	rcN1mi(f)
rcN1mi(sn)	rcN1mi(sn)	N_Regionale Lymfeklieren	2.16.840.1.113883.2.4.3.11.60.40.4.10.2	rcN1mi(sn)
rcN1a	rcN1a	N_Regionale Lymfeklieren	2.16.840.1.113883.2.4.3.11.60.40.4.10.2	rcN1a
rcN1a(f)	rcN1a(f)	N_Regionale Lymfeklieren	2.16.840.1.113883.2.4.3.11.60.40.4.10.2	rcN1a(f)
rcN1a(sn)	rcN1a(sn)	N_Regionale Lymfeklieren	2.16.840.1.113883.2.4.3.11.60.40.4.10.2	rcN1a(sn)
rcN1b	rcN1b	N_Regionale Lymfeklieren	2.16.840.1.113883.2.4.3.11.60.40.4.10.2	rcN1b
rcN1b(f)	rcN1b(f)	N_Regionale Lymfeklieren	2.16.840.1.113883.2.4.3.11.60.40.4.10.2	rcN1b(f)
rcN1b(sn)	rcN1b(sn)	N_Regionale Lymfeklieren	2.16.840.1.113883.2.4.3.11.60.40.4.10.2	rcN1b(sn)
rcN1c	rcN1c	N_Regionale Lymfeklieren	2.16.840.1.113883.2.4.3.11.60.40.4.10.2	rcN1c
rcN1c(f)	rcN1c(f)	N_Regionale Lymfeklieren	2.16.840.1.113883.2.4.3.11.60.40.4.10.2	rcN1c(f)
rcN1c(sn)	rcN1c(sn)	N_Regionale Lymfeklieren	2.16.840.1.113883.2.4.3.11.60.40.4.10.2	rcN1c(sn)
rcN2	rcN2	N_Regionale Lymfeklieren	2.16.840.1.113883.2.4.3.11.60.40.4.10.2	rcN2
rcN2(f)	rcN2(f)	N_Regionale Lymfeklieren	2.16.840.1.113883.2.4.3.11.60.40.4.10.2	rcN2(f)
rcN2(sn)	rcN2(sn)	N_Regionale Lymfeklieren	2.16.840.1.113883.2.4.3.11.60.40.4.10.2	rcN2(sn)
rcN2a	rcN2a	N_Regionale Lymfeklieren	2.16.840.1.113883.2.4.3.11.60.40.4.10.2	rcN2a
rcN2a(f)	rcN2a(f)	N_Regionale Lymfeklieren	2.16.840.1.113883.2.4.3.11.60.40.4.10.2	rcN2a(f)

rcN2c	rcN2c	N_Regionale Lymfeklieren	2.16.840.1.113883.2.4.3.11.60.40.4.10.2	rcN2c
rcN2c(f)	rcN2c(f)	N_Regionale Lymfeklieren	2.16.840.1.113883.2.4.3.11.60.40.4.10.2	rcN2c(f)
rcN2c(sn)	rcN2c(sn)	N_Regionale Lymfeklieren	2.16.840.1.113883.2.4.3.11.60.40.4.10.2	rcN2c(sn)
rcN3	rcN3	N_Regionale Lymfeklieren	2.16.840.1.113883.2.4.3.11.60.40.4.10.2	rcN3
rcN3(f)	rcN3(f)	N_Regionale Lymfeklieren	2.16.840.1.113883.2.4.3.11.60.40.4.10.2	rcN3(f)
rcN3(sn)	rcN3(sn)	N_Regionale Lymfeklieren	2.16.840.1.113883.2.4.3.11.60.40.4.10.2	rcN3(sn)
rcN3a	rcN3a	N_Regionale Lymfeklieren	2.16.840.1.113883.2.4.3.11.60.40.4.10.2	rcN3a
rcN3a(f)	rcN3a(f)	N_Regionale Lymfeklieren	2.16.840.1.113883.2.4.3.11.60.40.4.10.2	rcN3a(f)
rcN3a(sn)	rcN3a(sn)	N_Regionale Lymfeklieren	2.16.840.1.113883.2.4.3.11.60.40.4.10.2	rcN3a(sn)
rcN3b	rcN3b	N_Regionale Lymfeklieren	2.16.840.1.113883.2.4.3.11.60.40.4.10.2	rcN3b
rcN3b(f)	rcN3b(f)	N_Regionale Lymfeklieren	2.16.840.1.113883.2.4.3.11.60.40.4.10.2	rcN3b(f)
rcN3b(sn)	rcN3b(sn)	N_Regionale Lymfeklieren	2.16.840.1.113883.2.4.3.11.60.40.4.10.2	rcN3b(sn)
rcN3c	rcN3c	N_Regionale Lymfeklieren	2.16.840.1.113883.2.4.3.11.60.40.4.10.2	rcN3c
rcN3c(f)	rcN3c(f)	N_Regionale Lymfeklieren	2.16.840.1.113883.2.4.3.11.60.40.4.10.2	rcN3c(f)
rcN3c(sn)	rcN3c(sn)	N_Regionale Lymfeklieren	2.16.840.1.113883.2.4.3.11.60.40.4.10.2	rcN3c(sn)

«document»	rpN_RegionalLymphnodesCodelist		
Definitie	De uitbreiding naar regionale lymfeklieren (N) voor een postchirurgisch pathologische classificatie in geval van een recidiverende tumor (na een ziektevrij interval).		
Datatype			
DCM::ValueSetBinding	Extensible		
DCM::ValueSetId	2.16.840.1.113883.2.4.3.11.60.40.2.4.27.23		
Opties			

rpN_RegionaleLymfeklierenCodelijst		OID: 2.16.840.1.113883.2.4.3.11.60.40.2.4.27.23		
---	--	--	--	--

Concept Name	Concept Code	Coding System Name	Coding System OID	Description
rpNX	rpNX	N_Regionale Lymfeklieren	2.16.840.1.113883.2.4.3.11.60.40.4.10.2	rpNX

		Lymfeklieren		
rpN0(i-)	rpN0(i-)	N_Regionale Lymfeklieren	2.16.840.1.113883.2.4.3.11.60.40.4.10.2	rpN0(i-)
rpN0(i-)(sn)	rpN0(i-)(sn)	N_Regionale Lymfeklieren	2.16.840.1.113883.2.4.3.11.60.40.4.10.2	rpN0(i-)(sn)
rpN0(i+)	rpN0(i+)	N_Regionale Lymfeklieren	2.16.840.1.113883.2.4.3.11.60.40.4.10.2	rpN0(i+)
rpN0(i+)(sn)	rpN0(i+)(sn)	N_Regionale Lymfeklieren	2.16.840.1.113883.2.4.3.11.60.40.4.10.2	rpN0(i+)(sn)
rpN0(mol-)	rpN0(mol-)	N_Regionale Lymfeklieren	2.16.840.1.113883.2.4.3.11.60.40.4.10.2	rpN0(mol-)
rpN0(mol-)(sn)	rpN0(mol-)(sn)	N_Regionale Lymfeklieren	2.16.840.1.113883.2.4.3.11.60.40.4.10.2	rpN0(mol-)(sn)
rpN0(mol+)	rpN0(mol+)	N_Regionale Lymfeklieren	2.16.840.1.113883.2.4.3.11.60.40.4.10.2	rpN0(mol+)
rpN0(mol+)(sn)	rpN0(mol+)(sn)	N_Regionale Lymfeklieren	2.16.840.1.113883.2.4.3.11.60.40.4.10.2	rpN0(mol+)(sn)
rpN1	rpN1	N_Regionale Lymfeklieren	2.16.840.1.113883.2.4.3.11.60.40.4.10.2	rpN1
rpN1(f)	rpN1(f)	N_Regionale Lymfeklieren	2.16.840.1.113883.2.4.3.11.60.40.4.10.2	rpN1(f)
rpN1(sn)	rpN1(sn)	N_Regionale Lymfeklieren	2.16.840.1.113883.2.4.3.11.60.40.4.10.2	rpN1(sn)
rpN1mi	rpN1mi	N_Regionale Lymfeklieren	2.16.840.1.113883.2.4.3.11.60.40.4.10.2	rpN1mi
rpN1mi(f)	rpN1mi(f)	N_Regionale Lymfeklieren	2.16.840.1.113883.2.4.3.11.60.40.4.10.2	rpN1mi(f)
rpN1mi(sn)	rpN1mi(sn)	N_Regionale Lymfeklieren	2.16.840.1.113883.2.4.3.11.60.40.4.10.2	rpN1mi(sn)
rpN1a	rpN1a	N_Regionale Lymfeklieren	2.16.840.1.113883.2.4.3.11.60.40.4.10.2	rpN1a
rpN1a(f)	rpN1a(f)	N_Regionale Lymfeklieren	2.16.840.1.113883.2.4.3.11.60.40.4.10.2	rpN1a(f)
rpN1a(sn)	rpN1a(sn)	N_Regionale Lymfeklieren	2.16.840.1.113883.2.4.3.11.60.40.4.10.2	rpN1a(sn)
rpN1b	rpN1b	N_Regionale Lymfeklieren	2.16.840.1.113883.2.4.3.11.60.40.4.10.2	rpN1b
rpN1b(f)	rpN1b(f)	N_Regionale Lymfeklieren	2.16.840.1.113883.2.4.3.11.60.40.4.10.2	rpN1b(f)
rpN1b(sn)	rpN1b(sn)	N_Regionale Lymfeklieren	2.16.840.1.113883.2.4.3.11.60.40.4.10.2	rpN1b(sn)
rpN1c	rpN1c	N_Regionale Lymfeklieren	2.16.840.1.113883.2.4.3.11.60.40.4.10.2	rpN1c
rpN1c(f)	rpN1c(f)	N_Regionale Lymfeklieren	2.16.840.1.113883.2.4.3.11.60.40.4.10.2	rpN1c(f)
rpN1c(sn)	rpN1c(sn)	N_Regionale Lymfeklieren	2.16.840.1.113883.2.4.3.11.60.40.4.10.2	rpN1c(sn)
rpN2	rpN2	N_Regionale Lymfeklieren	2.16.840.1.113883.2.4.3.11.60.40.4.10.2	rpN2

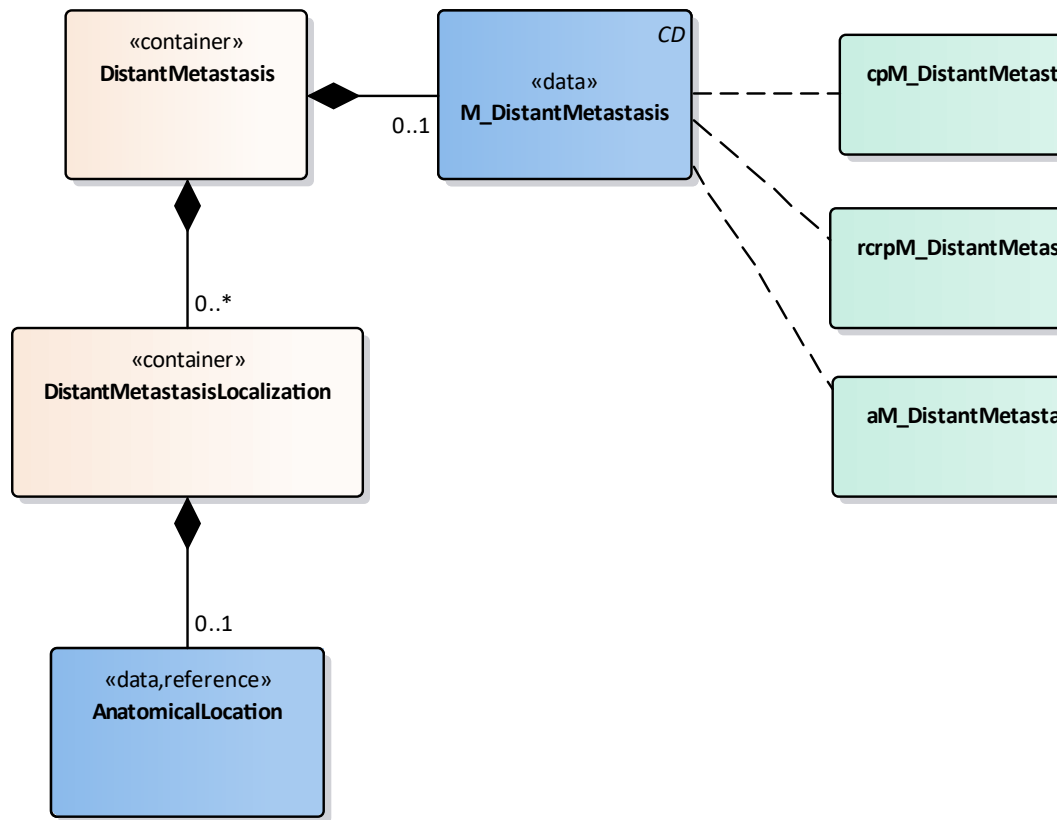
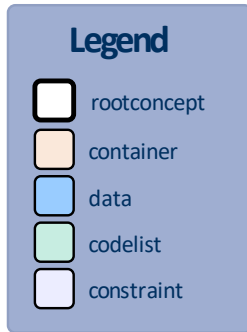
		Lymfeklieren		
rpN2b	rpN2b	N_Regionale Lymfeklieren	2.16.840.1.113883.2.4.3.11.60.40.4.10.2	rpN2b
rpN2b(f)	rpN2b(f)	N_Regionale Lymfeklieren	2.16.840.1.113883.2.4.3.11.60.40.4.10.2	rpN2b(f)
rpN2b(sn)	rpN2b(sn)	N_Regionale Lymfeklieren	2.16.840.1.113883.2.4.3.11.60.40.4.10.2	rpN2b(sn)
rpN2c	rpN2c	N_Regionale Lymfeklieren	2.16.840.1.113883.2.4.3.11.60.40.4.10.2	rpN2c
rpN2c(f)	rpN2c(f)	N_Regionale Lymfeklieren	2.16.840.1.113883.2.4.3.11.60.40.4.10.2	rpN2c(f)
rpN2c(sn)	rpN2c(sn)	N_Regionale Lymfeklieren	2.16.840.1.113883.2.4.3.11.60.40.4.10.2	rpN2c(sn)
rpN3	rpN3	N_Regionale Lymfeklieren	2.16.840.1.113883.2.4.3.11.60.40.4.10.2	rpN3
rpN3(f)	rpN3(f)	N_Regionale Lymfeklieren	2.16.840.1.113883.2.4.3.11.60.40.4.10.2	rpN3(f)
rpN3(sn)	rpN3(sn)	N_Regionale Lymfeklieren	2.16.840.1.113883.2.4.3.11.60.40.4.10.2	rpN3(sn)
rpN3a	rpN3a	N_Regionale Lymfeklieren	2.16.840.1.113883.2.4.3.11.60.40.4.10.2	rpN3a
rpN3a(f)	rpN3a(f)	N_Regionale Lymfeklieren	2.16.840.1.113883.2.4.3.11.60.40.4.10.2	rpN3a(f)
rpN3a(sn)	rpN3a(sn)	N_Regionale Lymfeklieren	2.16.840.1.113883.2.4.3.11.60.40.4.10.2	rpN3a(sn)
rpN3b	rpN3b	N_Regionale Lymfeklieren	2.16.840.1.113883.2.4.3.11.60.40.4.10.2	rpN3b
rpN3b(f)	rpN3b(f)	N_Regionale Lymfeklieren	2.16.840.1.113883.2.4.3.11.60.40.4.10.2	rpN3b(f)
rpN3b(sn)	rpN3b(sn)	N_Regionale Lymfeklieren	2.16.840.1.113883.2.4.3.11.60.40.4.10.2	rpN3b(sn)
rpN3c	rpN3c	N_Regionale Lymfeklieren	2.16.840.1.113883.2.4.3.11.60.40.4.10.2	rpN3c
rpN3c(f)	rpN3c(f)	N_Regionale Lymfeklieren	2.16.840.1.113883.2.4.3.11.60.40.4.10.2	rpN3c(f)
rpN3c(sn)	rpN3c(sn)	N_Regionale Lymfeklieren	2.16.840.1.113883.2.4.3.11.60.40.4.10.2	rpN3c(sn)

«document»	aN_RegionalLymphnodesCodelist	
Definitie	De regionale lymfeklieren (N) voor een classificatie vastgesteld tijdens autopsie	
Datatype		
DCM::ValueSetBinding	Extensible	
DCM::ValueSetId	2.16.840.1.113883.2.4.3.11. 60.40.2.4.27.24	
Opties		

		Lymfeklieren		
aN0	aN0	N_Regionale Lymfeklieren	2.16.840.1.113883.2.4.3.11.60.40.4.10.2	aN0
aN0(f)	aN0(f)	N_Regionale Lymfeklieren	2.16.840.1.113883.2.4.3.11.60.40.4.10.2	aN0(f)
aN0(sn)	aN0(sn)	N_Regionale Lymfeklieren	2.16.840.1.113883.2.4.3.11.60.40.4.10.2	aN0(sn)
aN0(i-)	aN0(i-)	N_Regionale Lymfeklieren	2.16.840.1.113883.2.4.3.11.60.40.4.10.2	aN0(i-)
aN0(i-)(sn)	aN0(i-)(sn)	N_Regionale Lymfeklieren	2.16.840.1.113883.2.4.3.11.60.40.4.10.2	aN0(i-)(sn)
aN0(i+)	aN0(i+)	N_Regionale Lymfeklieren	2.16.840.1.113883.2.4.3.11.60.40.4.10.2	aN0(i+)
aN0(i+)(sn)	aN0(i+)(sn)	N_Regionale Lymfeklieren	2.16.840.1.113883.2.4.3.11.60.40.4.10.2	aN0(i+)(sn)
aN0(mol-)	aN0(mol-)	N_Regionale Lymfeklieren	2.16.840.1.113883.2.4.3.11.60.40.4.10.2	aN0(mol-)
aN0(mol-)(sn)	aN0(mol-)(sn)	N_Regionale Lymfeklieren	2.16.840.1.113883.2.4.3.11.60.40.4.10.2	aN0(mol-)(sn)
aN0(mol+)	aN0(mol+)	N_Regionale Lymfeklieren	2.16.840.1.113883.2.4.3.11.60.40.4.10.2	aN0(mol+)
aN0(mol+)(sn)	aN0(mol+)(sn)	N_Regionale Lymfeklieren	2.16.840.1.113883.2.4.3.11.60.40.4.10.2	aN0(mol+)(sn)
aN1	aN1	N_Regionale Lymfeklieren	2.16.840.1.113883.2.4.3.11.60.40.4.10.2	aN1
aN1(f)	aN1(f)	N_Regionale Lymfeklieren	2.16.840.1.113883.2.4.3.11.60.40.4.10.2	aN1(f)
aN1(sn)	aN1(sn)	N_Regionale Lymfeklieren	2.16.840.1.113883.2.4.3.11.60.40.4.10.2	aN1(sn)
aN1mi	aN1mi	N_Regionale Lymfeklieren	2.16.840.1.113883.2.4.3.11.60.40.4.10.2	aN1mi
aN1mi(f)	aN1mi(f)	N_Regionale Lymfeklieren	2.16.840.1.113883.2.4.3.11.60.40.4.10.2	aN1mi(f)
aN1mi(sn)	aN1mi(sn)	N_Regionale Lymfeklieren	2.16.840.1.113883.2.4.3.11.60.40.4.10.2	aN1mi(sn)
aN1a	aN1a	N_Regionale Lymfeklieren	2.16.840.1.113883.2.4.3.11.60.40.4.10.2	aN1a
aN1a(f)	aN1a(f)	N_Regionale Lymfeklieren	2.16.840.1.113883.2.4.3.11.60.40.4.10.2	aN1a(f)
aN1a(sn)	aN1a(sn)	N_Regionale Lymfeklieren	2.16.840.1.113883.2.4.3.11.60.40.4.10.2	aN1a(sn)
aN1b	aN1b	N_Regionale Lymfeklieren	2.16.840.1.113883.2.4.3.11.60.40.4.10.2	aN1b
aN1b(f)	aN1b(f)	N_Regionale Lymfeklieren	2.16.840.1.113883.2.4.3.11.60.40.4.10.2	aN1b(f)
aN1b(sn)	aN1b(sn)	N_Regionale Lymfeklieren	2.16.840.1.113883.2.4.3.11.60.40.4.10.2	aN1b(sn)
aN1c	aN1c	N_Regionale Lymfeklieren	2.16.840.1.113883.2.4.3.11.60.40.4.10.2	aN1c

		Lymfeklieren		
aN2a	aN2a	N_Regionale Lymfeklieren	2.16.840.1.113883.2.4.3.11.60.40.4.10.2	aN2a
aN2a(f)	aN2a(f)	N_Regionale Lymfeklieren	2.16.840.1.113883.2.4.3.11.60.40.4.10.2	aN2a(f)
aN2a(sn)	aN2a(sn)	N_Regionale Lymfeklieren	2.16.840.1.113883.2.4.3.11.60.40.4.10.2	aN2a(sn)
aN2b	aN2b	N_Regionale Lymfeklieren	2.16.840.1.113883.2.4.3.11.60.40.4.10.2	aN2b
aN2b(f)	aN2b(f)	N_Regionale Lymfeklieren	2.16.840.1.113883.2.4.3.11.60.40.4.10.2	aN2b(f)
aN2b(sn)	aN2b(sn)	N_Regionale Lymfeklieren	2.16.840.1.113883.2.4.3.11.60.40.4.10.2	aN2b(sn)
aN2c	aN2c	N_Regionale Lymfeklieren	2.16.840.1.113883.2.4.3.11.60.40.4.10.2	aN2c
aN2c(f)	aN2c(f)	N_Regionale Lymfeklieren	2.16.840.1.113883.2.4.3.11.60.40.4.10.2	aN2c(f)
aN2c(sn)	aN2c(sn)	N_Regionale Lymfeklieren	2.16.840.1.113883.2.4.3.11.60.40.4.10.2	aN2c(sn)
aN3	aN3	N_Regionale Lymfeklieren	2.16.840.1.113883.2.4.3.11.60.40.4.10.2	aN3
aN3(f)	aN3(f)	N_Regionale Lymfeklieren	2.16.840.1.113883.2.4.3.11.60.40.4.10.2	aN3(f)
aN3(sn)	aN3(sn)	N_Regionale Lymfeklieren	2.16.840.1.113883.2.4.3.11.60.40.4.10.2	aN3(sn)
aN3a	aN3a	N_Regionale Lymfeklieren	2.16.840.1.113883.2.4.3.11.60.40.4.10.2	aN3a
aN3a(f)	aN3a(f)	N_Regionale Lymfeklieren	2.16.840.1.113883.2.4.3.11.60.40.4.10.2	aN3a(f)
aN3a(sn)	aN3a(sn)	N_Regionale Lymfeklieren	2.16.840.1.113883.2.4.3.11.60.40.4.10.2	aN3a(sn)
aN3b	aN3b	N_Regionale Lymfeklieren	2.16.840.1.113883.2.4.3.11.60.40.4.10.2	aN3b
aN3b(f)	aN3b(f)	N_Regionale Lymfeklieren	2.16.840.1.113883.2.4.3.11.60.40.4.10.2	aN3b(f)
aN3b(sn)	aN3b(sn)	N_Regionale Lymfeklieren	2.16.840.1.113883.2.4.3.11.60.40.4.10.2	aN3b(sn)
aN3c	aN3c	N_Regionale Lymfeklieren	2.16.840.1.113883.2.4.3.11.60.40.4.10.2	aN3c
aN3c(f)	aN3c(f)	N_Regionale Lymfeklieren	2.16.840.1.113883.2.4.3.11.60.40.4.10.2	aN3c(f)
aN3c(sn)	aN3c(sn)	N_Regionale Lymfeklieren	2.16.840.1.113883.2.4.3.11.60.40.4.10.2	aN3c(sn)

Legend	
Definitie	
Datatype	



«container»	DistantMetastasis	
Definitie	Container of the DistantMetastasis concept.This container contains all elements of the DistantMetastasis concept.	
Datatype		
DCM::ConceptId	NL-CM:4.27.25	
DCM::DefinitionCode	SNOMED CT: 385380006 Metastasis category finding	
Opties		

«data»	M_DistantMetastasis	
Definitie	Staging result of the presence or absence of distant metastasis, the M-category of the TNM classification. 	
Datatype	CD	
DCM::ConceptId	NL-CM:4.27.26	
DCM::DefinitionCode	SNOMED CT: 277208005 M category	
DCM::ValueSet	rcrpM_DistantMetastasisCodelist	OID: 2.16.840.1.113883.2.4.3.11.60.40.2.4.27
DCM::ValueSet	cpM_DistantMetastasisCodelist	OID: 2.16.840.1.113883.2.4.3.11.60.40.2.4.27
DCM::ValueSet	aM_DistantMetastasisCodelist	OID: 2.16.840.1.113883.2.4.3.11.60.40.2.4.27
Opties		

«container»	DistantMetastasisLocalization	
Definitie	Container of the DistantMetastasisLocalization concept.This container	

	tumor.	
Datatype		
DCM::ConceptId	NL-CM:4.27.28	
DCM::DefinitionCode	SNOMED CT: 385421009 Site of distant metastasis	
DCM::ReferencedConceptId	NL-CM:20.7.1	This is a reference to the rootconcept of information model AnatomicalLocation.
Opties		

«document»	aM_DistantMetastasisCodelist	
Definitie	De uitbreiding naar metastase op afstand voor een classificatie vastgesteld tijdens autopsie.	
Datatype		
DCM::ValueSetBinding	Extensible	
DCM::ValueSetId	2.16.840.1.113883.2.4.3.11.60.40.2.4.27.25	
Opties		

aM_AfstandsMetastasenCodelijst	OID: 2.16.840.1.113883.2.4.3.11.60.40.2.4.27.25
---------------------------------------	--

Concept Name	Concept Code	Coding System Name	Coding System OID	Description
aM0	aM0	M_Afstands metastase	2.16.840.1.113883.2.4.3.11.60.40.4.10.3	aM0
aM0(i+)	aM0(i+)	M_Afstands metastase	2.16.840.1.113883.2.4.3.11.60.40.4.10.3	aM0(i+)
aM0(mol+)	aM0(mol+)	M_Afstands metastase	2.16.840.1.113883.2.4.3.11.60.40.4.10.3	aM0(mol+)
aM1	aM1	M_Afstands metastase	2.16.840.1.113883.2.4.3.11.60.40.4.10.3	aM1
aM1a	aM1a	M_Afstands metastase	2.16.840.1.113883.2.4.3.11.60.40.4.10.3	aM1a
aM1a(0)	aM1a(0)	M_Afstands metastase	2.16.840.1.113883.2.4.3.11.60.40.4.10.3	aM1a(0)
aM1a(1)	aM1a(1)	M_Afstands metastase	2.16.840.1.113883.2.4.3.11.60.40.4.10.3	aM1a(1)
aM1b	aM1b	M_Afstands metastase	2.16.840.1.113883.2.4.3.11.60.40.4.10.3	aM1b
aM1b(0)	aM1b(0)	M_Afstands metastase	2.16.840.1.113883.2.4.3.11.60.40.4.10.3	aM1b(0)
aM1b(1)	aM1b(1)	M_Afstands metastase	2.16.840.1.113883.2.4.3.11.60.40.4.10.3	aM1b(1)
aM1c	aM1c	M_Afstands metastase	2.16.840.1.113883.2.4.3.11.60.40.4.10.3	aM1c
aM1c(0)	aM1c(0)	M_Afstands metastase	2.16.840.1.113883.2.4.3.11.60.40.4.10.3	aM1c(0)
aM1c(1)	aM1c(1)	M_Afstands metastase	2.16.840.1.113883.2.4.3.11.60.40.4.10.3	aM1c(1)

Definitie	De uitbreiding naar metastase op afstand (M) voor een klinische of postchirurgische histologische pathologische classificatie.	
Datatype		
DCM::ValueSetBinding	Extensible	
DCM::ValueSetId	2.16.840.1.113883.2.4.3.11.60.40.2.4.27.28	
Opties		

cpM_AfstandsMetastasenCodelijst **OID: 2.16.840.1.113883.2.4.3.11.60.40.2.4.27.**

Concept Name	Concept Code	Coding System Name	Coding System OID	Description
cM0	cM0	M_Afstands metastase	2.16.840.1.113883.2.4.3.11.60.40.4.10.3	cM0
cM0(i+)	cM0(i+)	M_Afstands metastase	2.16.840.1.113883.2.4.3.11.60.40.4.10.3	cM0(i+)
cM0(mol+)	cM0(mol+)	M_Afstands metastase	2.16.840.1.113883.2.4.3.11.60.40.4.10.3	cM0(mol+)
cM1	cM1	M_Afstands metastase	2.16.840.1.113883.2.4.3.11.60.40.4.10.3	cM1
cM1a	cM1a	M_Afstands metastase	2.16.840.1.113883.2.4.3.11.60.40.4.10.3	cM1a
cM1a(0)	cM1a(0)	M_Afstands metastase	2.16.840.1.113883.2.4.3.11.60.40.4.10.3	cM1a(0)
cM1a(1)	cM1a(1)	M_Afstands metastase	2.16.840.1.113883.2.4.3.11.60.40.4.10.3	cM1a(1)
cM1b	cM1b	M_Afstands metastase	2.16.840.1.113883.2.4.3.11.60.40.4.10.3	cM1b
cM1b(0)	cM1b(0)	M_Afstands metastase	2.16.840.1.113883.2.4.3.11.60.40.4.10.3	cM1b(0)
cM1b(1)	cM1b(1)	M_Afstands metastase	2.16.840.1.113883.2.4.3.11.60.40.4.10.3	cM1b(1)
cM1c	cM1c	M_Afstands metastase	2.16.840.1.113883.2.4.3.11.60.40.4.10.3	cM1c
cM1c(0)	cM1c(0)	M_Afstands metastase	2.16.840.1.113883.2.4.3.11.60.40.4.10.3	cM1c(0)
cM1c(1)	cM1c(1)	M_Afstands metastase	2.16.840.1.113883.2.4.3.11.60.40.4.10.3	cM1c(1)
cM1d	cM1d	M_Afstands metastase	2.16.840.1.113883.2.4.3.11.60.40.4.10.3	cM1d
cM1d(0)	cM1d(0)	M_Afstands metastase	2.16.840.1.113883.2.4.3.11.60.40.4.10.3	cM1d(0)
cM1d(1)	cM1d(1)	M_Afstands metastase	2.16.840.1.113883.2.4.3.11.60.40.4.10.3	cM1d(1)
pM1	pM1	M_Afstands metastase	2.16.840.1.113883.2.4.3.11.60.40.4.10.3	pM1
pM1a	pM1a	M_Afstands metastase	2.16.840.1.113883.2.4.3.11.60.40.4.10.3	pM1a
pM1a(0)	pM1a(0)	M_Afstands metastase	2.16.840.1.113883.2.4.3.11.60.40.4.10.3	pM1a(0)

pM1c	pM1c	M_Afstands metastase	2.16.840.1.113883.2.4.3.11.60.40.4.10.3	pM1c
pM1c(0)	pM1c(0)	M_Afstands metastase	2.16.840.1.113883.2.4.3.11.60.40.4.10.3	pM1c(0)
pM1c(1)	pM1c(1)	M_Afstands metastase	2.16.840.1.113883.2.4.3.11.60.40.4.10.3	pM1c(1)
pM1d	pM1d	M_Afstands metastase	2.16.840.1.113883.2.4.3.11.60.40.4.10.3	pM1d
pM1d(0)	pM1d(0)	M_Afstands metastase	2.16.840.1.113883.2.4.3.11.60.40.4.10.3	pM1d(0)
pM1d(1)	pM1d(1)	M_Afstands metastase	2.16.840.1.113883.2.4.3.11.60.40.4.10.3	pM1d(1)

«document»	rcrpM_DistantMetastasisCodelist		
Definitie	De uitbreiding naar metastase op afstand (M) voor een klinische of postchirurgische histologische pathologische classificatie in geval van een recidiverende tumor (na een ziektevrij interval).		
Datatype			
DCM::ValueSetBinding	Extensible		
DCM::ValueSetId	2.16.840.1.113883.2.4.3.11.60.40.2.4.27.27		
Opties			

rcrpM_AfstandsMetastasenCodelijst	OID: 2.16.840.1.113883.2.4.3.11.60.40.2.4.27
--	---

Concept Name	Concept Code	Coding System Name	Coding System OID	Description
rcM0	rcM0	M_Afstands metastase	2.16.840.1.113883.2.4.3.11.60.40.4.10.3	rcM0
rcM0(i+)	rcM0(i+)	M_Afstands metastase	2.16.840.1.113883.2.4.3.11.60.40.4.10.3	rcM0(i+)
rcM0(mol+)	rcM0(mol+)	M_Afstands metastase	2.16.840.1.113883.2.4.3.11.60.40.4.10.3	rcM0(mol+)
rcM1	rcM1	M_Afstands metastase	2.16.840.1.113883.2.4.3.11.60.40.4.10.3	rcM1
rcM1a	rcM1a	M_Afstands metastase	2.16.840.1.113883.2.4.3.11.60.40.4.10.3	rcM1a
rcM1a(0)	rcM1a(0)	M_Afstands metastase	2.16.840.1.113883.2.4.3.11.60.40.4.10.3	rcM1a(0)
rcM1a(1)	rcM1a(1)	M_Afstands metastase	2.16.840.1.113883.2.4.3.11.60.40.4.10.3	rcM1a(1)
rcM1b	rcM1b	M_Afstands metastase	2.16.840.1.113883.2.4.3.11.60.40.4.10.3	rcM1b
rcM1b(0)	rcM1b(0)	M_Afstands metastase	2.16.840.1.113883.2.4.3.11.60.40.4.10.3	rcM1b(0)

		metastase		
rcM1d(0)	rcM1d(0)	M_Afstands metastase	2.16.840.1.113883.2.4.3.11.60.40.4.10.3	rcM1d(0)
rcM1d(1)	rcM1d(1)	M_Afstands metastase	2.16.840.1.113883.2.4.3.11.60.40.4.10.3	rcM1d(1)
rpM1	rpM1	M_Afstands metastase	2.16.840.1.113883.2.4.3.11.60.40.4.10.3	rpM1
rpM1a	rpM1a	M_Afstands metastase	2.16.840.1.113883.2.4.3.11.60.40.4.10.3	rpM1a
rpM1a(0)	rpM1a(0)	M_Afstands metastase	2.16.840.1.113883.2.4.3.11.60.40.4.10.3	rpM1a(0)
rpM1a(1)	rpM1a(1)	M_Afstands metastase	2.16.840.1.113883.2.4.3.11.60.40.4.10.3	rpM1a(1)
rpM1b	rpM1b	M_Afstands metastase	2.16.840.1.113883.2.4.3.11.60.40.4.10.3	rpM1b
rpM1b(0)	rpM1b(0)	M_Afstands metastase	2.16.840.1.113883.2.4.3.11.60.40.4.10.3	rpM1b(0)
rpM1b(1)	rpM1b(1)	M_Afstands metastase	2.16.840.1.113883.2.4.3.11.60.40.4.10.3	rpM1b(1)
rpM1c	rpM1c	M_Afstands metastase	2.16.840.1.113883.2.4.3.11.60.40.4.10.3	rpM1c
rpM1c(0)	rpM1c(0)	M_Afstands metastase	2.16.840.1.113883.2.4.3.11.60.40.4.10.3	rpM1c(0)
rpM1c(1)	rpM1c(1)	M_Afstands metastase	2.16.840.1.113883.2.4.3.11.60.40.4.10.3	rpM1c(1)
rpM1d	rpM1d	M_Afstands metastase	2.16.840.1.113883.2.4.3.11.60.40.4.10.3	rpM1d
rpM1d(0)	rpM1d(0)	M_Afstands metastase	2.16.840.1.113883.2.4.3.11.60.40.4.10.3	rpM1d(0)
rpM1d(1)	rpM1d(1)	M_Afstands metastase	2.16.840.1.113883.2.4.3.11.60.40.4.10.3	rpM1d(1)

Legend	
Definitie	
Datatype	
Opties	

1.8 Example Instances

TNMTumorClassificatie		
datumTNMClassificatie	TNMVersie	Geïntegreerde TNM Waarde
01/08/2020	AJCC 8e editie	cT3N2M1
AnatomischStadium	PrognostischStadium	R_ResidueleTumor
Stage IV	Stage IV	--
Opmerking	HER2 negatief, ER negatief, PR negatief	
L_LymfatischeInvasie	Pn_PerineuraleInvasie	V_VeneuzeInvasie
--	--	--
Primaire Tumor		
m_PrimaireTumorAantal	T_tumor	G_DifferentiatiegraadTumor
1	cT3	G2
Afwijking		
AfwijkingNummer	Morfologie (ICD-O-3)	
1	Infiltrerend ductaal carcinoom, (8500/3)	
TumorLokalisatie - AnatomischeLocatie		
Locatie ICD-O-3	Locatie SNOMED CT	Lateraliteit
(C50.5) Laterale onderkwadrant van borst	structuur van laterale onderkwadrant van mamma (33564002)	Rechts
AfwijkingNummer	Morfologie (ICD-O-3)	
2	Fibroadenoom (9010/0)	
Regionale Lymfeklieren		
N_RegionaleLymfeklieren	cN2	
RegionaleLymfeklieren Localisatie - AnatomischeLocatie		
Locatie ICD-O-3	Locatie	Lateraliteit
C77.3 Infraclaviculaire lymfeklier	structuur van infraclaviculaire lymfeklier (9659009)	Rechts
RegionaleLymfeklieren Localisatie - AnatomischeLocatie		
Locatie ICD-O-3	Locatie	Lateraliteit
C77.3 Axillaire lymfeklier	structuur van nodus lymphoideus axillaris (68171009)	Rechts
AfstandsMetastasen		
M_Afstandsmetastasen	cM1	
AfstandsMetastasen Localisatie		
Locatie (ICD-O-3)	Locatie	Lateraliteit
C34.1 Bovenkwab van long	Structuur van lobus superior pulmonis (45653009)	Rechts

1.9 Instructions

From a generic TNM Classification towards a disease-specific TNM Classification

Development or implementation of a tumor-specific information model of the TNM Classification

manage the value sets as part of the management of the HCIMs (Health and Care Information Model). When a unique and international reference to the TNM Classification standard as codesystem and valuesets becomes available these can be amended in a next version of the HCIM.

Starting points from the perspective of the TNM Classification standard

- One TNM-classification per single organ, and one classification per side for paired organs. For example, when breast cancer involves a primary tumor in both breasts, there will be two instances of the classification with laterality 'left' for one breast and laterality 'right' for the other ('bilateral' is not allowed for paired organs).
- The HCIM does not only encompass the outcome of the TNM classification, but also the exact localization of the primary tumor(s), the positive lymph nodes, and metastases.
- In case of multiple primary tumors in the same organ, one should classify the tumor with the highest T-category, and mention the multiple presence or number of tumors between brackets. For example, T1 (m) or T2 (5). The lesion with the highest T-category determines the classification of the tumor. To distinguish between lesions and to represent each individual lesion, the HCIM has the code 'Lesion'. Each lesion has a number. The HCIM does not represent which lesion (e.g. 1, 2, or 3) has the highest T-category, since this is only clear after judgment by the health professional on the morphology and/or imaging.

Use of the UICC (<http://www.uicc.org/resources/tnm>) / AJCC

(<http://cancerstaging.org/references-tools/deskreferences/Pages/default.aspx>) version of the

Classification of Malignant Tumours.

- Although definitions and wording should not differ between the AJCC and UICC TNM classifications, some differences have regrettably crept in (for example: the definition of regional lymph nodes associated with carcinomas of the esophagus and endometrium). Therefore, the HCIM allows choosing between the UICC or AJCC version. Criteria within the TNM-classification system have changed over the years and resulted in various editions. As a result, a specific tumor stage may have a different prognosis, depending on the edition used. Furthermore, it is important to consider the consequences of improved treatment over time.
- Beside staging based on the UICC or AJCC classifications there is the 'Essential TNM'. This is a simplified version of the TNM, specifically developed for the representation of the occurrence of cancer in low-income and middle-income countries. These countries often lack the resources for early diagnosis, and make limited use of the TNM classification system (in these countries, cancer is generally detected in a very late stage). This special version of the TNM has not been taken into account while developing this HCIM. Furthermore, the use of the 'Essential TNM' is generally limited to acquire data for statistics related to the occurrence of certain malignancies in these countries.

Prefix and suffix are integrated in value sets

Although it would be possible to create separate value sets for the potential prefixes and suffixes associated with the T, N, and M items, we chose to facilitate the use of the model by integrating them in the T, N, and M value sets. This decision is based on the current insight that it prevents the creation of invalid combinations.

Prefix

- **c:** Clinical classification, based on data prior to treatment, such as clinical examination, imaging, endoscopy, biopsies, surgical exploration or examination under anesthesia, and other types of clinical examination.
- **yc:** Classification performed during or following initial multimodal therapy (non-surgical).
- **p:** Post-surgical histopathological classification. This is based on data prior to treatment, such as pathology with pathological examination after surgical treatment.
- **yp:** Classification performed during or after multimodal treatment (including surgical treatment).
- **rc:** Clinical classification in case of a recurrent tumor (after a disease-free interval).

- (mol+): positive non-morphological findings for isolated tumor cells (ITC)
- (0): without elevated (LDH)
- (1): with elevated (LDH)

1.10 Interpretation

1.11 Care Process

1.12 Example of the Instrument

1.13 Constraints

1.14 Issues

Usability of this HCIM as well as disease-specific code lists are created in the first pilot(s), planned for the summer of 2020. During these projects, IKNL will provide the maintenance for these code lists. Once the pilot projects are completed, the findings will be included as change requests in the regular maintenance process of the HCIM center.

1.15 References

1. TNM Classification of Malignant Tumours, 8th Edition - James D. Brierley (Editor), Mary K. Gospodarowicz (Editor), Christian Wittekind (Editor)- International Union Against Cancer (UICC) - ISBN 9781119263562 (epub)
2. <https://www.uicc.org/resources/tnm> [ONLINE geraadpleegd: 04 mei 2020]
3. International Classification of diseases for oncology (ICD-O) – 3rd edition, 1st revision – April 2000 - Constance Percy, Andrew Jack, Kanagaratnam Shanmugaratnam, Leslie Sobin, D Max Parkin, David Whelan – World Health Organisation – WHO library cataloguing – ISBN 978 92 4 069212 1

1.16 Functional Model

1.17 Traceability to other Standards

1.18 Disclaimer

The Health and Care Information Models (a.k.a Clinical Building Block) has been made in collaboration with several different parties in healthcare. These parties asked Nictiz to manage good maintenance and development of the information models. Hereafter, these parties and Nictiz are referred to as

Information Model to which or from which a hyperlink is referred. In the event of contradiction mentioned Health and Care Information Model documents and files, the most recent and highest in the listed order in the revisions will indicate the priority of the documents in question. If information included in the digital version of a Health and Care Information Model is also distributed in written version will be leading in case of textual differences. This will apply if both have the same number and date. A definitive version has priority over a draft version. A revised version has priority over previous versions.

1.19 Terms of Use

The user may use the Health and Care Information Models without limitations. The copyright provisions in the paragraph concerned apply to copying, distributing and passing on the Health and Care Information Models.

1.20 Copyrights

A Health and Care Information Model qualifies as a work within the meaning of Section 10 of the Copyright Act (Auteurswet). Copyrights protect the Health and Care Information Models and these rights belong to the cooperating parties.

The user may copy, distribute and pass on the information in this Health and Care Information Model under the conditions that apply for Creative Commons license Attribution-NonCommercial-ShareAlike 3.0 Netherlands (CC BY-NC-SA-3.0).

The content is available under Creative Commons Attribution-NonCommercial-ShareAlike 3.0 (Netherlands) (<http://creativecommons.org/licenses/by-nc-sa/3.0/nl/>)

This does not apply to information from third parties that sometimes is used and / or referred to in the Health and Care Information Model, for example to an international medical terminology system. Any rights that protect this information are not owned by the cooperating parties but by those third parties.

Nictiz is the independent national competence centre for electronic exchange of health and care information. The activities of Nictiz include the targeted development and management of information standards at the national level and in partnership with the stakeholders in healthcare. Nictiz advises these parties on all aspects of information exchange and identifies (future) national and international developments.

Nictiz

P.O. Box 19121
2500 CC Den Haag
Oude Middenweg 55
2491 AC Den Haag

070-3173450
info@nictiz.nl
www.nictiz.nl

