

# Health&Care Information Model: nl.zorg.Infuus

Final

Managed by:

Better healthcare  
through better IT



# Content

<b>1. nl.zorg.Infuus-v3.0</b> .....	<b>3</b>
1.1 Revision History .....	3
1.2 Concept .....	3
1.3 Mindmap .....	3
1.4 Purpose .....	4
1.5 Patient Population .....	4
1.6 Evidence Base .....	4
1.7 Information Model .....	4
1.8 Example Instances .....	9
1.9 Instructions .....	11
1.10 Interpretation .....	11
1.11 Care Process .....	11
1.12 Example of the Instrument .....	11
1.13 Constraints .....	11
1.14 Issues .....	11
1.15 References .....	11
1.16 Functional Model .....	11
1.17 Traceability to other Standards .....	11
1.18 Disclaimer .....	11
1.19 Terms of Use .....	12
1.20 Copyrights .....	12

# 1. nl.zorg.Infuus-v3.0

DCM::CoderList	Werkgroep RadB Verpleegkundige Gegevens
DCM::ContactInformation.Address	*
DCM::ContactInformation.Name	*
DCM::ContactInformation.Telecom	*
DCM::ContentAuthorList	Werkgroep RadB Verpleegkundige Gegevens
DCM::CreationDate	3-4-2014
DCM::DeprecatedDate	
DCM::DescriptionLanguage	nl
DCM::EndorsingAuthority.Address	
DCM::EndorsingAuthority.Name	PM
DCM::EndorsingAuthority.Telecom	
DCM::Id	2.16.840.1.113883.2.4.3.11.60.40.3.10.2
DCM::KeywordList	Infuus, Katheter, Toedieningssysteem
DCM::LifecycleStatus	Final
DCM::ModelerList	Werkgroep RadB Verpleegkundige Gegevens
DCM::Name	nl.zorg.Infuus
DCM::PublicationDate	1-5-2016
DCM::PublicationStatus	Published
DCM::ReviewerList	Projectgroep RadB Verpleegkundige Gegevens & Kerngroep Registratie aan de Bron
DCM::RevisionDate	8-9-2015
DCM::Superseeds	nl.nfu.Infuus-v1.0
DCM::Version	3.0

## 1.1 Revision History

Publicatieversie 1.0 (01-07-2015)

Publicatieversie 3.0 (01-05-2016)

Bevat: ZIB-453

## 1.2 Concept

A drip is a machine that slowly injects fluid into a blood vessel. The drip has a number of components.

The drip contains:

- the (peripheral) cannula or the (central) catheter put into the patient peripherally or centrally;
- the administering system connected to the cannula/catheter allowing the administered fluid to run;
- the drip bag containing the fluid.

Multiple administering systems may be connected to one cannula/catheter. Furthermore, a central venous catheter may have multiple lumens.

Arterial and epidural catheters also exist in addition to venous catheters.

## 1.3 Mindmap

## 1.4 Purpose

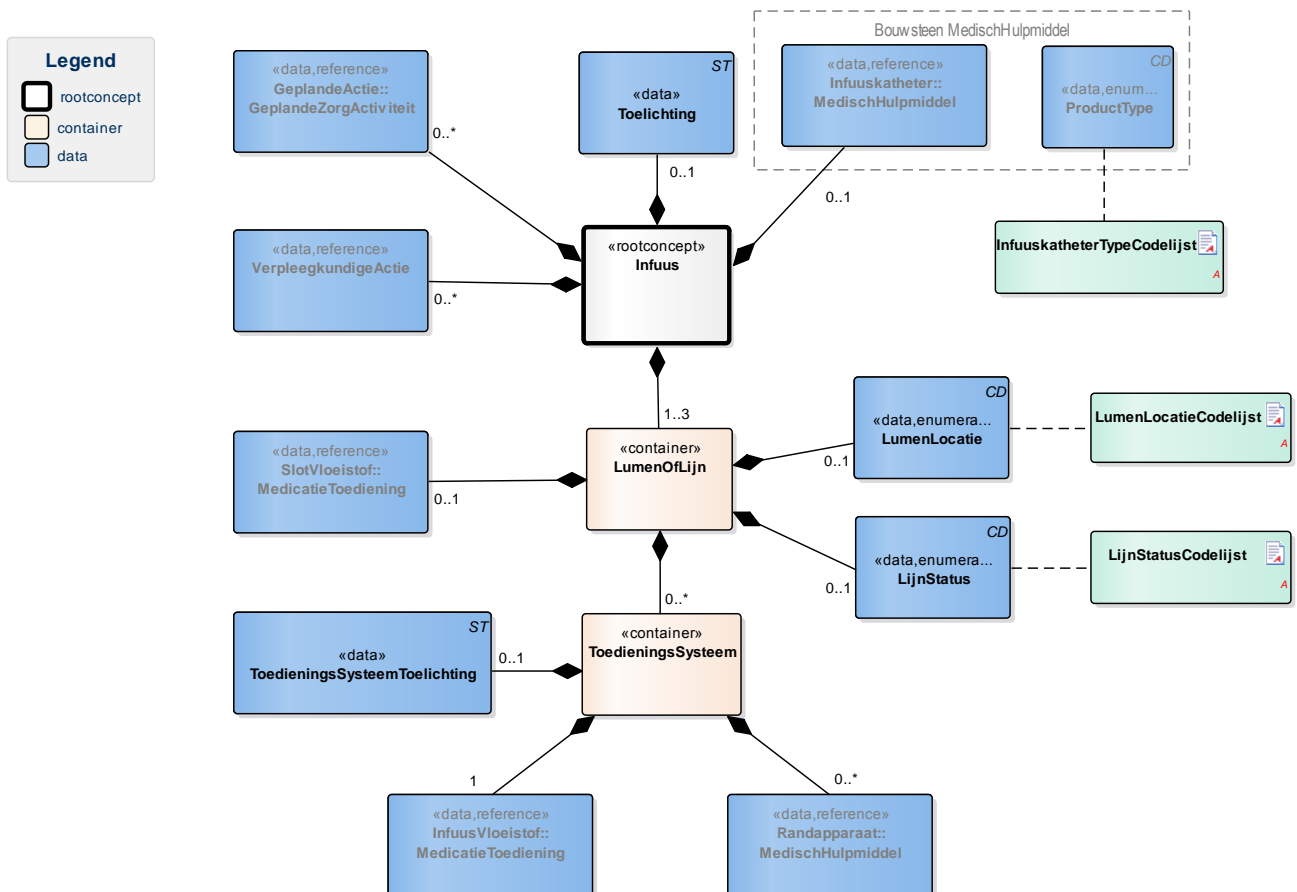
The purpose of a drip is usually to administer fluid and/or medication.

Information on present drips is recorded to inform other healthcare providers. This information is of importance in determining the care required for the patient and in safely administering medication. In a transfer situation, the information offers the option to realize continuity of care by organizing specific expertise and materials in advance, for example.

## 1.5 Patient Population

## 1.6 Evidence Base

## 1.7 Information Model



«rootconcept»	Infuus
Alias	EN: Drip
Definition	Root concept of the Drip building block. This root concept contains all data elements of the Drip building block.
Datatype	

<b>DCM::DefinitionCode</b>	NL-CM:10.2.1	
<b>Options</b>		

<b>«data»</b>	<b>Infuuskatheter::MedischHulpmiddel</b>	
<b>Alias</b>	EN: DripCatheter::MedicalAid	
<b>Definition</b>	DripCatheter describes the presence of a drip catheter. If this is the case, the date of placement and insertion opening can be described in addition to the type of catheter. Furthermore, it offers the option to record identification information of the cannula/catheter if desired.	
<b>Datatype</b>		
<b>DCM::DefinitionCode</b>	NL-CM:10.2.3	
<b>DCM::ReferencedDefinitionCode</b>	NL-CM:10.1.1	This is a reference to concept MedischHulpmiddel in information model MedischHulpmiddel.
<b>Options</b>		

<b>«data»</b>	<b>ProductType</b>	
<b>Alias</b>	EN: ProductType	
<b>Definition</b>	A description of the type of cannula/catheter.	
<b>Datatype</b>	CD	
<b>DCM::DefinitionCode</b>	NL-CM:10.1.3	
<b>DCM::ValueSet</b>	InfuuskatheterTypeCodelijst	OID: 2.16.840.1.113883.2.4.3.11.60.40.2.10.2.1
<b>Options</b>		

<b>«data»</b>	<b>VerpleegkundigeActie</b>	
<b>Alias</b>	EN: NursingProcedure	
<b>Definition</b>	A nursing procedure/point of attention in providing the drip and administering any fluid.	
<b>Datatype</b>		
<b>DCM::DefinitionCode</b>	NL-CM:10.2.4	
<b>DCM::ReferencedDefinitionCode</b>	NL-CM:14.2.9	This is a reference to concept VerpleegkundigeActie in information model VerpleegkundigeInterventie.
<b>Options</b>		

<b>«data»</b>	<b>GeplandeActie::GeplandeZorgActiviteit</b>	
<b>Alias</b>	EN: PlannedProcedure::PlannedCareActivity	
<b>Definition</b>	A planned (nursing) procedure or 'clinical reminder' in providing the drip, in which information can be included such as the date on which the drip (cannula and/or drip system) must be replaced.	
<b>Datatype</b>		
<b>DCM::DefinitionCode</b>	NL-CM:10.2.5	
<b>DCM::ReferencedDefinitionCode</b>	NL-CM:16.1.1	This is a reference to concept GeplandeZorgActiviteit in information model OverdrachtGeplandeZorgActiviteit.
<b>Options</b>		

<b>«data»</b>	<b>Toelichting</b>	
<b>Alias</b>	EN: Explanation	
<b>Definition</b>	An explanation of the drip.	

<b>Datatype</b>	ST
<b>DCM::DefinitionCode</b>	NL-CM:10.2.8
<b>DCM::DefinitionCode</b>	LOINC: 48767-8 Annotation comment
<b>Options</b>	

<b>«container»</b>	<b>LumenOfLijn</b>
<b>Alias</b>	EN: LumenOrLine
<b>Definition</b>	Container of the LumenOrLine concept. This container contains all data elements of the LumenOrLine concept. Central lines can contain one or more lumens; peripheral drips do not have lumens and only have one line.
<b>Datatype</b>	
<b>DCM::DefinitionCode</b>	NL-CM:10.2.10
<b>Options</b>	

<b>«data»</b>	<b>LijnStatus</b>
<b>Alias</b>	EN: LineStatus
<b>Definition</b>	LineStatus is used to indicate whether it is a running drip, whether it has been capped, or has been fitted with a heparin lock, etc.
<b>Datatype</b>	CD
<b>DCM::DefinitionCode</b>	NL-CM:10.2.9
<b>DCM::ValueSet</b>	LijnStatusCodelijst OID: 2.16.840.1.113883.2.4.3.11.60.40.2.10.2.3
<b>Options</b>	

<b>«data»</b>	<b>LumenLocatie</b>
<b>Alias</b>	EN: LumenLocation
<b>Definition</b>	For central venous catheters with multiple lumens, LumenLocation indicates the relative position of the lumen with respect to the insertion opening.
<b>Datatype</b>	CD
<b>DCM::DefinitionCode</b>	NL-CM:10.2.11
<b>DCM::ValueSet</b>	LumenLocatieCodelijst OID: 2.16.840.1.113883.2.4.3.11.60.40.2.10.2.2
<b>Options</b>	

<b>«data»</b>	<b>SlotVloeistof::MedicatieToediening</b>
<b>Alias</b>	EN: LockFluid::MedicationAdministration
<b>Definition</b>	The description of the fluid used as an anticoagulation lock, such as heparin.
<b>Datatype</b>	
<b>DCM::DefinitionCode</b>	NL-CM:10.2.13
<b>DCM::ReferencedDefinitionCode</b>	NL-CM:9.3.1 This is a reference to concept MedicatieToediening in information model MedicatieToediening.
<b>Options</b>	

<b>«container»</b>	<b>ToedieningsSysteem</b>
<b>Alias</b>	EN: AdministeringSystem

<b>Definition</b>	Container of the AdministeringSystem concept. This container contains all data elements of the AdministeringSystem concept. The administering system contains the entire system making the fluid run from the drip bag via the cannula/catheter to the patient. This also includes any three-way valves/connecting joints used.	
<b>Datatype</b>		
<b>DCM::DefinitionCode</b>	NL-CM:10.2.7	
<b>Options</b>		

<b>«data»</b>	<b>InfuusVloeistof::MedicatieToediening</b>	
<b>Alias</b>	EN: DripFluid::MedicationAdministration	
<b>Definition</b>	The description of the fluid administered through the drip and the dose administered, as given in the medication prescription.	
<b>Datatype</b>		
<b>DCM::DefinitionCode</b>	SNOMED CT: 440132002 Parenteral dosage form product	
<b>DCM::DefinitionCode</b>	NL-CM:10.2.2	
<b>DCM::ExampleValue</b>	1 liter glucose 5% per 24 uur	
<b>DCM::ReferencedDefinitionCode</b>	NL-CM:9.3.1	This is a reference to concept MedicatieToediening in information model MedicatieToediening.
<b>Options</b>		

<b>«data»</b>	<b>Randapparaat::MedischHulpmiddel</b>	
<b>Alias</b>	EN: Peripheral::MedicalAid	
<b>Definition</b>	A description of medical aids required for administering the drip fluid and placing the catheter, such as a volumetric drip pump, syringe and drip bag.	
<b>Datatype</b>		
<b>DCM::DefinitionCode</b>	NL-CM:10.2.6	
<b>DCM::ReferencedDefinitionCode</b>	NL-CM:10.1.1	This is a reference to concept MedischHulpmiddel in information model MedischHulpmiddel.
<b>Options</b>		

<b>«data»</b>	<b>ToedieningsSysteemToelichting</b>	
<b>Alias</b>	EN: AdministeringSystemExplanation	
<b>Definition</b>	An explanation of the administering system.	
<b>Datatype</b>	ST	
<b>DCM::DefinitionCode</b>	NL-CM:10.2.12	
<b>DCM::DefinitionCode</b>	LOINC: 48767-8 Annotation comment	
<b>Options</b>		

<b>«document»</b>	<b>LijnStatusCodelijst</b>	
<b>Alias</b>		
<b>Definition</b>		
<b>Datatype</b>		
<b>Options</b>		
<b>LijnStatusCodelijst</b>	<b>OID: 2.16.840.1.113883.2.4.3.11.60.40.2.10.2.3</b>	

Concept Name	Concept Code	Coding Syst. Name	Coding System OID	Description
Lopend	LNP	LijnStatus	2.16.840.1.113883.2.4.3.11.60.40.4.12.1	Lopend
Afgedopt	DOP	LijnStatus	2.16.840.1.113883.2.4.3.11.60.40.4.12.1	Afgedopt
Heparineslot	HEP	LijnStatus	2.16.840.1.113883.2.4.3.11.60.40.4.12.1	Heparineslot
Zoutspoelingslot	ZOU	LijnStatus	2.16.840.1.113883.2.4.3.11.60.40.4.12.1	Zoutspoelingslot
Other	OTH	NullFlavor	2.16.840.1.113883.5.1008	Anders

«document» LumenLocatieCodelijst				
<b>Alias</b>				
<b>Definition</b>				
<b>Datatype</b>				
<b>Options</b>				
<b>LumenLocatieCodelijst</b>			<b>OID: 2.16.840.1.113883.2.4.3.11.60.40.2.10.2.2</b>	
Concept Name	Concept Code	Coding Syst. Name	Coding System OID	Description
Proximal	40415009	SNOMED CT	2.16.840.1.113883.6.96	Proximaal
Medial	255561001	SNOMED CT	2.16.840.1.113883.6.96	Mediaal
Distal	46053002	SNOMED CT	2.16.840.1.113883.6.96	Distaal

«document» InfuuskatheterTypeCodelijst				
<b>Alias</b>				
<b>Definition</b>				
<b>Datatype</b>				
<b>Options</b>				
<b>InfuuskatheterTypeCodelijst</b>			<b>OID: 2.16.840.1.113883.2.4.3.11.60.40.2.10.2.1</b>	
Concept Name	Concept Code	Coding Syst. Name	Coding System OID	Description
Peripheral intravenous catheter	82449006	SNOMED CT	2.16.840.1.113883.6.96	Perifeer intraveneus infuus
Central venous catheter	52124006	SNOMED CT	2.16.840.1.113883.6.96	Centraal veneuze katheter
Epidural catheter	30610008	SNOMED CT	2.16.840.1.113883.6.96	Epidurale katheter
Arterial catheter	303727009	SNOMED CT	2.16.840.1.113883.6.96	Arteriële katheter
Implantable venous catheter	102318003	SNOMED CT	2.16.840.1.113883.6.96	Port-a-cath
Haemodialysis catheter	450866001	SNOMED CT	2.16.840.1.113883.6.96	Hemodialyse katheter



Other	OTH	NullFlavor	2.16.840.1.113883.5.1008	Anders
-------	-----	------------	--------------------------	--------

## 1.8 Example Instances

Infuus	
Infuuskatheter	
ProductType	Centraal veneuze katheter
BeginDatum	30-11-2014
HulpmiddelAnatomischeLocatie	Vena subclavia links
VerpleegkundigeActie	
Activiteit	Insteekopening controleren.
GeplandeActie	
Activiteit	Op 31-12-2014 katheter verschonen.
LumenOfLijn	
LumenLocatie	Proximaal
LijnStatus	Lopend
ToedieningsSysteem	
ToedieningssysteemToelichting	-
Randapparaat	
ProductType	Infuuspomp
InfuusVloeistof	
ProductNaam	TPV
Inloopsnelheid	1 liter per 24 uur
LumenOfLijn	
Lumen locatie	Mediaal
LijnStatus	Zoutspoelingsslot
SlotVloeistof	
ProductNaam	NaCl 0.9 %
Keerdosis	5ml
LumenOfLijn	
LumenLocatie	Distaal
LijnStatus	Lopend
ToedieningsSysteem	
ToedieningssysteemToelichting	-
Randapparaat	
ProductType	Infuuspomp
InfuusVloeistof	
ProductNaam	NaCl 0.9 %
Inloopsnelheid	500 ml per 24 uur
Toelichting	-

Infuus	
Infuuskatheter	
ProductType	Perifeer intraveneus infuus
BeginDatum	28-11-2014
HulpmiddelAnatomischeLocatie	Linker onderarm
VerpleegkundigeActie	
Activiteit	Insteekopening controleren.
GeplandeActie	
Activiteit	Op 2-12 systeem verschonen.
LumenOfLijn	
LumenLocatie	-
LijnStatus	Lopend
ToedieningsSysteem	
ToedieningssysteemToelichting	-
Randapparaat	
ProductType	Spuitpomp (perfusor)
InfuusVloeistof	
ProductNaam	NaCl 0,9% + medicatie 5000 E heparine (totaal 48ml)
Inloopsnelheid	2ml per uur
ToedieningsSysteem	
ToedieningssysteemToelichting	-
Randapparaat	
ProductType	Infuuspomp
InfuusVloeistof	
ProductNaam	NaCl/gluc
Inloopsnelheid	500 ml / 24 uur
Toelichting	-

## **1.9 Instructions**

## **1.10 Interpretation**

## **1.11 Care Process**

## **1.12 Example of the Instrument**

## **1.13 Constraints**

## **1.14 Issues**

## **1.15 References**

1. Verpleegkundige Intensive Care Protocollen [Online] Beschikbaar op:  
<http://ic.venvn.nl/Downloads/Verpleegkundige-Intensive-Care-Protocollen> [Geraadpleegd: 13 februari 2015]

## **1.16 Functional Model**

## **1.17 Traceability to other Standards**

## **1.18 Disclaimer**

This Clinical Building Block has been made in collaboration with several different parties in healthcare. These parties asked Nictiz to manage good maintenance and development of the information models. Hereafter, these parties and Nictiz are referred to as the collaborating parties. The collaborating parties paid utmost attention to the reliability and topicality of the data in these Health and Care Information Model (a.k.a Clinical Building Block)s. Omissions and inaccuracies may however occur. The collaborating parties are not liable for any damages resulting from omissions or inaccuracies in the information provided, nor are they liable for damages resulting from problems caused by or inherent to distributing information on the internet, such as malfunctions, interruptions, errors or delays in information or services provide by the parties to you

or by you to the parties via a website or via e-mail, or any other digital means. The collaborating parties will also not accept liability for any damages resulting from the use of data, advice or ideas provided by or on behalf of the parties by means of this Clinical Building Block. The parties will not accept any liability for the content of information in this Clinical Building Block to which or from which a hyperlink is referred. In the event of contradictions in mentioned Clinical Building Block documents and files, the most recent and highest version of the listed order in the revisions will indicate the priority of the documents in question. If information included in the digital version of this Clinical Building Block is also distributed in writing, the written version will be leading in case of textual differences. This will apply if both have the same version number and date. A definitive version has priority over a draft version. A revised version has priority over previous versions.

## **1.19 Terms of Use**

The user may use the information in this Clinical Building Block without limitations. The copyright provisions in the paragraph concerned apply to copying, distributing and passing on information from this Clinical Building Block.

## **1.20 Copyrights**

The user may copy, distribute and pass on the information in this Clinical Building Block under the conditions that apply for Creative Commons license Attribution-NonCommercial-ShareAlike 3.0 Netherlands (CC BY-NC-SA-3.0). The content is available under Creative Commons Attribution-NonCommercial-ShareAlike 3.0 (see also <http://creativecommons.org/licenses/by-nc-sa/3.0/nl/>)