

# Health & Care Information Model:

## nl.zorg.part.ContactInformation-v1.3.1

Status: Final

Release: 2024

Release status: Prepublished

Managed by:



# Content

<b>1. nl.zorg.part.ContactInformation-v1.3.1</b> .....	<b>3</b>
1.1 Revision History.....	3
1.2 Concept .....	3
1.3 Mindmap .....	4
1.4 Purpose.....	4
1.5 Patient Population .....	4
1.6 Evidence Base .....	4
1.7 Information Model .....	4
1.8 Example Instances.....	7
1.9 Instructions.....	7
1.10 Interpretation .....	7
1.11 Care Process .....	7
1.12 Example of the Instrument .....	7
1.13 Constraints.....	7
1.14 Issues .....	7
1.15 References .....	7
1.16 Functional Model .....	7
1.17 Traceability to other Standards.....	8
1.18 Disclaimer .....	8
1.19 Terms of Use .....	8
1.20 Copyrights.....	8

# 1. nl.zorg.part.ContactInformation-v1.3.1

DCM::CoderList	Kerngroep Registratie aan de Bron
DCM::ContactInformation.Address	*
DCM::ContactInformation.Name	*
DCM::ContactInformation.Telecom	*
DCM::ContentAuthorList	Projectgroep Generieke Overdrachtsgegevens & Kerngroep Registratie aan de Bron
DCM::CreationDate	3-7-2017
DCM::DeprecatedDate	
DCM::DescriptionLanguage	nl
DCM::EndorsingAuthority.Address	
DCM::EndorsingAuthority.Name	PM
DCM::EndorsingAuthority.Telecom	
DCM::Id	2.16.840.1.113883.2.4.3.11.60.40.3.20.6
DCM::KeywordList	
DCM::LifecycleStatus	Final
DCM::ModelerList	Kerngroep Registratie aan de Bron
DCM::Name	nl.zorg.part.Contactgegevens
DCM::PublicationDate	15-04-2024
DCM::PublicationStatus	Prepublished
DCM::ReviewerList	Projectgroep Generieke Overdrachtsgegevens & Kerngroep Registratie aan de Bron
DCM::RevisionDate	11-09-2023
DCM::Supersedes	nl.zorg.part.Contactgegevens-v1.3
DCM::Version	1.3.1
HCIM::PublicationLanguage	EN

## 1.1 Revision History

Publicatieversie 1.0 (04-09-2017)

Bevat: ZIB-492.

Publicatieversie 1.1 (06-07-2019)

Bevat: ZIB-760.

Publicatieversie 1.1.1 (31-01-2020)

Bevat: ZIB-760, ZIB-900.

Publicatieversie 1.2 (01-09-2020)

Bevat: ZIB-958.

Publicatieversie 1.2.1 (01-12-2021)

Bevat: ZIB-1436.

Publicatieversie 1.3 (10-06-2022)

Bevat: ZIB-1070, ZIB-1652.

Publicatieversie 1.3.1 (15-10-2023)

Bevat: ZIB-1807.

## 1.2 Concept

Contact information includes a person's telephone numbers and e-mail addresses or organization. This is a partial information model.

## 1.3 Mindmap

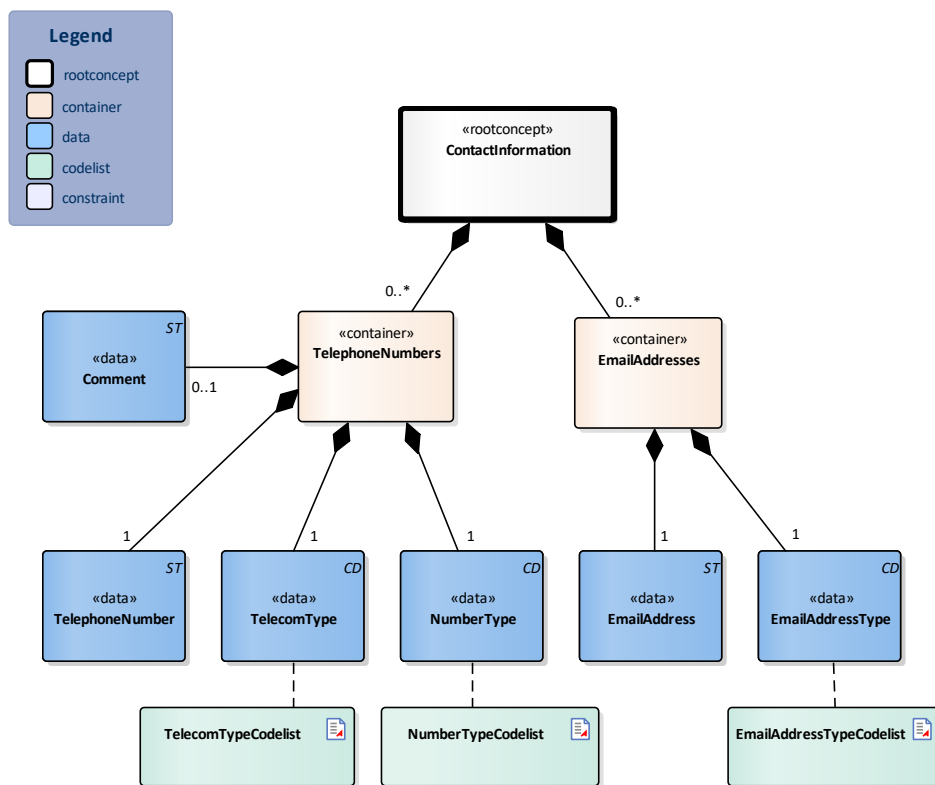
## 1.4 Purpose

Contact information is used to contact a person or organization.

## 1.5 Patient Population

## 1.6 Evidence Base

## 1.7 Information Model



«rootconcept»	ContactInformation
Definitie	Root concept of the ContactInformation partial information model. This root concept contains all data elements of the ContactInformation partial information model.
Datatype	
DCM::ConceptId	NL-CM:20.6.1
Opties	

«container»	TelephoneNumbers
Definitie	Container of the TelephoneNumbers concept. This container contains all data elements of the TelephoneNumbers concept.
Datatype	
DCM::ConceptId	NL-CM:20.6.2
Opties	

«data»	TelephoneNumber	
Definitie	The person's telephone number.	
Datatype	ST	
DCM::ConceptId	NL-CM:20.6.4	
DCM::ExampleValue	+31612341234	
Opties		

«data»	TelecomType	
Definitie	The telecom or device type that the telephone number is connected to.	
Datatype	CD	
DCM::ConceptId	NL-CM:20.6.5	
DCM::ValueSet	TelecomTypeCodelist	OID: 2.16.840.1.113883.2.4.3.11.60.40.2.20.6.1
Opties		

«data»	NumberType	
Definitie	NumberType indicates whether the number is a landline, temporary, work telephone number.	
Datatype	CD	
DCM::ConceptId	NL-CM:20.6.6	
DCM::ExampleValue	Mobiel telefoonnummer	
DCM::ValueSet	NumberTypeCodelist	OID: 2.16.840.1.113883.2.4.3.11.60.40.2.20.6.2
Opties		

«data»	Comment	
Definitie	Explanation about the telephone number and how to use it. It can be indicated, for example, that it is a department number (for healthcare professionals) or that availability by phone is only possible during a specified part of the day.	
Datatype	ST	
DCM::ConceptId	NL-CM:20.6.9	
DCM::DefinitionCode	LOINC: 48767-8 Annotation comment	
Opties		

«container»	EmailAddresses	
Definitie	Container of the E-mailAddresses concept. This container contains all data elements of the E-mailAddresses concept.	
Datatype		
DCM::ConceptId	NL-CM:20.6.3	
Opties		

«data»	EmailAddress	
Definitie	The person's e-mail address	
Datatype	ST	
DCM::ConceptId	NL-CM:20.6.7	
Opties		

«data»	EmailAddressType	
Definitie	E-mailAddressType indicates whether it is a private or business e-mail address.	
Datatype	CD	
DCM::ConceptId	NL-CM:20.6.8	

DCM::ExampleValue	Zakelijk e-mailadres	
DCM::ValueSet	EmailAddressTypeCodelist	OID: 2.16.840.1.113883.2.4.3.11.60.40.2.20.6.3
Opties		

«document»		TelecomTypeCodelist	
Definitie			
Datatype			
DCM::ValueSetBinding	Extensible		
DCM::ValueSetId	2.16.840.1.113883.2.4.3.11.60.40.2.20.6.1		
HCIM::ValueSetLanguage	EN		
Opties			

TelecomTypeCodelist				OID: 2.16.840.1.113883.2.4.3.11.60.40.2.20.6.1
Concept Name	Concept Code	Coding Syst. Name	Coding System OID	Description
Land Line	LL	TelecomDeviceTypes	2.16.840.1.113883.2.4.3.11.60.40.4.22.1	Vast telefoonnummer
Fax	FAX	TelecomDeviceTypes	2.16.840.1.113883.2.4.3.11.60.40.4.22.1	Fax
Mobile Contact	MC	AddressUse	2.16.840.1.113883.5.1119	Mobiel telefoonnummer
Pager	PG	AddressUse	2.16.840.1.113883.5.1119	Pieper

«document»		NumberTypeCodelist	
Definitie			
Datatype			
DCM::ValueSetBinding	Extensible		
DCM::ValueSetId	2.16.840.1.113883.2.4.3.11.60.40.2.20.6.2		
HCIM::ValueSetLanguage	EN		
Opties			

NummerSoortCodelist				OID: 2.16.840.1.113883.2.4.3.11.60.40.2.20.6.2
Concept Name	Concept Code	Coding Syst. Name	Coding System OID	Description
Primary Home	HP	AddressUse	2.16.840.1.113883.5.1119	Privé telefoonnummer
Temporary Address	TMP	AddressUse	2.16.840.1.113883.5.1119	Tijdelijk telefoonnummer
Work Place	WP	AddressUse	2.16.840.1.113883.5.1119	Zakelijk telefoonnummer
Emergencycontact	EC	AddressUse	2.16.840.1.113883.5.1119	Spoednummer

«document»		EmailAddressTypeCodelist	
Definitie			
Datatype			
DCM::ValueSetBinding	Extensible		
DCM::ValueSetId	2.16.840.1.113883.2.4.3.11.60.40.2.20.6.3		
HCIM::ValueSetLanguage	EN		
Opties			
EmailSoortCodelist		OID: 2.16.840.1.113883.2.4.3.11.60.40.2.20.6.3	

ConceptName	Code	Code System	Code System OID	Description
Primary Home	HP	AddressUse	2.16.840.1.113883.5.1119	Privé e-mailadres
Work Place	WP	AddressUse	2.16.840.1.113883.5.1119	Zakelijk e-mailadres

Legend	
Definitie	
Datatype	
Opties	

## 1.8 Example Instances

Contactinformatie	
<b>Telefoonnummers</b>	
Telefoonnummer	+31611234567
TelecomType	Mobiel telefoonnummer
NummerSoort	Zakelijk telefoonnummer
<b>EmailAdressen</b>	
EmailAdres	giesput@myweb.nl
EmailSoort	Privé e-mailadres

## 1.9 Instructions

### 1.10 Interpretation

### 1.11 Care Process

### 1.12 Example of the Instrument

### 1.13 Constraints

### 1.14 Issues

### 1.15 References

### 1.16 Functional Model

### 1.17 Traceability to other Standards

## 1.18 Disclaimer

The Health and Care Information Models (a.k.a Clinical Building Block) has been made in collaboration with several different parties in healthcare. These parties asked Nictiz to manage good maintenance and development of the information models. Hereafter, these parties and Nictiz are referred to as the collaborating parties. The collaborating parties paid utmost attention to the reliability and topicality of the data in these Health and Care Information Models. Omissions and inaccuracies may however occur. The collaborating parties are not liable for any damages resulting from omissions or inaccuracies in the information provided, nor are they liable for damages resulting from problems caused by or inherent to distributing information on the internet, such as malfunctions, interruptions, errors or delays in information or services provide by the parties to you or by you to the parties via a website or via e-mail, or any other digital means. The collaborating parties will also not accept liability for any damages resulting from the use of data, advice or ideas provided by or on behalf of the parties by means of the Health and Care Information Models. The parties will not accept any liability for the content of information in this Health and Care Information Model to which or from which a hyperlink is referred. In the event of contradictions in mentioned Health and Care Information Model documents and files, the most recent and highest version of the listed order in the revisions will indicate the priority of the documents in question. If information included in the digital version of a Health and Care Information Model is also distributed in writing, the written version will be leading in case of textual differences. This will apply if both have the same version number and date. A definitive version has priority over a draft version. A revised version has priority over previous versions.

## 1.19 Terms of Use

The user may use the Health and Care Information Models without limitations. The copyright provisions in the paragraph concerned apply to copying, distributing and passing on the Health and Care Information Models.

## 1.20 Copyrights

A Health and Care Information Model qualifies as a work within the meaning of Section 10 of the Copyright Act (Auteurswet). Copyrights protect the Health and Care Information Models and these rights are owned by the cooperating parties.

The user may copy, distribute and pass on the information in this Health and Care Information Model under the conditions that apply for Creative Commons license Attribution-NonCommercial-ShareAlike 3.0 Netherlands (CC BY-NC-SA-3.0).

The content is available under Creative Commons Attribution-NonCommercial-ShareAlike 3.0 (see also <http://creativecommons.org/licenses/by-nc-sa/3.0/nl/>)

This does not apply to information from third parties that sometimes is used and / or referred to in a Health and Care Information Model, for example to an international medical terminology system. Any (copyright) rights that protect this information are not owned by the cooperating parties but by those third parties.



Nictiz is the independent national competence centre for electronic exchange of health and care information. The activities of Nictiz include the targeted development and management of information standards at the request of and in partnership with the stakeholders in healthcare. Nictiz advises these parties on all aspects of information exchange and identifies (future) national and international developments.

**Nictiz**

P.O. Box 19121  
2500 CC Den Haag  
Oude Middenweg 55  
2491 AC Den Haag

070-3173450  
[info@nictiz.nl](mailto:info@nictiz.nl)  
[www.nictiz.nl](http://www.nictiz.nl)

