

Health & Care Information Model: nl.zorg.Betaler

Final

Managed by:

Better health
through better IT

Nictiz 



Content

| | | |
|------|--------------------------------------|----|
| 1. | nl.zorg.Betaler-v3.0 | 4 |
| 1.1 | Revision History..... | 4 |
| 1.2 | Concept | 4 |
| 1.3 | Mindmap..... | 5 |
| 1.4 | Purpose | 5 |
| 1.5 | Patient Population | 5 |
| 1.6 | Evidence Base..... | 5 |
| 1.7 | Information Model | 5 |
| 1.8 | Example Instances | 10 |
| 1.9 | Instructions | 10 |
| 1.10 | Interpretation | 11 |
| 1.11 | Care Process..... | 11 |
| 1.12 | Example of the Instrument..... | 11 |
| 1.13 | Constraints | 11 |
| 1.14 | Issues | 11 |
| 1.15 | References | 11 |
| 1.16 | Functional Model | 11 |
| 1.17 | Traceability to other Standards..... | 11 |
| 1.18 | Disclaimer | 11 |
| 1.19 | Terms of Use | 12 |
| 1.20 | Copyrights | 12 |

1. nl.zorg.Betaler-v3.0

| | |
|---------------------------------|--|
| DCM::CoderList | Kerngroep Registratie aan de Bron |
| DCM::ContactInformation.Address | * |
| DCM::ContactInformation.Name | * |
| DCM::ContactInformation.Telecom | * |
| DCM::ContentAuthorList | Projectgroep Generieke Overdrachtsgegevens & Kerngroep Registratie aan de Bron |
| DCM::CreationDate | 23-11-2012 |
| DCM::DeprecatedDate | |
| DCM::DescriptionLanguage | nl |
| DCM::EndorsingAuthority.Address | |
| DCM::EndorsingAuthority.Name | PM |
| DCM::EndorsingAuthority.Telecom | |
| DCM::Id | 2.16.840.1.113883.2.4.3.11.60.40.3.1.1 |
| DCM::KeywordList | Verzekeringsgegevens |
| DCM::LifecycleStatus | Final |
| DCM::ModelerList | Kerngroep Registratie aan de Bron |
| DCM::Name | nl.zorg.Betaler |
| DCM::PublicationDate | 1-5-2016 |
| DCM::PublicationStatus | Published |
| DCM::ReviewerList | Projectgroep Generieke Overdrachtsgegevens & Kerngroep Registratie aan de Bron |
| DCM::RevisionDate | 1-4-2015 |
| DCM::Superseeds | nl.nfu.Betaler-v1.2 |
| DCM::Version | 3.0 |

1.1 Revision History

Publicatieversie 1.0 (15-02-2013)

-

Publicatieversie 1.1 (01-07-2013)

Bevat: ZIB-59.

Publicatieversie 1.2 (01-04-2015)

Bevat: ZIB-72, ZIB-216, ZIB-217, ZIB-306, ZIB-308, ZIB-314, ZIB-357.

Incl. algemene wijzigingsverzoeken:

ZIB-94, ZIB-154, ZIB-200, ZIB-201, ZIB-309, ZIB-324, ZIB-326.

Publicatieversie 3.0 (01-05-2016)

Bevat: ZIB-453

1.2 Concept

Payers are organizations or individuals that pay for the healthcare supplied to the patient. These organizations or individuals can be: facilities or people who financially guarantee or who are

responsible for the patient (such as parents or guardians of minors), organizations with direct financial responsibility, combinations of these or the patient themselves.

1.3 Mindmap

1.4 Purpose

Recording the information of the paying authorities and people serves to simplify payment of the fees for the supplied care and to provide insight in advance on how these fees are to be paid, especially when it comes to non-insured healthcare.

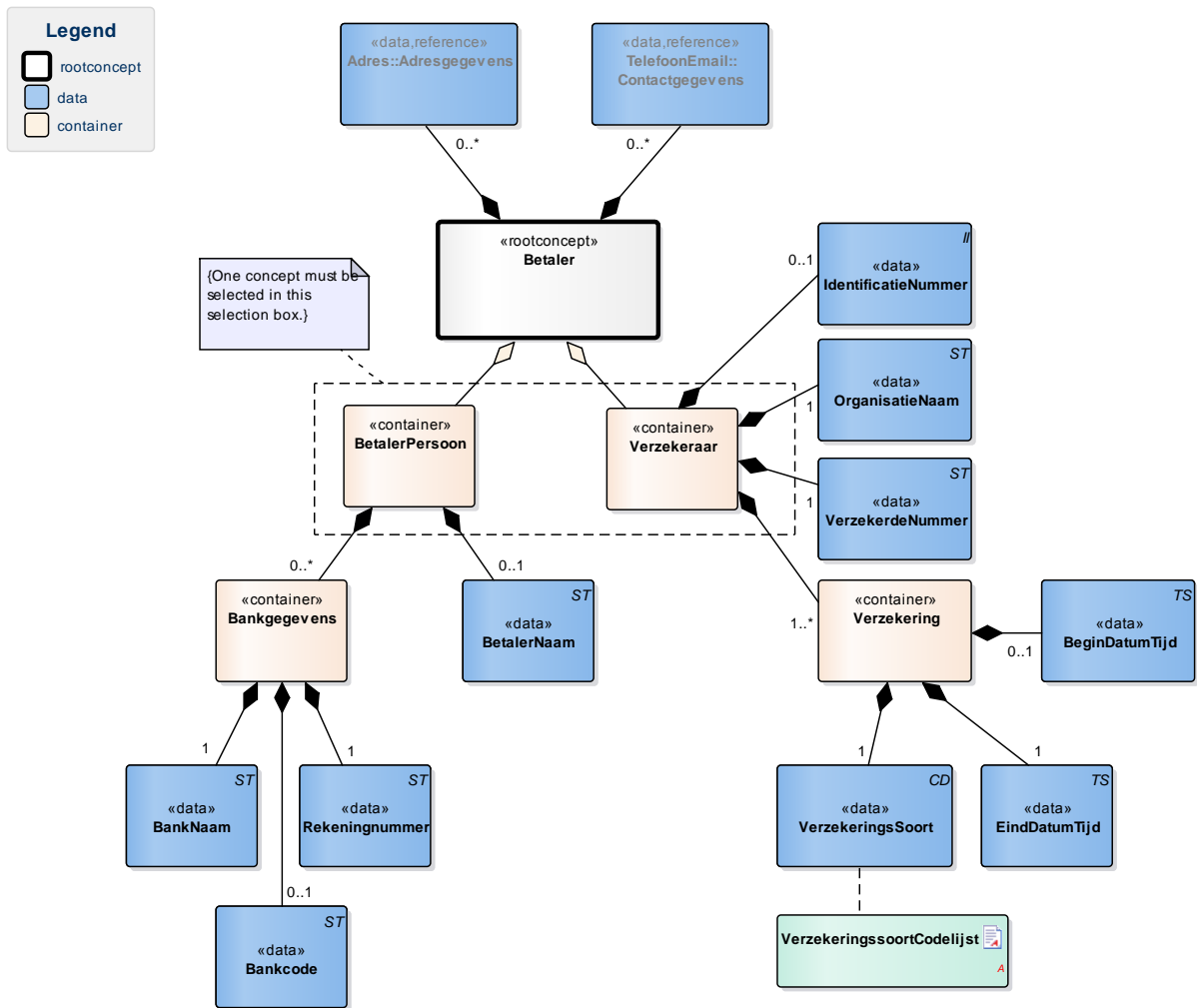
1.5 Patient Population

1.6 Evidence Base

Those that developed the model took into account the information exchanged in the 'Check for Right to Insurance (COV)'. To do so, the COV VZ801/802 message definitions were used, v4 (02-nov-2012).

The structure of the 'European Health Insurance Card (EHIC)' information was taken into account as well.

1.7 Information Model



| | |
|----------------------------|---|
| «rootconcept» | Betaler |
| Definitie | Root concept of the Payer information model. This root concept contains all data elements of the Payer information model. |
| Datatype | |
| DCM::DefinitionCode | NL-CM:1.1.1 |
| Opties | |

| | |
|----------------------------|---|
| «container» | BetalerPersoon |
| Definitie | Container of the PayerPerson concept. This container contains all data elements of the PayerPerson concept. |
| Datatype | |
| DCM::DefinitionCode | NL-CM:1.1.2 |
| Opties | |

| | |
|----------------------------|--|
| «data» | BetalerNaam |
| Definitie | Full name of the paying person or organization (legal entity). |
| Datatype | ST |
| DCM::DefinitionCode | NL-CM:1.1.5 |

| | |
|---------------|--|
| Opties | |
|---------------|--|

| | |
|----------------------------|---|
| «container» | Bankgegevens |
| Definitie | Container of the BankInformation concept. This container contains all data elements of the BankInformation concept. |
| Datatype | |
| DCM::DefinitionCode | NL-CM:1.1.4 |
| Opties | |

| | |
|----------------------------|-------------------------------------|
| «data» | BankNaam |
| Definitie | Name of the financial organization. |
| Datatype | ST |
| DCM::DefinitionCode | NL-CM:1.1.9 |
| DCM::ExampleValue | ING |
| Opties | |

| | |
|----------------------------|--|
| «data» | Bankcode |
| Definitie | Code indicating the bank and branch. For European countries, this is the organization's BIC or SWIFT code. |
| Datatype | ST |
| DCM::DefinitionCode | NL-CM:1.1.10 |
| DCM::ExampleValue | INGBNL2A |
| Opties | |

| | |
|----------------------------|---|
| «data» | Rekeningnummer |
| Definitie | The payer's bank account number at the listed organization. For European countries, this is the IBAN. |
| Datatype | ST |
| DCM::DefinitionCode | NL-CM:1.1.11 |
| DCM::ExampleValue | NL85INGB0001234567 |
| Opties | |

| | |
|----------------------------|---|
| «container» | Verzekeraar |
| Definitie | Container of the InsuranceCompany concept. This container contains all data elements of the InsuranceCompany concept. |
| Datatype | |
| DCM::DefinitionCode | NL-CM:1.1.3 |
| Opties | |

| | |
|--------------------|---|
| «container» | Verzekering |
| Definitie | Container of the Insurance concept. This container contains all data elements of the Insurance concept. |
| Datatype | |

| | | |
|----------------------------|-------------|--|
| DCM::DefinitionCode | NL-CM:1.1.8 | |
| Opties | | |

| | | |
|----------------------------|--|--|
| «data» | BeginDatumTijd | |
| Definitie | Date from which the insurance policy coverage applies. | |
| Datatype | TS | |
| DCM::DefinitionCode | NL-CM:1.1.13 | |
| DCM::ExampleValue | 01-01-2012 | |
| Opties | | |

| | | |
|----------------------------|--|--|
| «data» | EindDatumTijd | |
| Definitie | Date until which the insurance policy coverage applies. This item maps the 'Expiry date' on EHIC field 9. | |
| Datatype | TS | |
| DCM::DefinitionCode | NL-CM:1.1.14 | |
| DCM::ExampleValue | 31-01-2013 | |
| Opties | | |

| | | |
|----------------------------|---|--|
| «data» | VerzekeringsSoort | |
| Definitie | Type of insurance policy. Codes as returned in the Check for Right to Insurance | |
| Datatype | CD | |
| DCM::DefinitionCode | NL-CM:1.1.15 | |
| DCM::ExampleValue | Basis verzekerd | |
| DCM::ValueSet | VerzekeringssoortCodelijst | OID: 2.16.840.1.113883.2.4.3.11.60.40.2.1.1.1 |
| Opties | | |

| | | |
|--------------------------------|--|--------------------------------|
| «data» | IdentificatieNummer | |
| Definitie | Unique healthcare insurance company identification (the UZOVI number). | |
| Datatype | II | |
| DCM::AssigningAuthority | UZOVI | OID: 2.16.840.1.113883.2.4.6.4 |
| DCM::DefinitionCode | NL-CM:1.1.7 | |
| DCM::ExampleValue | 3312 | |
| Opties | | |

| | | |
|----------------------------|--|--|
| «data» | OrganisatieNaam | |
| Definitie | Full, official name of the healthcare insurance company. If the UZOVI number is entered as an identification number, this will be the name as listed in the UZOVI register and the name which is returned in the Check for Right to Insurance (COV). | |
| Datatype | ST | |
| DCM::DefinitionCode | NL-CM:1.1.16 | |

| | | |
|-------------------|--------------------------|--|
| DCM::ExampleValue | MijnZorgverzekering N.V. | |
| Opties | | |

| «data» | VerzekerdeNummer | |
|---------------------|---|--|
| Definitie | Number under which the insured person is registered at the insurance company This item maps the 'Identification number of the card' on EHC field 8 | |
| Datatype | ST | |
| DCM::DefinitionCode | NL-CM:1.1.6 | |
| DCM::ExampleValue | 992298765 | |
| Opties | | |

| «data» | Adres::Adresgegevens | |
|-------------------------------|----------------------------------|---|
| Definitie | The payer's address information. | |
| Datatype | | |
| DCM::DefinitionCode | NL-CM:1.1.17 | |
| DCM::ReferencedDefinitionCode | NL-CM:0.1.4 | This is a reference to concept Adresgegevens in information model Patient |
| Opties | | |

| «data» | TelefoonEmail::Contactgegevens | |
|-------------------------------|---|---|
| Definitie | The payer's telephone number and/or e-mail address. | |
| Datatype | | |
| DCM::DefinitionCode | NL-CM:1.1.12 | |
| DCM::ReferencedDefinitionCode | NL-CM:0.1.5 | This is a reference to concept Contactgegevens in information model Patient |
| Opties | | |

| «document» | VerzekeringsoortCodelijst | |
|------------|---------------------------|--|
| Definitie | | |
| Datatype | | |
| Opties | | |

VerzekeringsoortCodelijst **OID: 2.16.840.1.113883.2.4.3.11.60.40.2.1.1.1**

| Concept Name | Concept Code | Codesystem | Codesystem OID | Description |
|------------------------------|--------------|------------------|---------------------------------------|---|
| Basis | B | Verzekeringsoort | 2.16.840.1.113883.2.4.3.11.60.101.5.1 | Basis verzekerd |
| Aanvullend verzekerd | A | Verzekeringsoort | 2.16.840.1.113883.2.4.3.11.60.101.5.1 | Aanvullend verzekerd |
| Basisverzekering vanuit AWBZ | BZ | Verzekeringsoort | 2.16.840.1.113883.2.4.3.11.60.101.5.1 | Basisverzekering vanuit AWBZ |
| Hoofdverzekering | H | Verzekeringsoort | 2.16.840.1.113883.2.4.3.11.60.101.5.1 | Een basisverzekering die geen onderdeel |

| | | | | |
|-----------------------|----|------------------|---------------------------------------|---|
| | | | | uitmaakt van de ZVW of AWBZ (bijvoorbeeld voor expats in het buitenland). |
| Tandverzekering (los) | T | Verzekeringsoort | 2.16.840.1.113883.2.4.3.11.60.101.5.1 | Tandverzekering |
| Aanvullend + tand | AT | Verzekeringsoort | 2.16.840.1.113883.2.4.3.11.60.101.5.1 | Aanvullend + tand |

1.8 Example Instances

| Verzekeraar | |
|---------------------|-----------------------------|
| IdentificatieNummer | 3332 |
| OrganisatieNaam | Menzis Zorgverzekeraar N.V. |
| VerzekerdeNummer | 12345678 |
| Verzekering | |
| BeginDatumTijd | 01-01-2012 |
| EindDatumTijd | 31-01-2013 |
| Verzekeringsoort | Basis verzekerd |
| Adres | |
| Straat | Postbus |
| Huisnummer | 34000 |
| Postcode | 7500 KC |
| Woonplaats | Enschede |
| Land | Nederland |
| TelefoonEmail | |
| Telefoonnummer | +31505233333 |
| NummerSoort | Zakelijk telefoonnummer |

| BetalerPersoon | |
|----------------|------------------------|
| BetalerNaam | J.P.M. van Putten |
| Bankgegevens | |
| BankNaam | ING |
| Bankcode | INGBNL2A |
| Rekeningnummer | NL85INGB0001234567 |
| Adres | |
| Straat | 1e Jacob van Campenstr |
| Huisnummer | 15 |
| Postcode | 1012 NX |
| Woonplaats | Hoogmade |
| Gemeente | Kaag en Braassem |
| Land | Nederland |
| AdresSoort | Woon-/verblijfadres |
| TelefoonEmail | |
| Telefoonnummer | +311725233111 |
| NummerSoort | Privé telefoonnummer |

1.9 Instructions

1.10 Interpretation

1.11 Care Process

1.12 Example of the Instrument

1.13 Constraints

1.14 Issues

1.15 References

1.16 Functional Model

1.17 Traceability to other Standards

1.18 Disclaimer

This Health and Care Information Model (a.k.a Clinical Building Block) has been made in collaboration with several different parties in healthcare. These parties asked Nictiz to manage good maintenance and development of the information models. Hereafter, these parties and Nictiz are referred to as the collaborating parties. The collaborating parties paid utmost attention to the reliability and topicality of the data in these Health and Care Information Models. Omissions and inaccuracies may however occur. The collaborating parties are not liable for any damages resulting from omissions or inaccuracies in the information provided, nor are they liable for damages resulting from problems caused by or inherent to distributing information on the internet, such as malfunctions, interruptions, errors or delays in information or services provide by the parties to you or by you to the parties via a website or via e-mail, or any other digital means. The collaborating parties will also not accept liability for any damages resulting from the use of data, advice or ideas provided by or on behalf of the parties by means of this Health and Care Information Model. The parties will not accept any liability for the content of information in this Health and Care Information Model to which or from which a hyperlink is referred. In the event of contradictions in mentioned Health and Care Information Model documents and files, the most recent and highest version of the listed order in the revisions will indicate the priority of the documents in question. If information

included in the digital version of this Health and Care Information Model is also distributed in writing, the written version will be leading in case of textual differences. This will apply if both have the same version number and date. A definitive version has priority over a draft version. A revised version has priority over previous versions.

1.19 Terms of Use

The user may use the information in this Health and Care Information Model without limitations. The copyright provisions in the paragraph concerned apply to copying, distributing and passing on information from this Health and Care Information Model.

1.20 Copyrights

The user may copy, distribute and pass on the information in this Health and Care Information Model under the conditions that apply for Creative Commons license Attribution-NonCommercial-ShareAlike 3.0 Netherlands (CC BY-NC-SA-3.0). The content is available under Creative Commons Attribution-NonCommercial-ShareAlike 3.0 (see also <http://creativecommons.org/licenses/by-nc-sa/3.0/nl/>)