

Health & Care Information Model:

nl.zorg.Exclusion-v1.1

Status: Final

Release: 2026-1

Release status: Prepublished

Managed by:



Content

| | |
|--------------------------------------|----------|
| 1. nl.zorg.Exclusion-v1.1 | 3 |
| 1.1 Revision History | 3 |
| 1.2 Concept | 3 |
| 1.3 Mindmap | 3 |
| 1.4 Purpose | 3 |
| 1.5 Patient Population | 3 |
| 1.6 Evidence Base | 3 |
| 1.7 Information Model | 4 |
| 1.8 Example Instances | 5 |
| 1.9 Instructions | 6 |
| 1.10 Interpretation | 6 |
| 1.11 Care Process | 6 |
| 1.12 Example of the Instrument | 6 |
| 1.13 Constraints | 6 |
| 1.14 Issues | 6 |
| 1.15 References | 6 |
| 1.16 Functional Model | 6 |
| 1.17 Traceability to other Standards | 6 |
| 1.18 Disclaimer | 7 |
| 1.19 Terms of Use | 7 |
| 1.20 Copyrights | 7 |

1. nl.zorg.Exclusion-v1.1

| | |
|---------------------------------|--|
| DCM::CoderList | Zib-centrum |
| DCM::ContactInformation.Address | * |
| DCM::ContactInformation.Name | * |
| DCM::ContactInformation.Telecom | * |
| DCM::ContentAuthorList | Zib-centrum |
| DCM::CreationDate | 31-01-2024 |
| DCM::DeprecatedDate | |
| DCM::DescriptionLanguage | nl |
| DCM::EndorsingAuthority.Address | |
| DCM::EndorsingAuthority.Name | * |
| DCM::EndorsingAuthority.Telecom | |
| DCM::Id | 2.16.840.1.113883.2.4.3.11.60.40.3.5.7 |
| DCM::KeywordList | |
| DCM::LifecycleStatus | Final |
| DCM::ModelerList | * |
| DCM::Name | nl.zorg.Uitsluiting |
| DCM::PublicationDate | 17-04-2026 |
| DCM::PublicationStatus | Prepublished |
| DCM::ReviewerList | Zib-centrum |
| DCM::RevisionDate | 17-04-2025 |
| DCM::Supersedes | nl.zorg.Uitsluiting-v1.0 |
| DCM::Version | 1.1 |
| HCIM::PublicationLanguage | EN |

1.1 Revision History

Publicatieversie 1.0 (15-04-2024)

Bevat:

Publicatieversie 1.1 (24-04-2024)

Bevat: ZIB-2747.

1.2 Concept

An explicit statement about exclusion of a specific condition or state.

1.3 Mindmap

1.4 Purpose

Explicitly assessing the absence of a condition or state.

1.5 Patient Population

1.6 Evidence Base

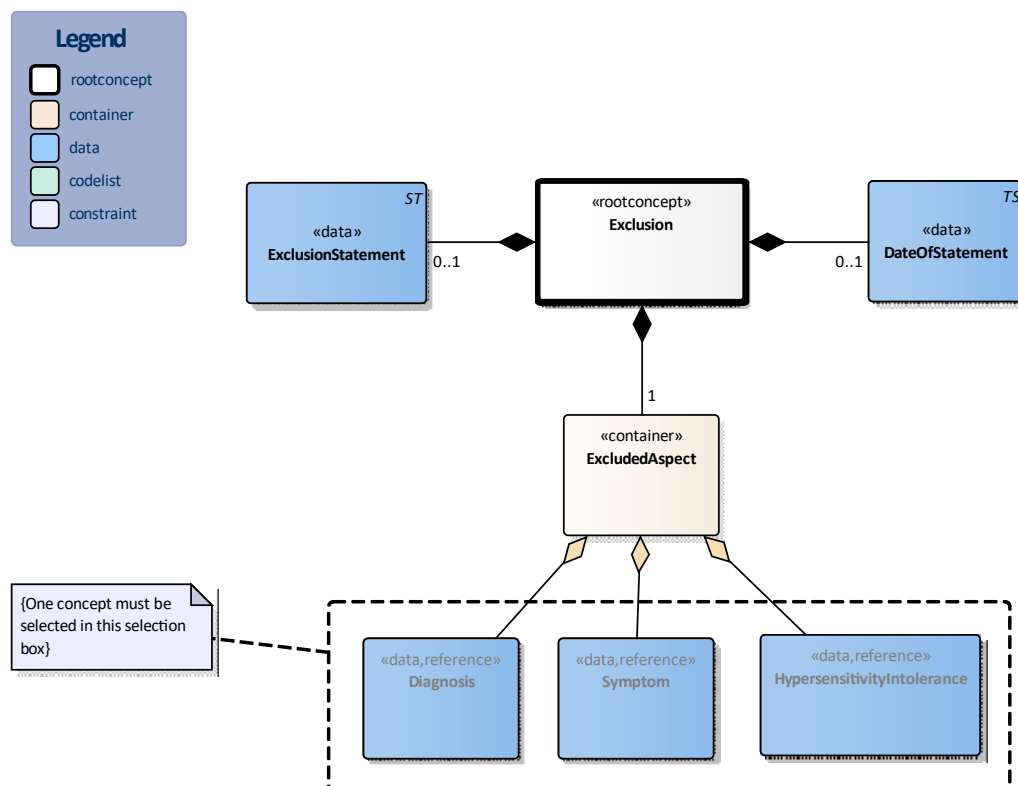
The absence of a clinical concept is not a property of that concept, but a statement about the concept. That is why HCIM's such as DiagnosticInsight do not contain presence status. To explicitly indicate that a health aspect is not present, the HCIM Exclusion is used, which refers to a HCIM that models the excluded aspect. Of these HCIM's, only those elements that name the aspect are used, such as the name. By referring to the

relevant HCIM's, semantic unification is achieved with regard to naming.

This HCIM shall not be used in the next situations:

- In the context of the tract anamneses or a questionnaire, often a large number of health aspects are reviewed, whereby it is determined whether or not the patient is familiar with them, resulting in a 'yes/no' choice. This HCIM is not intended for these situations. This can be supported with a HCIM based on the HCIM template Patient Questionnaire.
- Findings such as 'No known allergies' et cetera cannot be captured with the Exclusion HCIM, as this would require that the concept of 'Known allergies' be modeled with (in this case) the Hypersensitivity HCIM. Such a statement, which refers to a list or section, must be implemented in an information standard at the according level.
- If a condition or symptom is no longer present (but was present before) this is indicated by the course element.

1.7 Information Model



| «rootconcept» | Exclusion | |
|---------------------|--|--|
| Definitie | This is a reference to the rootconcept of information model Exclusion. | |
| Datatype | | |
| DCM::ConceptId | NL-CM:5.7.1 | |
| DCM::DefinitionCode | SNOMED CT: 413350009 | |
| | Finding with explicit context | |
| Opties | | |

| «data» | DateOfStatement | |
|----------------|---|--|
| Definitie | Date on which it was assessed that the concept was not present. | |
| Datatype | TS | |
| DCM::ConceptId | NL-CM:5.7.2 | |
| Opties | | |

| «data» | ExclusionStatement | |
|----------------|--|--|
| Definitie | Statement of exclusion. Default the text is 'No known..' or 'No known history of ..' | |
| Datatype | ST | |
| DCM::ConceptId | NL-CM:5.7.3 | |
| Opties | | |

| «container» | ExcludedAspect | |
|----------------|--|--|
| Definitie | Container of the ExcludedAspect concept.This container contains all data elements of the ExcludedAspect concept. | |
| Datatype | | |
| DCM::ConceptId | NL-CM:5.7.4 | |
| Opties | | |

| «data» | Diagnosis | |
|--------------------------|-----------------------------|--|
| Definitie | Diagnosis that is excluded. | |
| Datatype | | |
| DCM::ConceptId | NL-CM:5.7.5 | |
| DCM::ReferencedConceptId | NL-CM:5.6.1 | This is a reference to the rootconcept of information model Diagnosis. |
| Opties | | |

| «data» | Symptom | |
|--------------------------|---------------------------|--|
| Definitie | Symptom that is excluded. | |
| Datatype | | |
| DCM::ConceptId | NL-CM:5.7.6 | |
| DCM::ReferencedConceptId | NL-CM:5.5.1 | This is a reference to the rootconcept of information model Symptom. |
| Opties | | |

| «data» | HypersensitivityIntolerance | |
|--------------------------|---|--|
| Definitie | Hypersensitivity or intolerance that is excluded. | |
| Datatype | | |
| DCM::ConceptId | NL-CM:5.7.7 | |
| DCM::ReferencedConceptId | NL-CM:8.6.1 | This is a reference to the rootconcept of information model HypersensitivityIntolerance. |
| Opties | | |

| | Legend | |
|-----------|--------|--|
| Definitie | | |
| Datatype | | |
| Opties | | |

| | Constraint | |
|-----------|--|--|
| Definitie | One concept must be selected in this selection box | |
| Datatype | | |
| Opties | | |

1.8 Example Instances

| Uitsluiting | | | |
|------------------------|-------------------|--|--------------------------------|
| Uitsluitingsverklaring | DatumVaststelling | UitgeslotenAspect::DiagnostischInzicht | |
| | | DiagnoseNaam | NadereSpecificatieDiagnoseNaam |
| Geen bekendheid met | 04-12-2019 | Diabetes mellitus type 2 | -- |

1.9 Instructions

When referring to the underlying HCIMs, only a limited number of fields of these HCIM's are filled. These are respectively

- DiagnosticInsight (constraint: not a differential diagnosis):
 - ◆ DiagnosisName
 - ◆ if relevant, FurtherSpecificationDiagnosisNam
- Symptom
 - ◆ SymptomName
 - ◆ if relevant, FurtherSpecificationSymptomName
- HypersensitivityIntolerance
 - ◆ DiagnosisName
 - ◆ if relevant, FurtherSpecificationDiagnosisName
 - ◆ Substance or Radiation

In none of the above three cases is a reference made to the HCIM Condition, as the current HCIM models the absence of the condition.

1.10 Interpretation

1.11 Care Process

1.12 Example of the Instrument

1.13 Constraints

1.14 Issues

1.15 References

1.16 Functional Model

1.17 Traceability to other Standards

1.18 Disclaimer

The Health and Care Information Models (a.k.a Clinical Building Block) has been made in collaboration with several different parties in healthcare. These parties asked Nictiz to manage good maintenance and development of the information models. Hereafter, these parties and Nictiz are referred to as the collaborating parties. The collaborating parties paid utmost attention to the reliability and topicality of the data in these Health and Care Information Models. Omissions and inaccuracies may however occur. The collaborating parties are not liable for any damages resulting from omissions or inaccuracies in the information provided, nor are they liable for damages resulting from problems caused by or inherent to distributing information on the internet, such as malfunctions, interruptions, errors or delays in information or services provide by the parties to you or by you to the parties via a website or via e-mail, or any other digital means. The collaborating parties will also not accept liability for any damages resulting from the use of data, advice or ideas provided by or on behalf of the parties by means of the Health and Care Information Models. The parties will not accept any liability for the content of information in this Health and Care Information Model to which or from which a hyperlink is referred. In the event of contradictions in mentioned Health and Care Information Model documents and files, the most recent and highest version of the listed order in the revisions will indicate the priority of the documents in question. If information included in the digital version of a Health and Care Information Model is also distributed in writing, the written version will be leading in case of textual differences. This will apply if both have the same version number and date. A definitive version has priority over a draft version. A revised version has priority over previous versions.

1.19 Terms of Use

The user may use the Health and Care Information Models without limitations. The copyright provisions in the paragraph concerned apply to copying, distributing and passing on the Health and Care Information Models.

1.20 Copyrights

A Health and Care Information Model qualifies as a work within the meaning of Section 10 of the Copyright Act (Auteurswet). Copyrights protect the Health and Care Information Models and these rights are owned by the cooperating parties.

The user may copy, distribute and pass on the information in this Health and Care Information Model under the conditions that apply for Creative Commons license Attribution-NonCommercial-ShareAlike 3.0 Netherlands (CC BY-NC-SA-3.0).

The content is available under Creative Commons Attribution-NonCommercial-ShareAlike 3.0 (see also <http://creativecommons.org/licenses/by-nc-sa/3.0/nl/>)

This does not apply to information from third parties that sometimes is used and / or referred to in a Health and Care Information Model, for example to an international medical terminology system. Any (copyright) rights that protect this information are not owned by the cooperating parties but by those third parties.

Nictiz is the independent national competence centre for electronic exchange of health and care information. The activities of Nictiz include the targeted development and management of information standards at the request of and in partnership with the stakeholders in healthcare. Nictiz advises these parties on all aspects of information exchange and identifies (future) national and international developments.

Nictiz

P.O. Box 19121
2500 CC Den Haag
Oude Middenweg 55
2491 AC Den Haag

070-3173450
info@nictiz.nl
www.nictiz.nl



