

# Health & Care Information Model:

nl.zorg.Encounter-v7.0

Status: Final

Release: 2026-1

Release status: Prepublished

Managed by:



# Content

<b>1. nl.zorg.Encounter-v7.0</b>	<b>3</b>
1.1 Revision History	3
1.2 Concept	4
1.3 Mindmap	4
1.4 Purpose	4
1.5 Patient Population	4
1.6 Evidence Base	4
1.7 Information Model	4
1.8 Example Instances	10
1.9 Instructions	10
1.10 Interpretation	11
1.11 Care Process	11
1.12 Example of the Instrument	11
1.13 Constraints	11
1.14 Issues	11
1.15 References	11
1.16 Functional Model	11
1.17 Traceability to other Standards	11
1.18 Disclaimer	11
1.19 Terms of Use	11
1.20 Copyrights	12

# 1. nl.zorg.Encounter-v7.0

DCM::CoderList	Kerngroep Registratie aan de Bron
DCM::ContactInformation.Address	*
DCM::ContactInformation.Name	*
DCM::ContactInformation.Telecom	*
DCM::ContentAuthorList	Projectgroep Generieke Overdrachtsgegevens & Kerngroep Registratie aan de Bron
DCM::CreationDate	19-4-2012
DCM::DeprecatedDate	
DCM::DescriptionLanguage	nl
DCM::EndorsingAuthority.Address	
DCM::EndorsingAuthority.Name	PM
DCM::EndorsingAuthority.Telecom	
DCM::Id	2.16.840.1.113883.2.4.3.11.60.40.3.15.1
DCM::KeywordList	Contacten, contact, patiëntcontact, afspraak
DCM::LifecycleStatus	Final
DCM::ModelerList	Kerngroep Registratie aan de Bron
DCM::Name	nl.zorg.Contact
DCM::PublicationDate	17-04-2026
DCM::PublicationStatus	Prepublished
DCM::ReviewerList	Projectgroep Generieke Overdrachtsgegevens & Kerngroep Registratie aan de Bron
DCM::RevisionDate	08-04-2025
DCM::Supersedes	nl.zorg.Contact-v6.0
DCM::Version	7.0
HCIM::PublicationLanguage	EN

## 1.1 Revision History

Publicatieversie 1.0 (15-02-2013)

Publicatieversie 1.1 (01-07-2013)

Publicatieversie 1.2 (01-04-2015)

Bevat: ZIB-163, ZIB-164, ZIB-165, ZIB-306, ZIB-308.

Incl. algemene wijzigingsverzoeken:

ZIB-94, ZIB-154, ZIB-200, ZIB-201, ZIB-309, ZIB-324, ZIB-326.

Publicatieversie 3.0 (01-05-2016)

Bevat: ZIB-453.

Publicatieversie 3.1 (04-09-2017)

Bevat: ZIB-463, ZIB-465, ZIB-553, ZIB-563, ZIB-564, ZIB-565, ZIB-574.

Publicatieversie 4.0 (06-07-2019)

Bevat: ZIB-701, ZIB-819, ZIB-821, ZIB-822.

Publicatieversie 4.0.1 (01-09-2020)

Bevat: ZIB-1089, ZIB-1189.

Publicatieversie 4.0.2 (01-12-2021)

Bevat: ZIB-1334, ZIB-1428.

Publicatieversie 5.0 (10-06-2022)  
Bevat: ZIB-622, ZIB-938, ZIB-1104, ZIB-1306, ZIB-1632.

Publicatieversie 6.0 (15-10-2023)  
Bevat: ZIB-1772, ZIB-1824, ZIB-1890, ZIB-1906.

Publicatieversie 7.0 (24-04-2024)  
Bevat: ZIB-2604.

## **1.2 Concept**

<SPAN style="color: #121f3c">A contact is an interaction between a patient and health care provider(s) in the context of a problem, such as a diagnosis, symptom or nursing diagnosis. These can be visits or online interactions.

Encounters can be visits to the general practitioner or other practices, home visits or other relevant encounters. This includes past and future encounters.

In the case of encounters where the main purpose is to perform a procedure, the encounter is considered an implicit part of this procedure and not additionally described as encounter.

## **1.3 Mindmap**

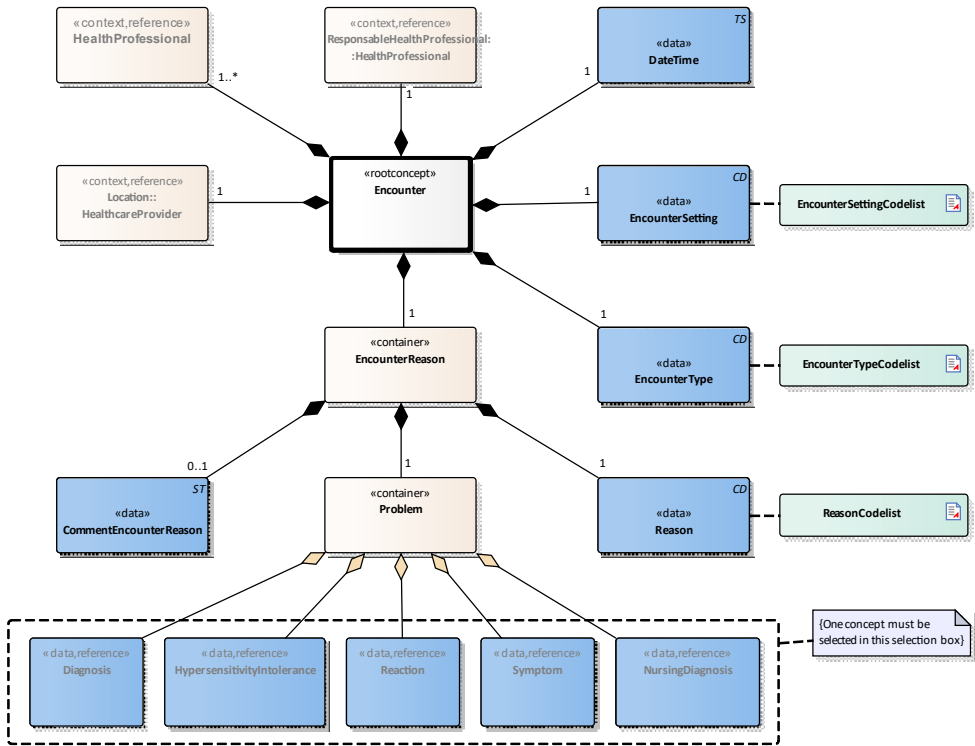
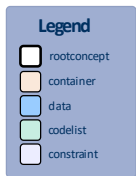
## **1.4 Purpose**

Encounters take place between a health professional and patient with the aim of assessing the patient's health condition or discuss a care request, treatment outcome or follow-up policy with the patient.

## **1.5 Patient Population**

## **1.6 Evidence Base**

## **1.7 Information Model**



«rootconcept»	Encounter	
Definitie	Root concept of the Encounter information model. This concept contains all data elements of the Encounter information model.	
Datatype		
DCM::ConceptId	NL-CM:15.1.1	
DCM::DefinitionCode	SNOMED CT: 308335008	Patient encounter procedure
Opties		

«data»	DateTime	
Definitie	The date and time at which the encounter took or will take place.	
Datatype	TS	
DCM::ConceptId	NL-CM:15.1.3	
Opties		

«data»	EncounterSetting	
Definitie	EncounterSetting describes the manner and setting in which the contact takes place	
Datatype	CD	
DCM::ConceptId	NL-CM:15.1.19	
DCM::ValueSet	EncounterSettingCodelist	OID: 2.16.840.1.113883.2.4.3.11.60.40.2.15.1.2
Opties		

«data»	EncounterType	
Definitie	The type of encounter is based on the setting of the encounter and the participants present.	
Datatype	CD	

DCM::ConceptId	NL-CM:15.1.2	
DCM::ValueSet	EncounterTypeCodelist	OID: 2.16.840.1.113883.2.4.3.11.60.40.2.15.1.1
Opties		

«container»	EncounterReason	
Definitie	Container of the EncounterReason concept.This container contains all data elements of the EncounterReason concept.	
Datatype		
DCM::ConceptId	NL-CM:15.1.13	
Opties		

«data»	Reason	
Definitie	Main reason for the encounter within the context of the health problem.	
Datatype	CD	
DCM::ConceptId	NL-CM:15.1.20	
DCM::ValueSet	ReasonCodelist	OID: 2.16.840.1.113883.2.4.3.11.60.40.2.15.1.3
Opties		

«container»	Problem	
Definitie	Container of the Problem concept.This container contains all data elements of the Problem concept.	
Datatype		
DCM::ConceptId	NL-CM:15.1.21	
Opties		

«data»	Diagnosis	
Definitie	The diagnosis as the reason for the encounter.	
Datatype		
DCM::ConceptId	NL-CM:15.1.22	
DCM::ReferencedConceptId	NL-CM:5.6.1	This is a reference to the rootconcept of information model Diagnosis.
Opties		

«data»	HypersensitivityIntolerance	
Definitie	The hypersensitivity or intolerance as the reason for the encounter.	
Datatype		
DCM::ConceptId	NL-CM:15.1.23	
DCM::ReferencedConceptId	NL-CM:8.6.1	This is a reference to the rootconcept of information model HypersensitivityIntolerance.
Opties		

«data»	Reaction	
Definitie	The adverse reaction to a substance or radiation as the reason for the encounter.	
Datatype		
DCM::ConceptId	NL-CM:15.1.24	
DCM::ReferencedConceptId	NL-CM:5.3.1	This is a reference to the rootconcept of information model Reaction.
Opties		

«data»	Symptom	
--------	---------	--

<b>Definitie</b>	The symptom as the reason for the encounter.	
<b>Datatype</b>		
<b>DCM::ConceptId</b>	NL-CM:15.1.25	
<b>DCM::ReferencedConceptId</b>	NL-CM:5.5.1	This is a reference to the rootconcept of information model Symptom.
<b>Opties</b>		

<b>«data»</b>	<b>NursingDiagnosis</b>	
<b>Definitie</b>	The nursing diagnosis as the reason for the encounter.	
<b>Datatype</b>		
<b>DCM::ConceptId</b>	NL-CM:15.1.26	
<b>DCM::ReferencedConceptId</b>	NL-CM:5.8.1	This is a reference to the rootconcept of information model NursingDiagnosis.
<b>Opties</b>		

<b>«context»</b>	<b>ResponsibleHealthProfessional::HealthProfessional</b>	
<b>Definitie</b>	The health professional who is responsible at the time of the encounter for the treatment of the patient's stated health problem.	
<b>Datatype</b>		
<b>DCM::ConceptId</b>	NL-CM:15.1.18	
<b>DCM::ReferencedConceptId</b>	NL-CM:17.1.1	This is a reference to the rootconcept of information model HealthProfessional.
<b>Opties</b>		

<b>«context»</b>	<b>HealthProfessional</b>	
<b>Definitie</b>	The health professional with whom the encounter took or will take place. The specialty and role of the health professional can be entered in the HealthProfessional information model.	
<b>Datatype</b>		
<b>DCM::ConceptId</b>	NL-CM:15.1.7	
<b>DCM::ReferencedConceptId</b>	NL-CM:17.1.1	This is a reference to the rootconcept of information model HealthProfessional.
<b>Opties</b>		

<b>«data»</b>	<b>CommentEncounterReason</b>	
<b>Definitie</b>	Comment on the reason for the encounter, insofar as this cannot be sufficiently expressed in the other elements.	
<b>Datatype</b>	ST	
<b>DCM::ConceptId</b>	NL-CM:15.1.17	
<b>DCM::DefinitionCode</b>	LOINC: 48767-8 Annotation comment [Interpretation] Narrative	
<b>DCM::Example</b>	Bespreken mogelijkheden sedatie en pijnbestrijding	
<b>Opties</b>		

<b>«context»</b>	<b>Location::HealthcareProvider</b>	
<b>Definitie</b>	The physical location at which the encounter took or will take place.	
<b>Datatype</b>		
<b>DCM::ConceptId</b>	NL-CM:15.1.8	
<b>DCM::ReferencedConceptId</b>	NL-CM:17.2.1	This is a reference to the rootconcept of information model Healthcare Provider
<b>Opties</b>		

«document»	ReasonCodeList	
Definitie		
Datatype		
DCM::ValueSetBinding	Extensible	
DCM::ValueSetId	2.16.840.1.113883.2.4.3.11.60.40.2.15.1.3	
DCM::ValueSetIncludeOTH	True	
DCM::ValueSetStatus	Active	
HCIM::ValueSetLanguage	--	
Opties		

AanleidingContactCodelijst			OID: 2.16.840.1.113883.2.4.3.11.60.40.2.15.1.3	
Concept Name	Concept Code	Coding Syst. Name	Coding System OID	Description
Encounter for check up	185349003	SNOMED CT	2.16.840.1.113883.6.96	Controle
New patient consultation	185387006	SNOMED CT	2.16.840.1.113883.6.96	Intake
Screening procedure	20135006	SNOMED CT	2.16.840.1.113883.6.96	Screening
Counseling	409063005	SNOMED CT	2.16.840.1.113883.6.96	Adviesgesprek
Confirmatory medical consultation	77406008	SNOMED CT	2.16.840.1.113883.6.96	Second opinion
Discussion about options	223487003	SNOMED CT	2.16.840.1.113883.6.96	Bespreken beleid
Encounter for sign	185346005	SNOMED CT	2.16.840.1.113883.6.96	Verandering klachten
Follow-up consultation	281036007	SNOMED CT	2.16.840.1.113883.6.96	Follow-up
Education	409073007	SNOMED CT	2.16.840.1.113883.6.96	Voorlichting/Instructie
Clinical trial	110465008	SNOMED CT	2.16.840.1.113883.6.96	Wetenschappelijk onderzoek
Physician contact assessment	410140003	SNOMED CT	2.16.840.1.113883.6.96	Nagesprek
Encounter for acute problem	180201000146103	SNOMED CT	2.16.840.1.113883.6.96	Acuut probleem
Care provision regime	225351009	SNOMED CT	2.16.840.1.113883.6.96	Verzorging/verpleging
Keeping a vigil of dying patient	180311000146105	SNOMED CT	2.16.840.1.113883.6.96	Waken
Evaluation of diagnostic study results	370851004	SNOMED CT	2.16.840.1.113883.6.96	Bespreken uitslagen/metingen

«document»	EncounterSettingCodelist	
Definitie		
Datatype		
DCM::ValueSetBinding	Extensible	
DCM::ValueSetId	2.16.840.1.113883.2.4.3.11.60.40.2.15.1.2	
DCM::ValueSetIncludeOTH	True	
DCM::ValueSetStatus	Active	
HCIM::ValueSetLanguage	--	



<b>Opties</b>				
<b>ContactVormCodelijst</b>			<b>OID: 2.16.840.1.113883.2.4.3.11.60.40.2.15.1.2</b>	
Concept Name	Concept Code	Coding Syst. Name	Coding System OID	Description
Physical face-to-face encounter	180231000146108	SNOMED CT	2.16.840.1.113883.6.96	Fysiek
Indirect encounter	185316007	SNOMED CT	2.16.840.1.113883.6.96	Op afstand
Telephone encounter	185317003	SNOMED CT	2.16.840.1.113883.6.96	Telefonisch
Consultation via video conference	719410009	SNOMED CT	2.16.840.1.113883.6.96	Video
Telemedicine consultation with patient	448337001	SNOMED CT	2.16.840.1.113883.6.96	Digitaal tekstueel

<b>«document»</b>	<b>EncounterTypeCodelist</b>	
<b>Definitie</b>		
<b>Datatype</b>		
<b>DCM::ValueSetBinding</b>	Extensible	
<b>DCM::ValueSetId</b>	2.16.840.1.113883.2.4.3.11.60.40.2.15.1.1	
<b>DCM::ValueSetInclude OTH</b>	True	
<b>DCM::ValueSetStatus</b>	Active	
<b>HCIM::ValueSetLanguage</b>	EN	
<b>Opties</b>		

<b>ContactTypeCodelijst</b>			<b>OID: 2.16.840.1.113883.2.4.3.11.60.40.2.15.1.1</b>	
Concept Name	Concept Code	Coding Syst. Name	Coding System OID	Description
Ambulatory	AMB	ActCode	2.16.840.1.113883.5.4	Poliklinisch, Ambulant [DEPRECATED]
Emergency	EMER	ActCode	2.16.840.1.113883.5.4	SEH [DEPRECATED]
Field	FLD	ActCode	2.16.840.1.113883.5.4	Op locatie [DEPRECATED]
Home	HH	ActCode	2.16.840.1.113883.5.4	Thuis [DEPRECATED]
Inpatient	IMP	ActCode	2.16.840.1.113883.5.4	Klinisch [DEPRECATED]
Short Stay	SS	ActCode	2.16.840.1.113883.5.4	Dagopname [DEPRECATED]
Virtual	VR	ActCode	2.16.840.1.113883.5.4	Virtueel [DEPRECATED]
Triage	225390008	SNOMED CT	2.16.840.1.113883.6.96	Triage
First consultation with outpatient	105251000146109	SNOMED CT	2.16.840.1.113883.6.96	1e poliklinisch consult
Follow-up consultation with outpatient	93881000146109	SNOMED CT	2.16.840.1.113883.6.96	Poliklinisch vervolgconsult
Outpatient inter-collegial consultation	180191000146100	SNOMED CT	2.16.840.1.113883.6.96	Poliklinisch intercollegiaal consult
Multidisciplinary consultation	155161000146105	SNOMED CT	2.16.840.1.113883.6.96	Poliklinisch multidisciplinair consult
Evaluation and management of inpatient	86181006	SNOMED CT	2.16.840.1.113883.6.96	Klinische contact
Medical	24882007	SNOMED CT	2.16.840.1.113883.6.96	Klinisch intercollegiaal

consultation on hospital inpatient				consult
Primary care encounter with consulted physician	180211000146101	SNOMED CT	2.16.840.1.113883.6.96	Meekijkconsult
Pre-anesthetic assessment	182770003	SNOMED CT	2.16.840.1.113883.6.96	Preoperatieve screening
Home visit	439708006	SNOMED CT	2.16.840.1.113883.6.96	Huisbezoek
Emergency department patient visit	4525004	SNOMED CT	2.16.840.1.113883.6.96	SEH bezoek
Transportation by emergency ambulance	715542009	SNOMED CT	2.16.840.1.113883.6.96	Ambulance contact [DEPRECATED]
Transport door ambulance	715537001	SNOMED CT	2.16.840.1.113883.6.96	Ambulance contact
Transportation by helicopter air ambulance	715540001	SNOMED CT	2.16.840.1.113883.6.96	Traumaheli contact
Office visit	180221000146106	SNOMED CT	2.16.840.1.113883.6.96	Praktijkbezoek

	Legend
Definitie	
Datatype	
Opties	

	Constraint
Definitie	One concept must be selected in this selection box
Datatype	
Opties	

## 1.8 Example Instances

Contact	
DatumTijd	16-05-2022
ContactVorm	Fysiek
RedenContact	
AanleidingContact	Acuut probleem
Probleem	
Diagnose	Gebroken neus
VerantwoordelijkBehandelaar	
ZorgverlenerNaam	J.H.R. Peters
Locatie	
OrganisatieNaam	Universitair Medisch Centrum Groningen (UMCG)

## 1.9 Instructions

If a patient has contact with different specialities for different problems then a separate HCIM instantiation of Contact should be created for each problem. For example, someone seen in the ER by an ophthalmologist for eye injury, a surgeon for knee injury and an internist for loss of consciousness.

## **1.10 Interpretation**

## **1.11 Care Process**

## **1.12 Example of the Instrument**

## **1.13 Constraints**

## **1.14 Issues**

## **1.15 References**

## **1.16 Functional Model**

## **1.17 Traceability to other Standards**

## **1.18 Disclaimer**

The Health and Care Information Models (a.k.a Clinical Building Block) has been made in collaboration with several different parties in healthcare. These parties asked Nictiz to manage good maintenance and development of the information models. Hereafter, these parties and Nictiz are referred to as the collaborating parties. The collaborating parties paid utmost attention to the reliability and topicality of the data in these Health and Care Information Models. Omissions and inaccuracies may however occur. The collaborating parties are not liable for any damages resulting from omissions or inaccuracies in the information provided, nor are they liable for damages resulting from problems caused by or inherent to distributing information on the internet, such as malfunctions, interruptions, errors or delays in information or services provided by the parties to you or by you to the parties via a website or via e-mail, or any other digital means. The collaborating parties will also not accept liability for any damages resulting from the use of data, advice or ideas provided by or on behalf of the parties by means of the Health and Care Information Models. The parties will not accept any liability for the content of information in this Health and Care Information Model to which or from which a hyperlink is referred. In the event of contradictions in mentioned Health and Care Information Model documents and files, the most recent and highest version of the listed order in the revisions will indicate the priority of the documents in question. If information included in the digital version of a Health and Care Information Model is also distributed in writing, the written version will be leading in case of textual differences. This will apply if both have the same version number and date. A definitive version has priority over a draft version. A revised version has priority over previous versions.

## **1.19 Terms of Use**

The user may use the Health and Care Information Models without limitations. The copyright provisions in the paragraph concerned apply to copying, distributing and passing on the Health and Care Information Models.

## 1.20 Copyrights

A Health and Care Information Model qualifies as a work within the meaning of Section 10 of the Copyright Act (Auteurswet). Copyrights protect the Health and Care Information Models and these rights are owned by the cooperating parties.

The user may copy, distribute and pass on the information in this Health and Care Information Model under the conditions that apply for Creative Commons license Attribution-NonCommercial-ShareAlike 3.0 Netherlands (CC BY-NC-SA-3.0).

The content is available under Creative Commons Attribution-NonCommercial-ShareAlike 3.0 (see also <http://creativecommons.org/licenses/by-nc-sa/3.0/nl/>)

This does not apply to information from third parties that sometimes is used and / or referred to in a Health and Care Information Model, for example to an international medical terminology system. Any (copyright) rights that protect this information are not owned by the cooperating parties but by those third parties.

Nictiz is the independent national competence centre for electronic exchange of health and care information. The activities of Nictiz include the targeted development and management of information standards at the request of and in partnership with the stakeholders in healthcare. Nictiz advises these parties on all aspects of information exchange and identifies (future) national and international developments.

**Nictiz**

P.O. Box 19121  
2500 CC Den Haag  
Oude Middenweg 55  
2491 AC Den Haag

070-3173450  
[info@nictiz.nl](mailto:info@nictiz.nl)  
[www.nictiz.nl](http://www.nictiz.nl)



